



34 Dorrit Crescent, Guildford, Surrey. GU3 3AP

- Well Presented
- Four Bedrooms
- Fitted Kitchen
- Lounge/Diner
- Double Glazed
- Enclosed Rear Garden
- Garage and Driveway
- Must Be Seen
- Two Bathrooms
- Spacious Accommodation



PROPERTY DESCRIPTION

This well presented chalet bungalow comes to the market having undergone many improvements by the current vendor. The ground floor offers a lovely fitted kitchen, shower room, two bedrooms and lounge/diner whilst the first floor boasts two double bedrooms and bathroom. Further benefits include gas central heating, double glazing, parking, garage and enclosed rear garden. Local amenities are nearby as are bus routes but to fully appreciate the accommodation viewings are highly recommended.



ROOM DESCRIPTIONS

Ground Floor

Entrance Hall

Stairs to first floor, doors to;

Kitchen

Front aspect double glazed window, side aspect door, range of eye and base level units, space for appliances, part tiled walls, radiator.

Lounge/Diner

Rear aspect double glazed window and doors, radiator, side aspect double glazed window, feature fireplace.

Shower Room

Frosted double glazed window, shower unit, part tiled walls, low level w.c, wash hand basin over vanity unit, wall mounted heated towel rail.

Bedroom

Rear aspect double glazed window, radiator, built in wardrobes.

Bedroom

Front aspect double glazed window, radiator, built in storage.

First Floor

Landing

Doors to:

Bedroom

Rear aspect double glazed window, radiator, velux style window, fitted storage, radiator.

Bedroom

Rear aspect double glazed window, velux style window, radiator, fitted storage.

Outside

Garden

Well maintained, patio area with the remainder laid to lawn, panel fencing, driveway allowing off road parking.

Garage

Double doors, power and light.

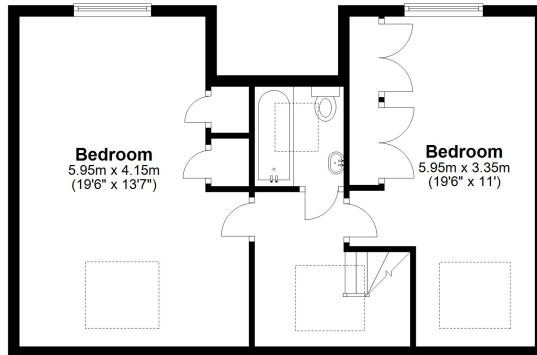


FLOORPLAN



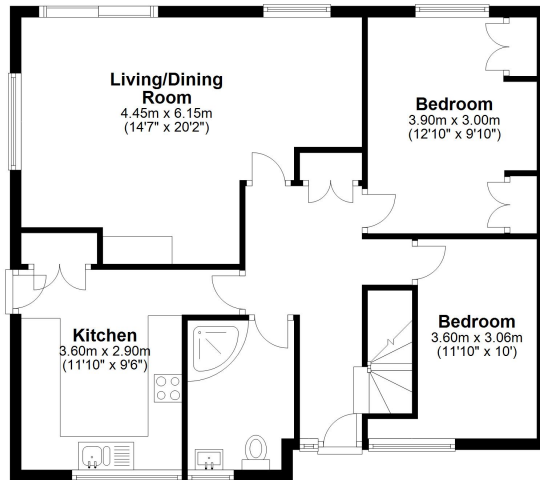
First Floor

Approx. 51.7 sq. metres (556.0 sq. feet)



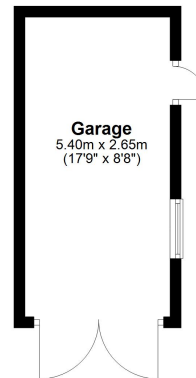
Ground Floor

Approx. 72.8 sq. metres (783.4 sq. feet)



Garage

Approx. 14.3 sq. metres (154.0 sq. feet)



Total area: approx. 138.7 sq. metres (1493.5 sq. feet)