



Tower Close, Little Wymondley, Hitchin, Hertfordshire, SG4

£450,000

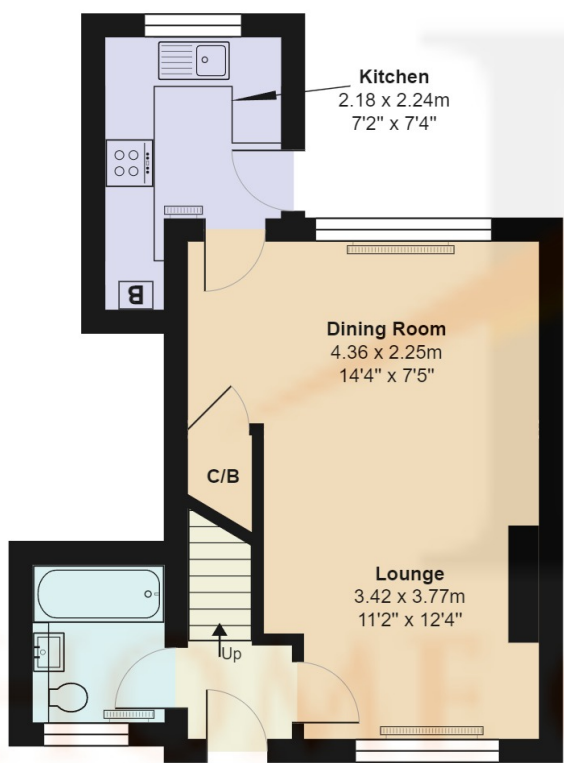
- **TWO DOUBLE BEDROOMS**
- **SEPARATE KITCHEN**
- **WIDE PLOT**
- **GARDEN OUTBUILDING WITH GYM**
- **OPEN PLAN LOUNGE / DINER**
- **DOWNSTAIRS BATHROOM**
- **PLANNING PERMISSION FOR EXTENSION**
- **GOOD SCHOOL CATHMENT AREA**

Tower Close, Little Wymondley, Hitchin, Hertfordshire, . SG4

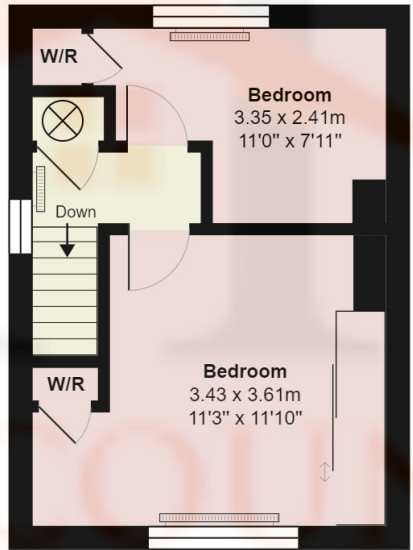
£450,000 Freehold

Situated in a quiet location in the popular village of Little Wymondley with good schools and commuter links nearby is this spacious two double bedroom home. The property benefits from a wide plot with off street parking, open plan lounge diner and separate kitchen to the rear, and downstairs family bathroom to the side. The first floor consists of two double bedrooms and externally there is a large garden to the rear with outbuilding currently used as a gym.

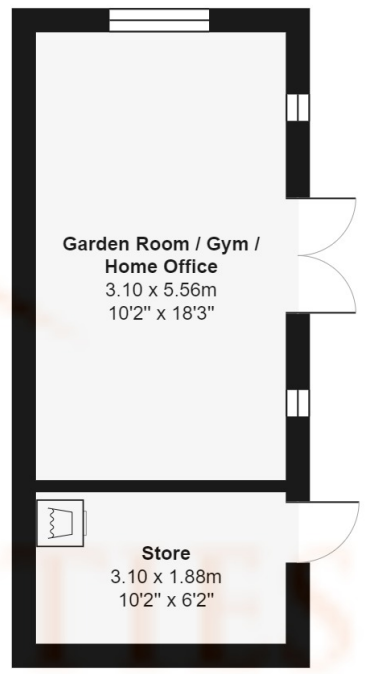
There is also the added benefit of planning permission for a double storey wrap around extension.



Ground Floor
Area: 37.1 m² ... 399 ft²



First Floor
Area: 27.1 m² ... 291 ft²



Outbuilding
Area: 23.6 m² ... 254 ft²

Tower Close, Hertfordshire SG4

Total Area: 87.7 m² ... 944 ft² Inc. Garden Building
All measurements are approximate and for display purposes only

