



## **Norman Court, Potters Bar, Hertfordshire, EN6 1HY**

**£399,950**

- **QUIET CUL-DE-SAC**
- **GOOD DECORATIVE ORDER THROUGHOUT**
- **MOMENTS FROM POTTERS BAR HIGH STREET**
- **WALKING DISTANCE TO POTTERS BAR MAINLINE STATION**
- **TWO BEDROOM GROUND FLOOR APARTMENT**
- **PRIVATE GARDEN**
- **BACKING DIRECTLY ONTO NATIONAL TRUST LAND**
- **LITTLE HEATH**

108, High Street, Potters Bar, EN6 5AT

01707 245 555

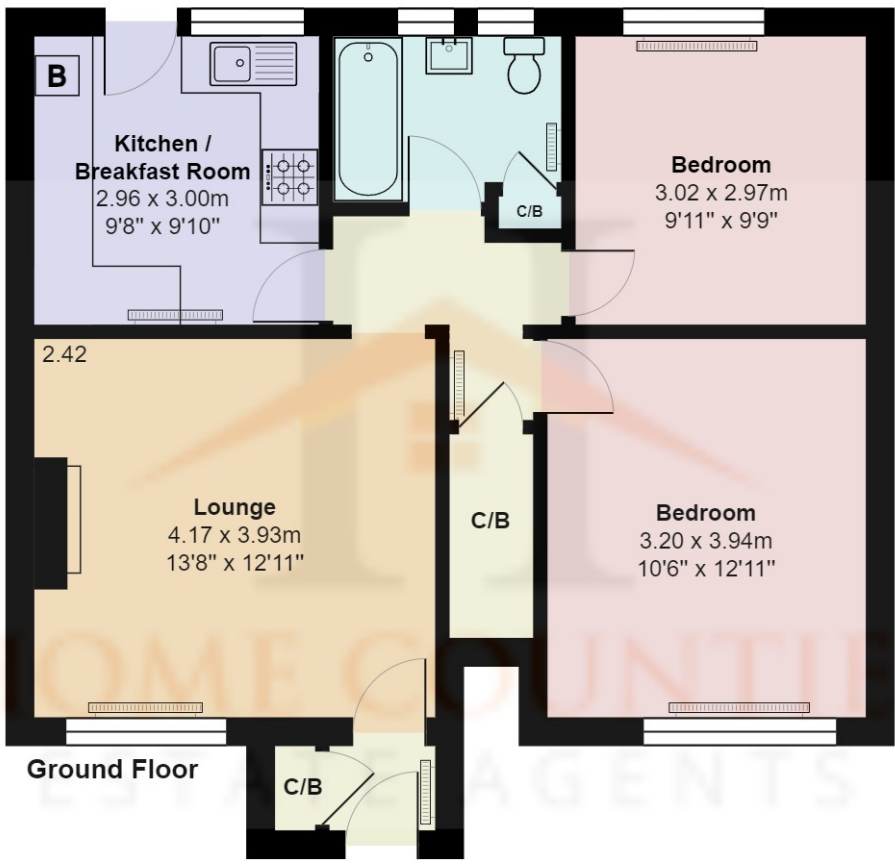
[www.home-counties.com](http://www.home-counties.com)

# Norman Court, Potters Bar, Hertfordshire, . EN6 1HY

## £399,950 Share of Freehold

This delightful ground floor two bedroom maisonette is ideally located on this quiet turning in Little Heath backing on to National Trust Open Fields. The home features lounge to front, master bedroom to front and second bedroom currently used as dining room / office to the rear, bathroom and kitchen with access to the garden.

The property is located just moments from Potters Bar high street with its array of shops and restaurants and is walking distance to Potters Bar Mainline Station and Darkes Lane. The home also falls within good school catchment area with Little Heath Primary School nearby.



## Norman Court, Hertfordshire EN6

Total Area: 62.2 m<sup>2</sup> ... 669 ft<sup>2</sup>  
 All measurements are approximate and for display purposes only



Energy Efficiency Rating		
	Current	Potential
Very energy efficient - lower running costs		
(92+) <b>A</b>		
(81-91) <b>B</b>		
(69-80) <b>C</b>	69	74
(55-68) <b>D</b>		
(39-54) <b>E</b>		
(21-38) <b>F</b>		
(1-20) <b>G</b>		
Not energy efficient - higher running costs		
England, Scotland & Wales	EU Directive 2002/91/EC	

