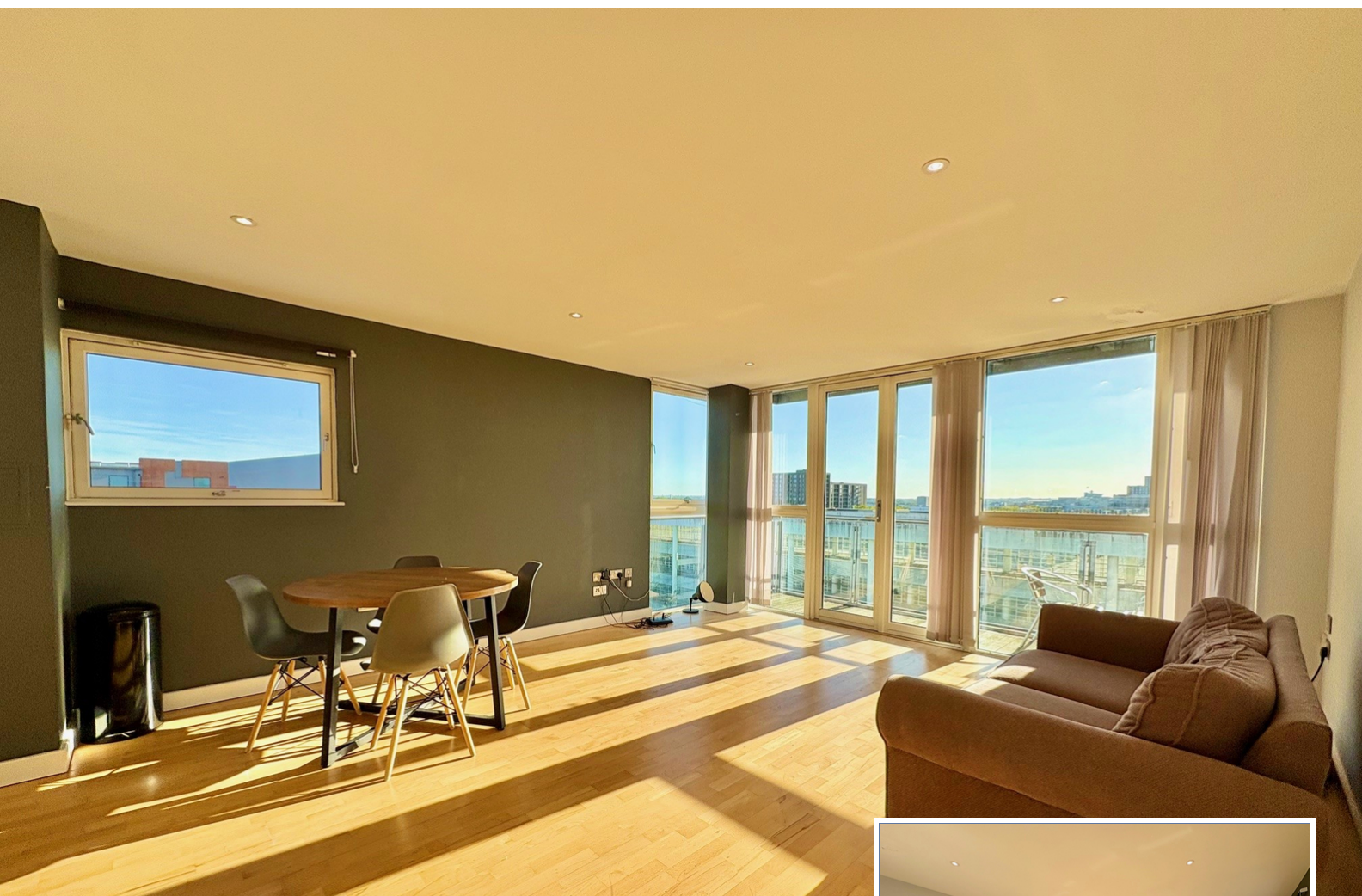




9 Whittle Court,
Knowlhill, Milton Keynes, MK5 8FT

Tel: 01908 231 551 
mail@elevationstateagents.com



**Flat 410, 475 Lower Twelfth Street, Milton
Keynes, Buckinghamshire, MK9 3PW**

£165,000 Leasehold

- Prime City Centre location with shops, restaurants, and amenities just steps away
- Excellent transport links – Central Milton Keynes Station only a short walk away
- Sixth-floor position in a sought-after development with far-reaching views
- Spacious double bedroom featuring built-in storage
- Open-plan kitchen, living, and dining area – ideal for modern living
- Service charge: £278.30 per month



See our full selection of properties online at www.elevationstateagents.com

- 106 years left on the lease
- EPC Rating



Perfectly located in the heart of the City Centre, this modern apartment is surrounded by an excellent choice of local amenities, all within easy walking distance—including shops, restaurants, and more. Central Milton Keynes Station is just a short stroll away, making it ideal for commuters. Positioned on the sixth floor of this highly sought-after development, the apartment boasts fantastic views. The accommodation includes a spacious double bedroom with built-in storage, a contemporary bathroom, and an open-plan kitchen/living/dining area designed for modern living.

£278.30 per month Service charge

£250 ground rent per year

106 years left on the lease

Disclaimer

Whilst we have endeavoured to prepare our sales particulars accurately none of the services, appliances or equipment have been tested. A buyer should satisfy themselves on such matters prior to purchase. Any measurements or distances mentioned in these particulars are for guide reference only. If such particulars are fundamental to a purchase, buyers should rely on their own enquiries. All enquiries should be directed to Elevation Estate Agents in the first instance.