



Solicitors & Estate Agents

16

The Heathers Wynd, Dunfermline, KY11 8YD



*Working harder for you*



3 bedrooms



1 public



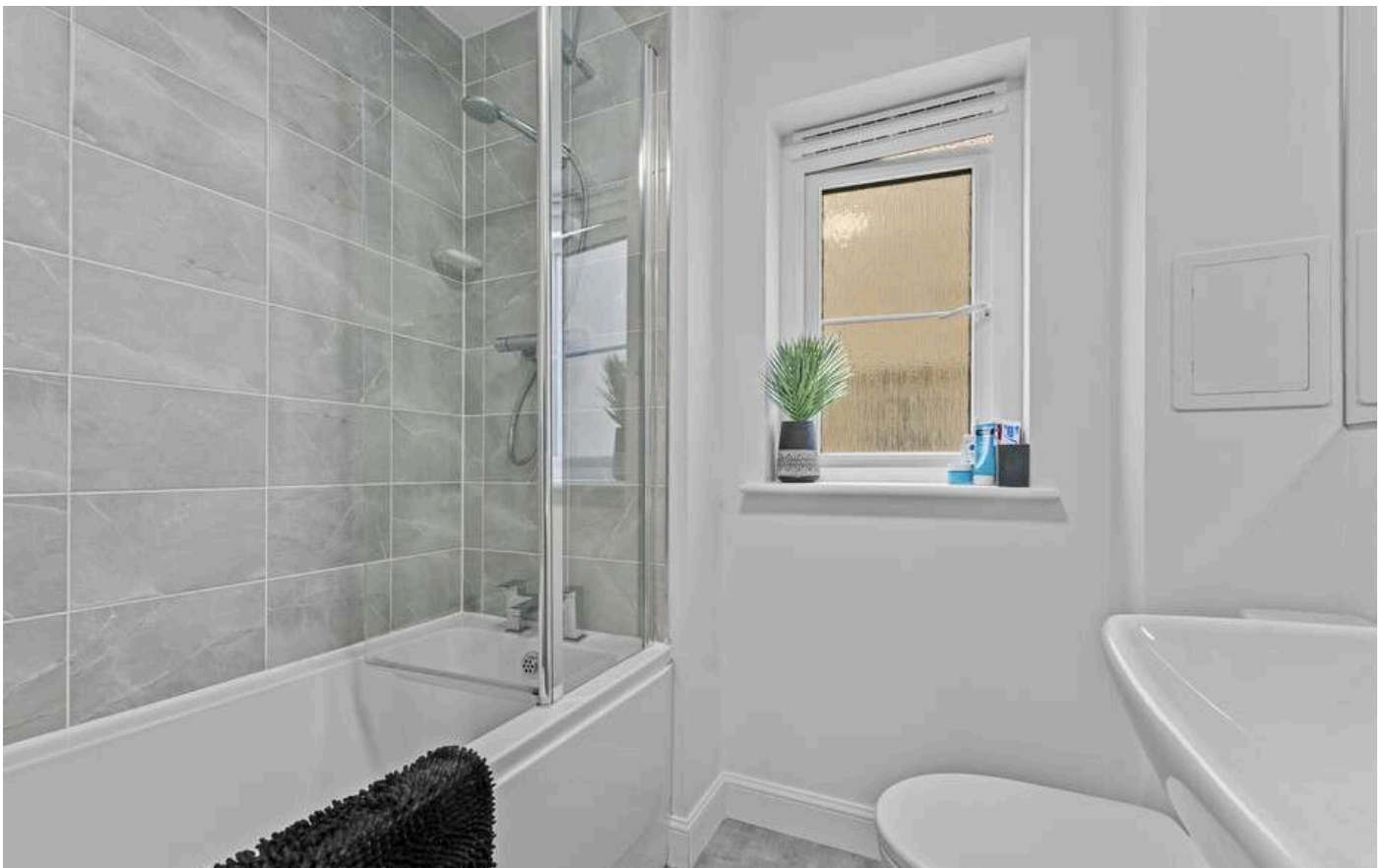
1 bathrooms



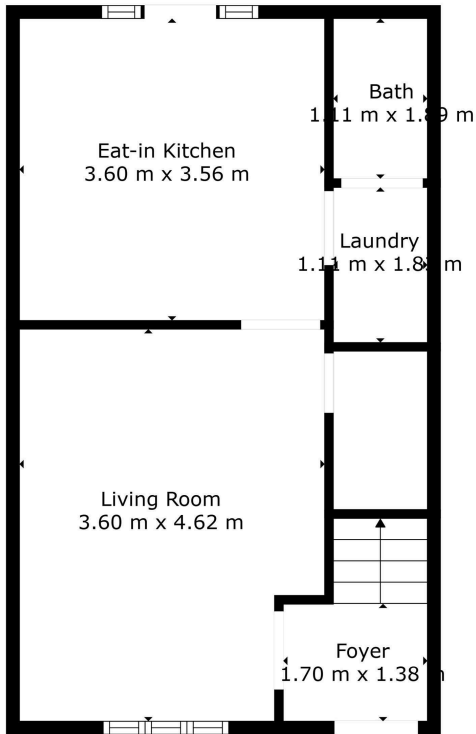
- + Modern, three-bedroom, End Terraced home set within a popular residential setting of similar properties
- + Offered to the market in move in condition
- + A fantastic location for amenities with a wide variety of amenities within walking distance, including various supermarkets, restaurants and leisure facilities
- + Fife Leisure Park offers various coffee shops, additional eateries, gym facilities and a ten-screen cinema
- + Walking distance of primary and secondary schooling
- + Several local train stations within Dunfermline, Rosyth and Inverkeithing, Park and Ride facilities to Edinburgh City Centre and Airport via Halbeath and circa 0.5 miles from access to the M90 motorway
- + Bright and spacious living room
- + Modern kitchen dining with ample floor and wall mounted storage, integrated appliances and space for dining table and chairs. Patio door leading out to private rear gardens
- + Downstairs WC and Utility
- + Two double bedrooms, with built in mirrored wardrobe in bedroom one
- + Viewing comes highly recommended to appreciate this modern home



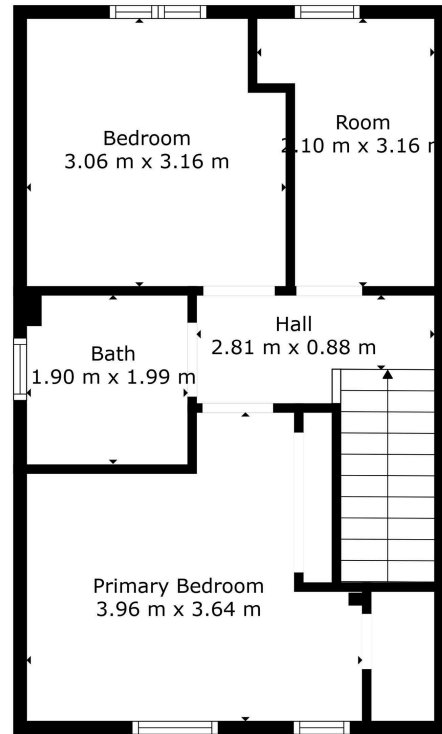








Floor 1



Floor 2



Floor Plan Created By Cubicasa App. Measurements Deemed Highly Reliable But Not Guaranteed.



Living Room	3.60 m x 4.62 m / 11'10" x 15'2"	Utility Room	1.11 m x 1.89 m / 3'8" x 6'2"
Kitchen Dining Room	3.60 m x 3.56 m / 11'10" x 11'8"	Bathroom	1.90 m x 1.99 m / 6'3" x 6'6"
Bedroom 1	3.96 m x 3.60 m / 13'0" x 11'10"	WC	1.11 m x 1.89 m / 3'8" x 6'2"
Bedroom 2	3.06 m x 3.16 m / 10'0" x 10'4"		
Bedroom 3	2.00 m x 3.16 m / 6'7" x 10'4"		



Sharing is caring!

6/8 Bonnar Street,  
Dunfermline KY12 7JR

T: 01383 629720 F: 01383 621333, DX DF69



W: [maloco.co.uk](http://maloco.co.uk)