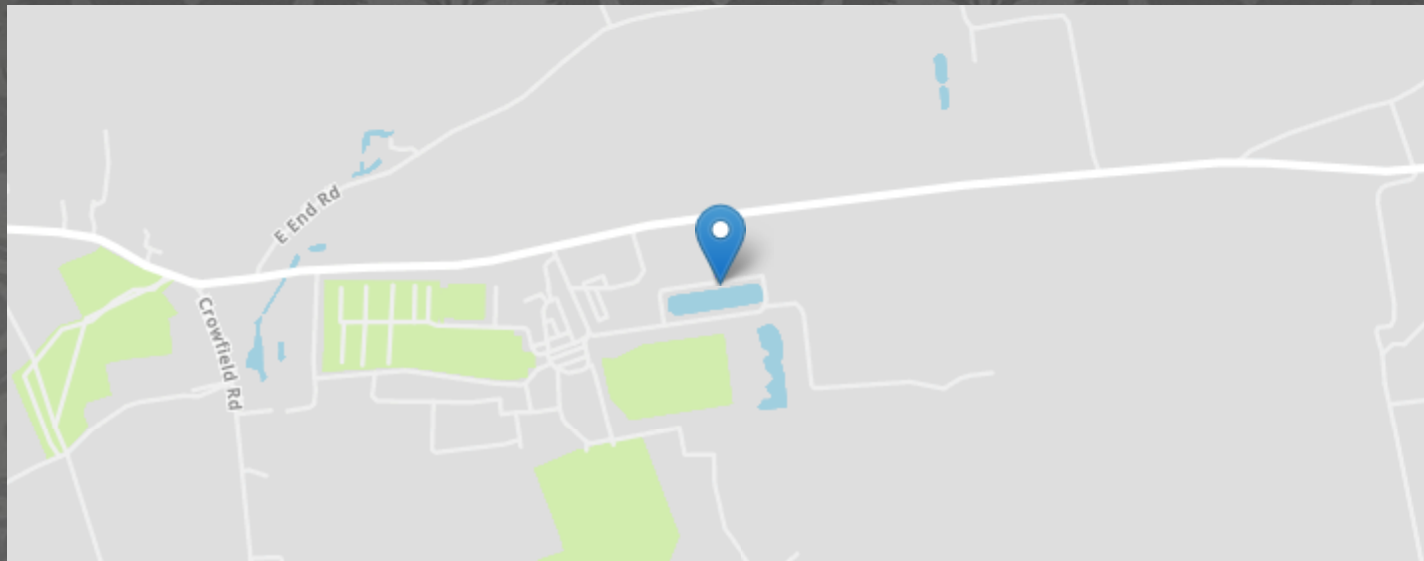


Pettaugh Road, Stonham Aspal, Stowmarket



- PREMIUM, FULLY FURNISHED 2023 MODEL
- CONTEMPORARY LOUNGE WITH TWO FREESTANDING SOFAS
- FAMILY SHOWER ROOM AND ADDITIONAL WC
- LUXURY KITCHEN WITH ADDED EXTRAS INCLUDING DISHWASHER AND WASHING MACHINE
- 2 BEDROOMS / 6 BERTH
- MASTER BEDROOM WITH FEATURE HEADBOARD AND AMPLE STORAGE
- 2025 GROUND RENT INCLUDED

MARKS & MANN

8 Needham Rd, Stowmarket, Suffolk, IP14 2AW.

01449 867 590

contactstowmarket@marksandmann.co.uk

Website www.marksandmann.co.uk

MARKS & MANN



Pettaugh Road, Stonham Aspal, Stowmarket

The Willerby Gainsborough perfectly blends modern design with everyday comfort, offering a bright open-plan layout and stylish interiors throughout. The spacious lounge features two freestanding sofas, large windows and elegant décor, creating the ideal space to relax or entertain. At its heart sits a stunning contemporary kitchen, finished with deep navy cabinetry, gold accents, and marble-effect worktops. Fully equipped with a dishwasher, washing machine, fridge freezer, oven, and microwave, it's both beautiful and practical. The primary bedroom delivers boutique hotel-style luxury with an en-suite and dressing area, while the twin bedroom provides a calm, comfortable retreat for family or guests.

Book your viewing with us direct!

£59,995 Guide Price

Pettaugh Road, Stonham Aspal, Stowmarket

Living Room

A welcoming and stylish space featuring two plush sofas, neutral tones, and large windows that flood the room with natural light. The open layout creates the perfect setting for relaxing with family or entertaining guests, while the contemporary finishes add a touch of understated luxury.

Kitchen

The Gainsborough’s standout feature — a bold, modern kitchen with deep navy cabinetry, gold accents, and wood-effect detailing. This model comes fully furnished with added extras including dishwasher and washing machine, this is a space designed for both everyday ease and impressive entertaining.

Dining Area

Blending seamlessly with the kitchen, the dining area features a contemporary wood table and upholstered chairs. Whether it’s a leisurely breakfast or a dinner with friends, this comfortable and inviting space makes every mealtime special.

Primary bedroom

The beautifully designed primary bedroom offers a calming retreat, complete with a feature panelled headboard, built-in wardrobes, and a cosy dressing area. Soft tones with bold accents create a boutique feel, while large windows allow natural light to flow through. The en-suite includes a vanity basin and WC, finished with stylish shelving and warm wood detailing — combining comfort and practicality in one elegant space.

Second Bedroom

Ideal for family or guests, the second bedroom mirrors the Gainsborough’s modern style with twin beds, clever storage, and matching décor in soothing blue and yellow tones. Bright, airy, and comfortable — it’s a space everyone will love.

Shower Room

Elegant and practical, the main bathroom includes a walk-in shower, contemporary vanity unit, heated towel rail, and a clean modern finish throughout. Designed with both comfort and functionality in mind. Double glazed frosted window.

Outside

This lodge offers two off road parking spaces and can be placed on any available plot within the park.

Important Information

Tenure – Commonhold
The lodge can be used for 11 months per year.
Services – We understand that calor gas, electricity, water and drainage are connected to the property.
Yearly costs - £4,800 2025 PAID

Location

Discover a relaxed and vibrant way of life at Stonham Barns Park — a place where peaceful countryside living meets year-round leisure and community spirit. Set in the heart of Suffolk, this beautiful holiday park offers something for everyone, from tranquil walks and lakeside views to lively entertainment, boutique shopping, and family-friendly activities.

Owners enjoy the freedom of an 11-month holiday season, making it the perfect retreat for long weekends, extended stays, or a second home escape. With an on-site golf course, fishing lakes, restaurants, shops, and regular events including festivals and markets, every visit feels like a holiday.

Whether you’re unwinding on your private decking, meeting friends at the clubhouse, or exploring the picturesque local villages, Stonham Barns Park offers the perfect blend of comfort, convenience, and countryside charm — a lifestyle you’ll love coming back to, time and time again.

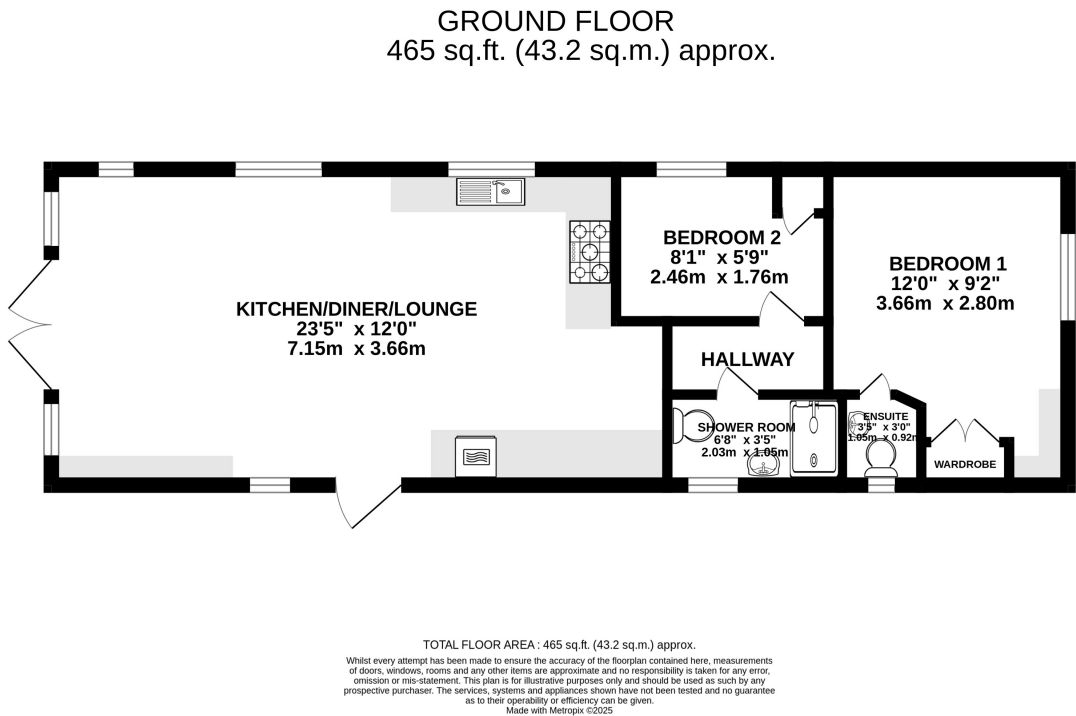
Pettaugh Road, Stonham Aspal, Stowmarket

Disclaimer

In accordance with Consumer Protection from Unfair Trading Regulations, Marks and Mann Estate Agents have prepared these sales particulars as a general guide only. Reasonable endeavours have been made to ensure that the information given in these particulars is materially correct but any intending purchaser should satisfy themselves by inspection, searches, enquiries and survey as to the correctness of each statement. No statement in these particulars is to be relied upon as a statement or representation of fact. Any areas, measurements or distances are only approximate. New build properties - the developer may reserve the right to make any alterations up until exchange of contracts.

Anti Money Laundering Regulations

Intending purchasers will be asked to produce identification documentation at a later stage and we would ask for your co-operation in order that there will be no delay in agreeing the sale.



The above floor plans are not to scale and are shown for indication purposes only.

