



GREGORY BROWN
RESIDENTIAL SALES & LETTINGS

£272,500 Leasehold
FOR SALE



Riverside Place, Stanwell, Staines-upon-Thames, Surrey, TW19 7LP

STUNNING ONE BEDROOM PROPERTY SITUATED AT THE REAR OF THIS SOUGHT AFTER CUL-DE-SAC IDEALLY POSITIONED FOR EASY ACCESS TO BOTH STAINES & ASHFORD TOWN CENTRES, LOCAL MOTORWAY NETWORKS & HEATHROW AIRPORT. The property is in great condition throughout and benefits from a spacious lounge/diner open to luxury fitted kitchen, large double bedroom with fitted wardrobes, modern white bathroom suite, allocated parking and garden. Viewings Highly Recommended!

Gregory Brown

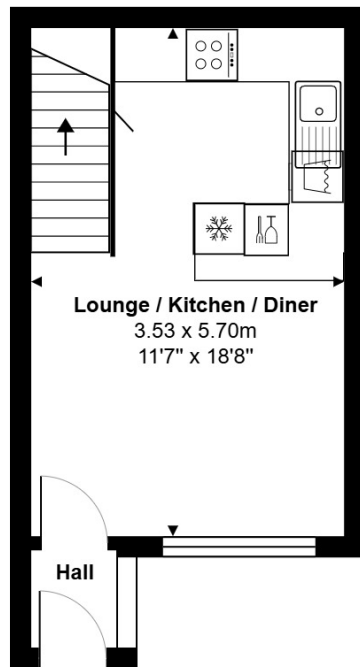
127a, High Street, Staines-upon-Thames, TW18 4PD

01784 451458

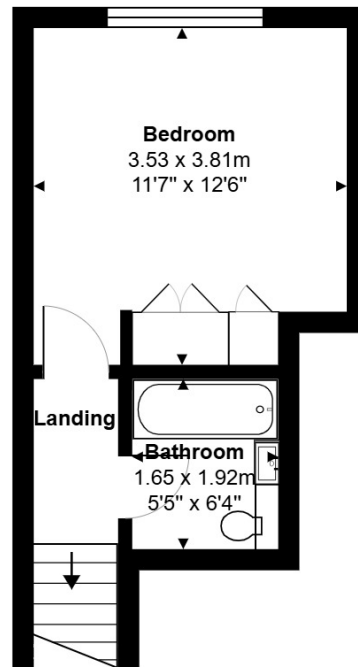
staines@gregory-brown.co.uk

ROOM DESCRIPTIONS

FLOORPLAN



Ground Floor



First Floor

Total Area: 41.3 m² ... 444 ft²

All measurements are approximate and for display purposes only.