



Offers in Region of £245,000
1 The Beeches, Lochgelly, Fife, KY5 9QB

1 The Beeches, Lochgelly, Fife, KY5 9QB

Delmor are delighted to be marketing this rarely available spacious detached family villa set on a large corner plot located in a private residential estate. Lochgelly has a good range of amenities including shopping, schooling and a golf course. There is a train station and close links to the A92 for the commuter. The accommodation briefly comprises of on the ground floor - Entrance door through to the vestibule area with door leading into the welcoming hallway with stairs leading to the first floor. Downstairs toilet comprising of wash hand basin and WC. French doors through to the spacious lounge. Modern dining kitchen with floor and wall mounted units incorporating gas hob with electric oven below. American style fridge/freezer and washing machine. Ample space for dining table and chairs. Patio doors to the rear gardens. Double bedroom. First floor has top hallway. Master bedroom is a double with fitted wardrobes. Modern en suite comprising of corner jet shower cubicle, wash hand basin and WC. Spacious double bedroom with walk in storage cupboard. There are two further double bedrooms. Modern bathroom with roll top bath, WC and vanity unit housing the wash hand basin. The property sits on a large corner plot with mature expansive gardens to side and rear which are mostly laid to lawn with mature plants and shrubs. There are also decked and slabbed patio areas. Summer house. Mono block driveway leading to the garage. The property also benefits from gas central heating, double glazing and oak doors throughout. Viewing is highly recommended to fully appreciate the space and layout on offer within.

Ground Floor

Entrance Vestibule



Hallway



Downstairs Toilet



1.43m x 1.09m (4' 8" x 3' 7")

Lounge



5.21m x 3.53m (17' 1" x 11' 7")

Dining Kitchen



7.23m x 2.71m (23' 9" x 8' 11")

Bedroom



3.57m x 2.79m (11' 9" x 9' 2")

First Floor

Top Hallway



Master Bedroom



3.66m x 2.81m (12' 0" x 9' 3")

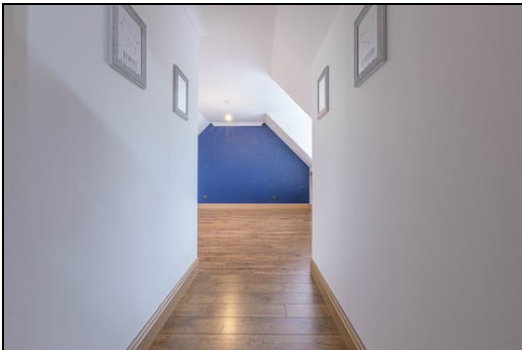


En Suite

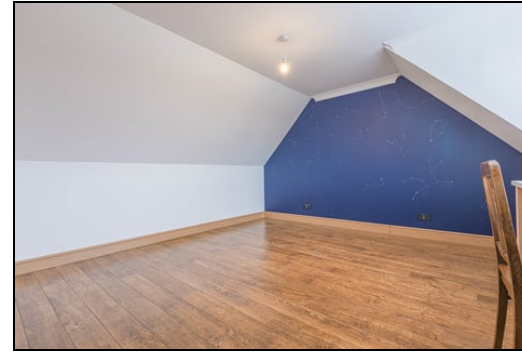


2.18m x 2.14m (7' 2" x 7' 0")

Bedroom



4.25m x 4.04m (13' 11" x 13' 3")



Bedroom



4.2m x 2.75m (13' 9" x 9' 0")





Bedroom



2.99m x 2.34m (9' 10" x 7' 8")



Bathroom



2.75m x 1.75m (9' 0" x 5' 9")





Gardens



Extras

All floor coverings. Gas hob and electric oven. American style fridge/freezer and washing machine. Summerhouse.

SONIC TAPE

All measurements have been taken using a sonic tape measure and therefore, may be subject to a small margin of error.





MEASUREMENTS

All measurements are approximate.

APPLIANCES/SERVICES

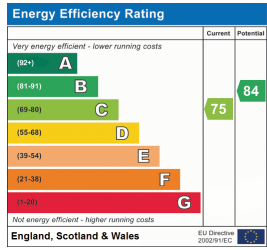
The mention of any appliances and/or services within these Sales Particulars does not imply they are in fully working order.

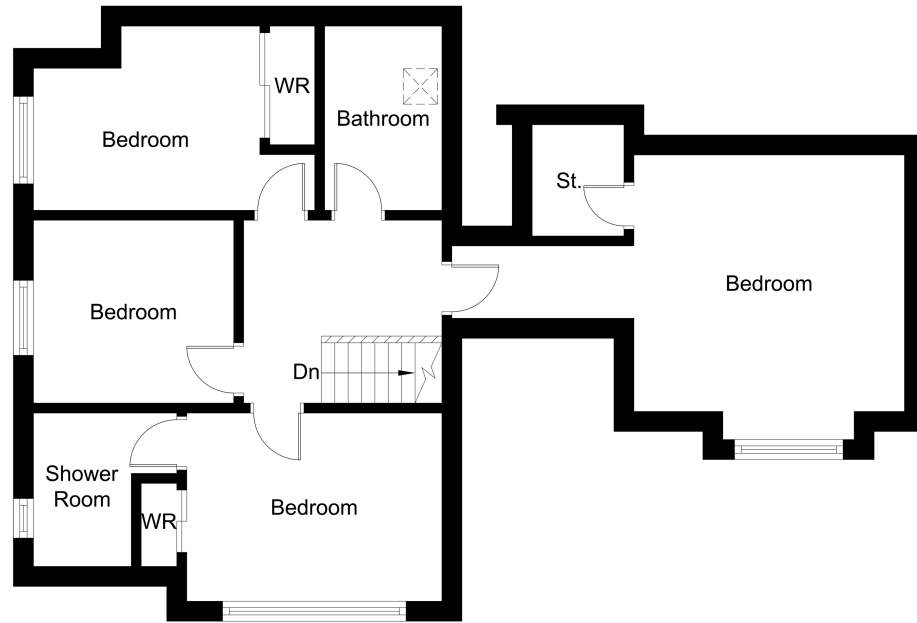
MORTGAGE & FINANCIAL ADVICE

Qualified Mortgage and Financial Consultants can provide you with up to the minute information on many of the rates available. To arrange an appointment telephone this office. YOUR HOME IS AT RISK IF YOU DO NOT KEEP UP REPAYMENTS ON A MORTGAGE OR OTHER LOANS SECURED ON IT. Full written quotation available on request. A suitable life policy may be required. Loans are subject to status. Minimum age 18.

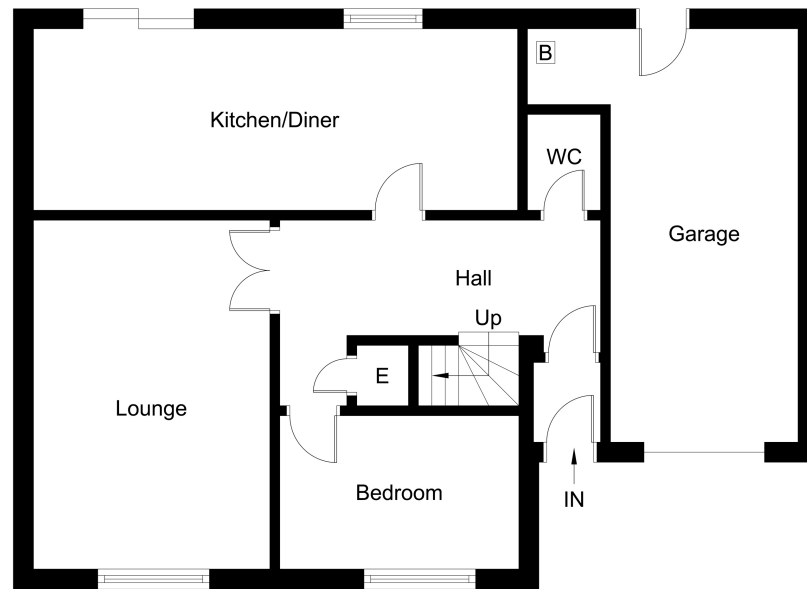
FREE VALUATION

How much is your property worth?. We can provide you with the answer. We offer a free valuation service without cost or obligation. Please call this office for an appointment.





First Floor



Ground Floor