

The logo for 'chill' is displayed in white lowercase letters on a dark blue background. The letter 'i' is stylized with a blue dot and a blue vertical line.

£325,000

St. Michaels place , 3FT

Flat 1 Bedrooms 1 Bathrooms

Share of Freehold



A superb two double period apartment presented in excellent condition throughout whilst being located on a beautiful street in central Brighton.

- Two double bedrooms
- Prime central Brighton road, quiet & pretty yet close to everything!
- Long lease over 900 years
- Excellent condition throughout
- Well maintained building
- Being sold with no onward chain
- Recently fitted kitchen
- Large bay with sash windows



Russell Chilvers

01273 569 233

Russell@chillhomes.co.uk

3/48 Rochester House,
Rochester Gardens,
Hove, BN3 3AW





Russell Chilvers

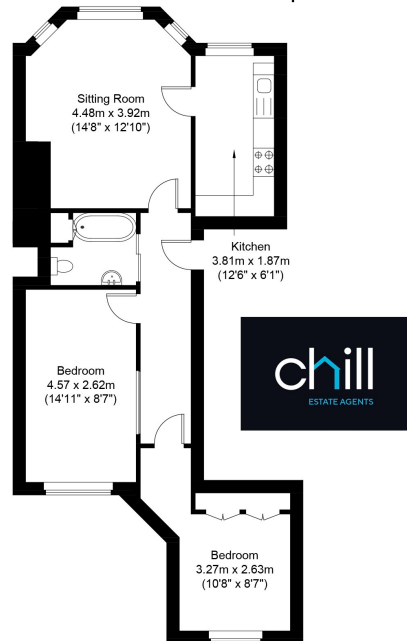
01273 569 233

Russell@chillhomes.co.uk

3/48 Rochester House,
Rochester Gardens,
Hove, BN3 3AW



Approximate Gross Internal Area = 57.98 sq m / 624.09 sq ft

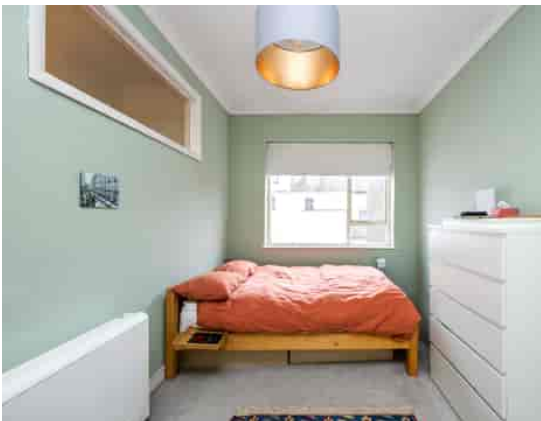


St Michaels Place



Second Floor
Approximate Floor Area
624.09 sq ft (57.98 sq m)

Illustration for identification purposed only, measurements are approximate, not to scale.
© Mansell McTaggart



Russell Chilvers



01273 569 233



Russell@chillhomes.co.uk

3/48 Rochester House,
Rochester Gardens,
Hove, BN3 3AW

