



22 Cushag, Victoria Terrace, Douglas, Isle of Man. IM2 4EX

Impressive detached true bungalow within a quiet location offered with no onward chain. The property has recently had a complete re-model including superb open plan kitchen/lounge/diner, two new bathrooms and re-decoration.



£420,000 Freehold

PROPERTY DESCRIPTION

Discover the charm and convenience of this impressive detached true bungalow, perfectly situated in a quiet residential location in Douglas. This delightful home offers spacious and comfortable living arrangements, making it an ideal choice for families, retirees, or anyone seeking a peaceful retreat with excellent local amenities close by. With no onward chain, this property provides a hassle-free purchase for those eager to move into their new home without delay.

Step inside to experience the superb open plan kitchen/lounge/diner, a fantastic space designed to enhance modern living. The large, airy lounge offers a welcoming atmosphere, perfect for relaxing with family or entertaining friends. The kitchen is well-equipped and stylishly finished with centre island that can accommodate family meals or casual gatherings, ensuring this hub of the home is both functional and inviting.

The bungalow features three generous double bedrooms, providing ample space for everyone. The master bedroom boasts a private ultra modern en suite bathroom. Additionally, there is a well-appointed shower room that serves the remaining bedrooms and guests, ensuring convenience and comfort for all residents and visitors alike.

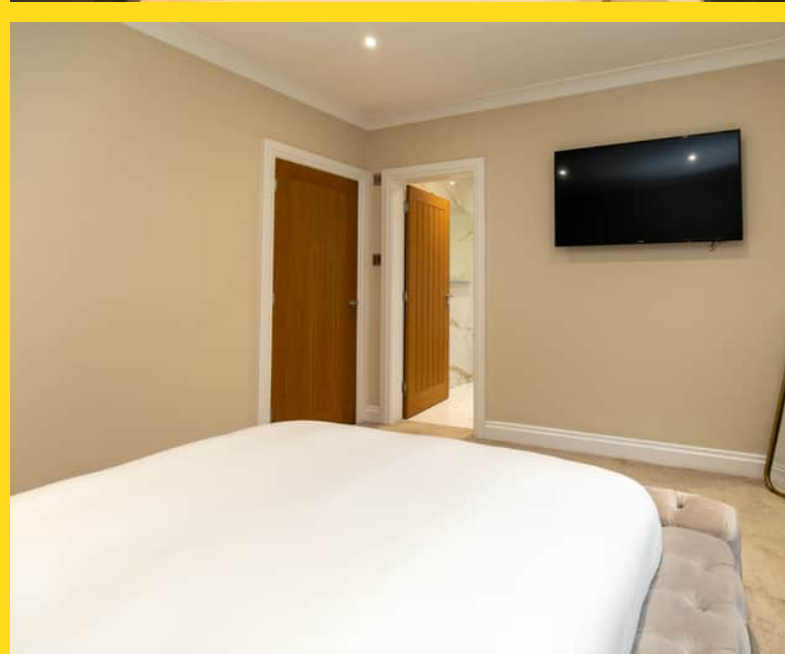
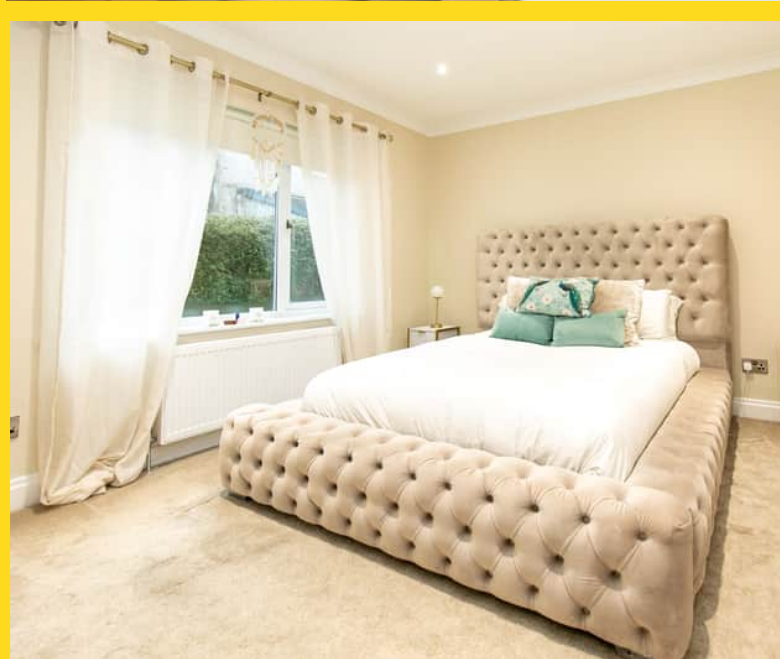
One of the standout features of this property is the large private rear garden. The garden offers a blank canvas for gardening enthusiasts, space for children to play safely, or a wonderful spot for summer entertaining. Its size and privacy make it a rare find in the area, ideal for those who appreciate outdoor living and tranquility.

FEATURES

- Impressive Detached True Bungalow
- Quiet Residential Location in Douglas
- Superb Open Plan Lounge/Kitchen/Diner
- 3 Double Bedrooms (1 En Suite) plus Shower Room
- Large Private Rear Garden
- No Onward Chain

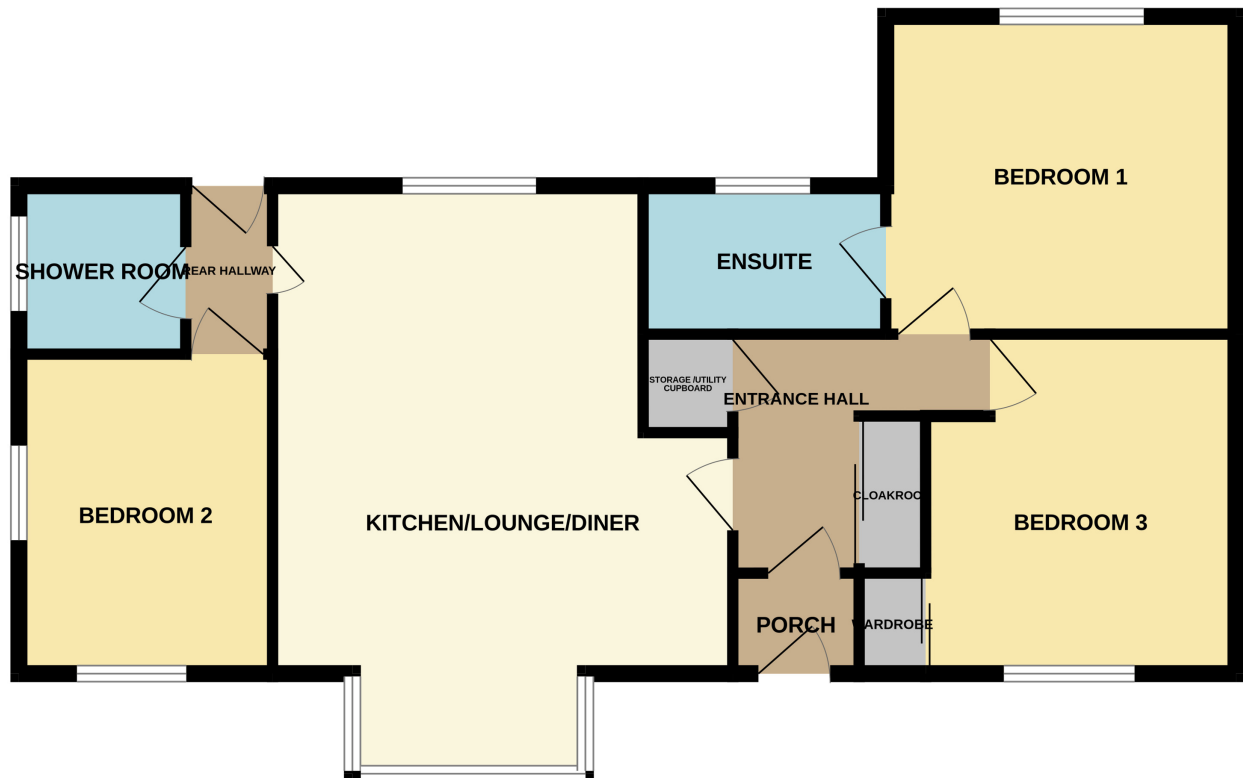


Property Images



FLOORPLAN

GROUND FLOOR



Whilst every attempt has been made to ensure the accuracy of the floorplan contained here, measurements of doors, windows, rooms and any other items are approximate and no responsibility is taken for any error, omission or mis-statement. This plan is for illustrative purposes only and should be used as such by any prospective purchaser. The services, systems and appliances shown have not been tested and no guarantee as to their operability or efficiency can be given.
Made with Metropix ©2026

DISCLAIMER: Whilst Manxmove Ltd believe that these details are correct, neither Manxmove Ltd or their clients guarantee their accuracy in any way. Consequently, these details are not to be used to form part of any legally binding contract. Prospective purchasers or tenants are advised to visit this property to satisfy themselves as to the correctness of these details. Please note, we use wide angle camera lenses in order to show as much of each room as possible. This is not intended to mislead any prospective purchasers or tenants in any way and an honest verbal description is always available prior to viewing if required.