



Pinfold Close, Ainsdale,
PR8 3QQ

OFFERS OVER
£280,000

SM

STEPHANIE MACNAB
ESTATE AGENT

Immaculate Three-Bedroom Bungalow in Sought-After Ainsdale Location

Tucked away in a peaceful CUL-DE-SAC just a short stroll from Ainsdale PINEWOODS and BEACH, this beautifully presented semi-detached BUNAGLOW has been thoughtfully enhanced by the current owner to offer stylish, low-maintenance living in a SEMI-RURAL SETTING.

The spacious layout extends to over 1,070 sq. ft. and includes THREE BEDROOMS, a generous LOUNGE with feature fireplace, and a bright, modern KITCHEN with open-plan DINING AREA — perfect for relaxed everyday living. The kitchen has been updated with sleek units, integrated appliances, and an abundance of natural light through dual aspect windows and PLANTATION SHUTTERS.

To the rear, a DELIGHTFUL GARDEN provides a private retreat, complete with patio seating, manicured lawn, mature planting, and access to a detached garage. The rear extension, which benefits from a newly installed flat roof (c. 2023), currently serves as an additional sitting room or optional third bedroom, with French doors opening directly onto the garden.

Further highlights include:

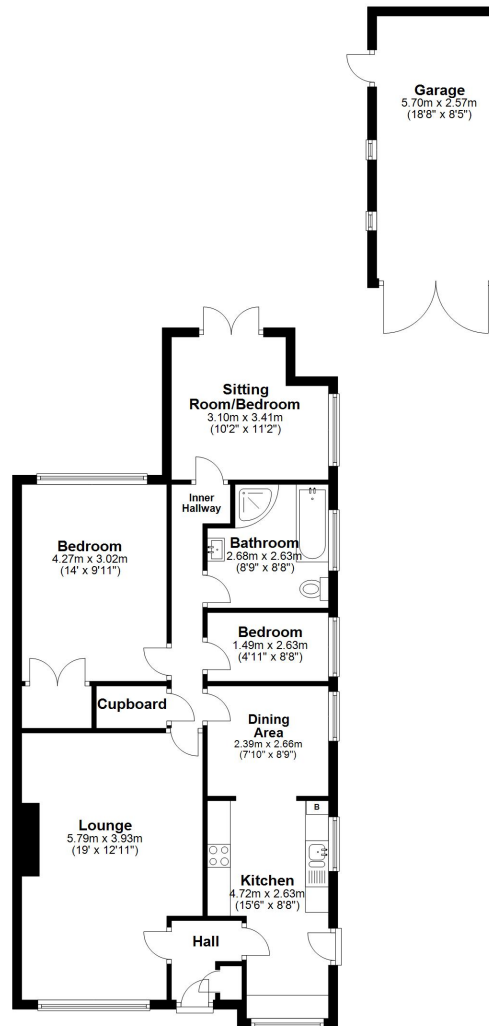
- Overhauled main roof and full repointing
- Internal redecoration (2024)
- New fire installed in 2024
- Blackout blinds and plantation shutters included in the sale
- Modern four-piece bathroom with separate shower and bath
- Boarded loft and useful storage cupboard off the hallway
- Driveway parking and detached garage

Located just moments from vibrant Ainsdale village, which offers independent shops, cafes, and rail links to Southport and Liverpool, this home is ideal for downsizers, professionals, or anyone seeking a turn-key coastal lifestyle.





Ground Floor
Approx. 99.4 sq. metres (1070.3 sq. feet)



Total area: approx. 99.4 sq. metres (1070.3 sq. feet)

Plan produced using PlanUp.

