

16 Woodfield Close

Folkestone
CT19 4LW

£300,000 FREEHOLD

DRAFT DETAILS... FOR SALE WITH BURNAP + ABEL... Burnap + Abel are delighted to offer this three bedroom semi-detached house situated at the end of a quiet cul-de-sac in Cheriton. The property has been recently upgraded by the current vendors and the accommodation comprises lounge, kitchen, large conservatory (currently used as a dining room), three bedrooms and family bathroom. Additional benefits include off road parking for multiple vehicles, a very large rear garden and no onward chain. For your chance to view call sole agent Burnap + Abel now on 01303 258590.



Entrance

Lounge

15' 1" x 14' 6" (4.60m x 4.42m)

Kitchen

15' 1" x 9' 9" (4.60m x 2.97m)

Conservatory

12' 2" x 10' 10" (3.71m x 3.30m)

First Floor Landing

Bedroom One

11' 7" x 9' 1" (3.53m x 2.77m)

Bedroom Two

13' 0" x 7' 10" (3.96m x 2.39m)

Bedroom Three

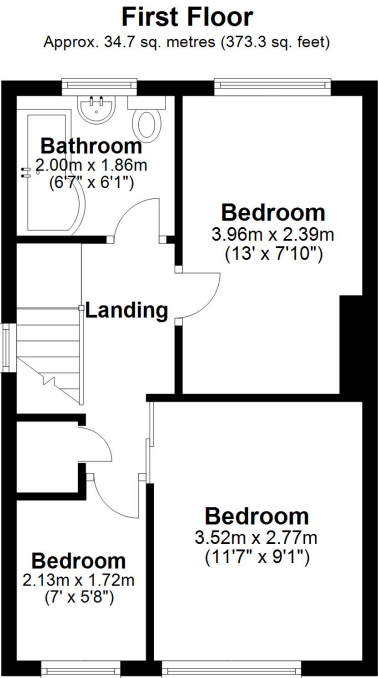
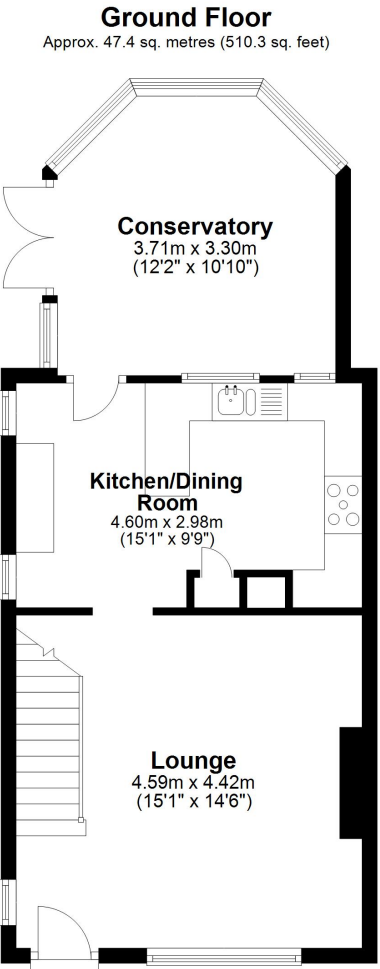
7' 0" x 5' 8" (2.13m x 1.73m)

Bathroom

6' 7" x 6' 1" (2.01m x 1.85m)

Off Road Parking

Rear Garden



Whilst every attempt has been made to ensure the accuracy of the floor plan contained here, measurements of doors, windows, rooms and any other items are approximate and no responsibility is taken for any error, omission or mis-statement. This plan is for illustrative purposes only and should be used as such by any prospective purchaser.
Plan produced using PlanUp.

