



17 Magpie Close, Bexhill-on-Sea, East Sussex,
TN39 4EU

£552,000

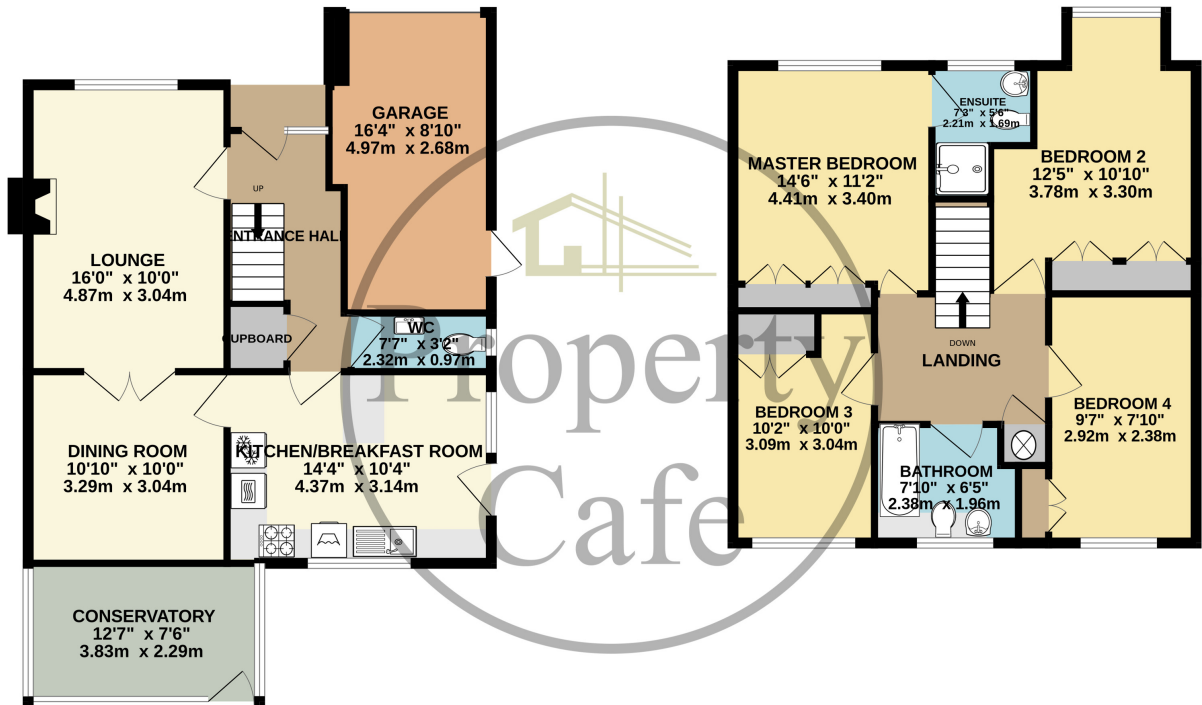


- Immaculate Four Bed Family Home
- Family Lounge With Central Log Burner
- Separate Dining Room & Conservatory
- Modern Fitted Kitchen-Diner
- Good Size Inner Entrance Hall
- Ground Floor Cloakroom / W.C
- Master Bedroom & En Suite Shower
- Modern Family Bathroom
- Four Good Size Family Bedrooms
- Central Heating & D.Glazed
- Integral Garage With Roller Door
- Off Road Parking For Three Cars
- Pleasant West Facing Rear Garden
- Sought After & Peaceful Location
- Close To Little Common Village



GROUND FLOOR
774 sq.ft. (71.9 sq.m.) approx.

1ST FLOOR
666 sq.ft. (61.9 sq.m.) approx.



TOTAL FLOOR AREA : 1441 sq.ft. (133.9 sq.m.) approx.

Whilst every attempt has been made to ensure the accuracy of the floorplan contained here, measurements of doors, windows, rooms and any other items are approximate and no responsibility is taken for any error, omission or mis-statement. This plan is for illustrative purposes only and should be used as such by any prospective purchaser. The services, systems and appliances shown have not been tested and no guarantee as to their operability or efficiency can be given.
Made with Metroplex ©2024

