



THE ESTATE AGENTS
1977



Holmfield Terrace, Long Buckby, Northampton NN6 7QN
Offers Over £280,000 - Freehold



PROPERTY DESCRIPTION

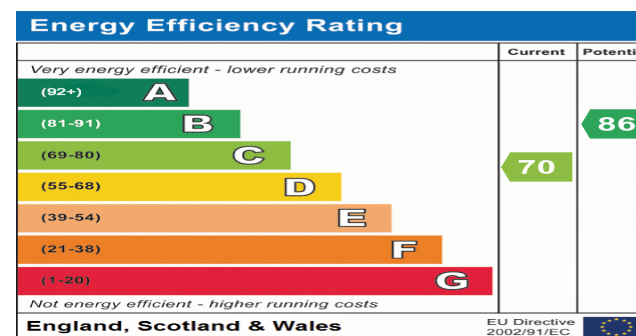
The Estate Agents are pleased to present a rare opportunity to purchase this beautiful Victorian property in the highly desirable and sought after village of Long Buckby. The accommodation briefly comprises; a welcoming entrance to an open plan living/dining space and cottage style kitchen with a large pantry.

On the first floor are two double bedrooms and a generous family bathroom. Set to the side and rear of the house lies an unusually large and beautifully established garden. A broad lawn provides open space, framed by mature hedging and thoughtfully designed planting schemes that bring colour and interest throughout the seasons. A decked pergola offers a shaded spot for seating and outdoor dining, while a charming wooden greenhouse stands nearby, complementing further borders and vegetable beds. A naturalised pond forms the heart of a wildlife-friendly area, attracting birds, insects, and amphibians. Blending structure with natural beauty, the garden balances productivity and tranquillity, creating a space that feels both welcoming and alive throughout the year. To the rear of the garden are two further outbuildings, one of which provides a generous space for a workshop, with potential for a home office or gym. The garden to the side of the property offers scope to extend (subject to planning) which is rare for this style of property and could provide a stunning living space opening onto the garden.

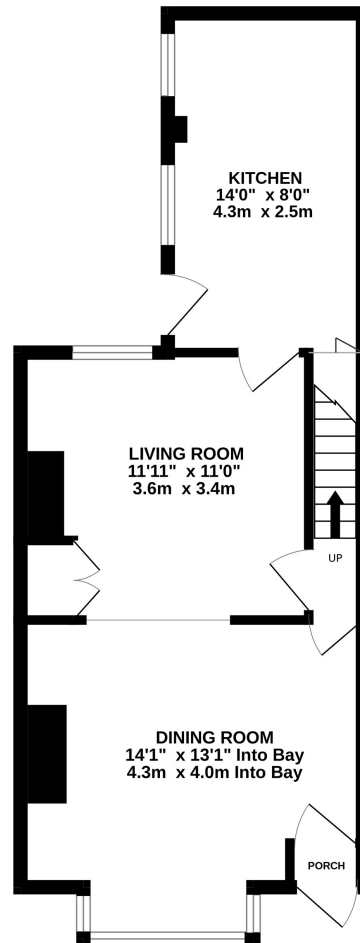
Long Buckby is a thriving local community with a choice of shops, pubs and eateries. There is a library, primary school, nurseries, dentist and doctors surgery and is located within the sought after Guilsborough School catchment area. Long Buckby Train Station has a regular direct service to London Euston, the fastest train taking around 1hr 10m and Birmingham New Street taking around 50 mins. and is within easy access to M1, M6, A14 and A5.

POINTS OF INTEREST

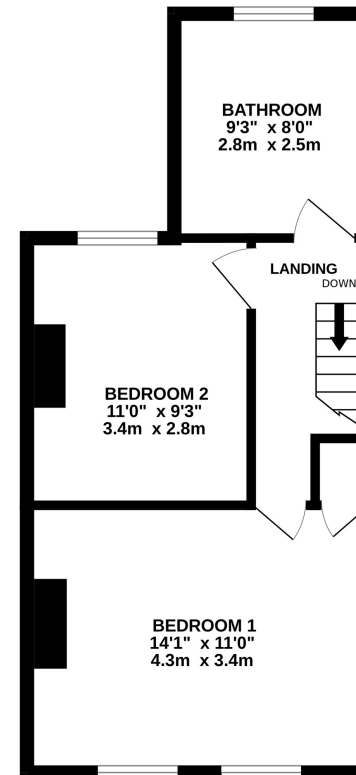
- Two Bedroom Victorian End Of Terrace
- Highly Desirable & Sought After Village
- Open Plan Living Space
- Retains Many Original Features
- Stunning Large Gardens To The Side And Rear
- Scope To Extend (Subject To Planning)
- Close To Local Amenities
- Within The Guilsborough School Catchment Area
- Regular Train Service To London Euston And Birmingham New Street
- Gas Central Heating & Fully Double Glazed



GROUND FLOOR
425 sq.ft. (39.5 sq.m.) approx.



1ST FLOOR
375 sq.ft. (34.9 sq.m.) approx.



TOTAL FLOOR AREA : 800 sq.ft. (74.4 sq.m.) approx.

Whilst every attempt has been made to ensure the accuracy of the floorplan contained here, measurements of doors, windows, rooms and any other items are approximate and no responsibility is taken for any error, omission or mis-statement. This plan is for illustrative purposes only and should be used as such by any prospective purchaser. The services, systems and appliances shown have not been tested and no guarantee as to their operability or efficiency can be given.
Made with Metropix ©2025