



GB



191 Feltham Hill Road, Ashford, Surrey TW15 1HJ
£630,000 - Freehold



PROPERTY DESCRIPTION

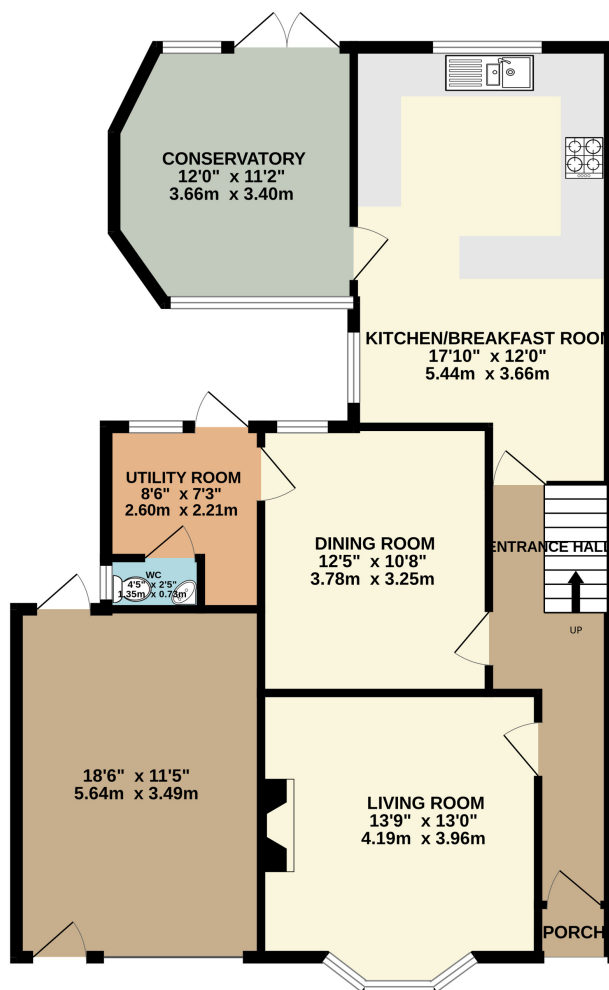
This charming period property offers generous and versatile family accommodation throughout, with plenty of character and space to enjoy. The ground floor features two well-proportioned reception rooms, an impressive 18' kitchen/breakfast room, a useful utility room, and a bright conservatory overlooking the garden. Upstairs, there are three double bedrooms and a family bathroom. Outside, the property boasts a beautifully sized rear garden measuring approximately 135' x 30', providing plenty of space for relaxation and outdoor entertaining. To the front, there is off-road parking and an oversized garage measuring 18.5' x 11.5'. Conveniently situated within walking distance of local shops, schools, and transport links, this home is perfectly located for family life. Offered to the market with no onward chain, early viewings are strongly recommended to avoid disappointment.

POINTS OF INTEREST

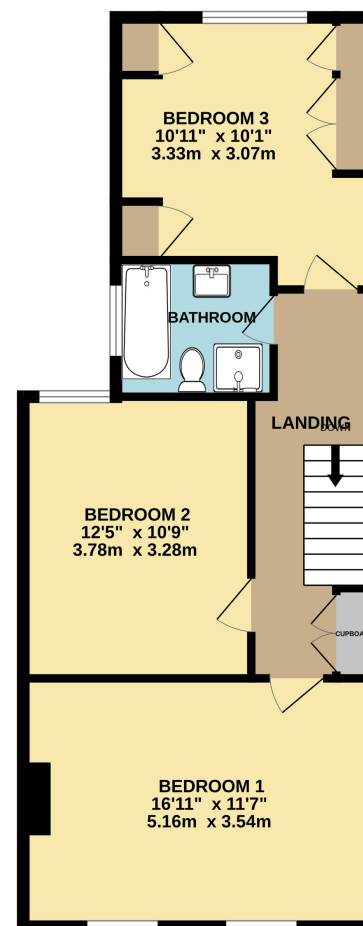
- Period character property
- Three double bedrooms
- Two spacious reception rooms
- 18' Kitchen Breakfast Room
- Conservatory overlooking the garden
- Rear garden measures 135' x 30'
- Off road parking and an oversized garage 18' x 11'
- Offered with no onward chain



GROUND FLOOR
994 sq.ft. (92.3 sq.m.) approx.



1ST FLOOR
615 sq.ft. (57.1 sq.m.) approx.



TOTAL FLOOR AREA: 1609 sq.ft. (149.5 sq.m.) approx.

Whilst every attempt has been made to ensure the accuracy of the floorplan contained here, measurements of doors, windows, rooms and any other items are approximate and no responsibility is taken for any error, omission or mis-statement. This plan is for illustrative purposes only and should be used as such by any prospective purchaser. The services, systems and appliances shown have not been tested and no guarantee as to their operability or efficiency can be given.

Made with Metropix ©2025