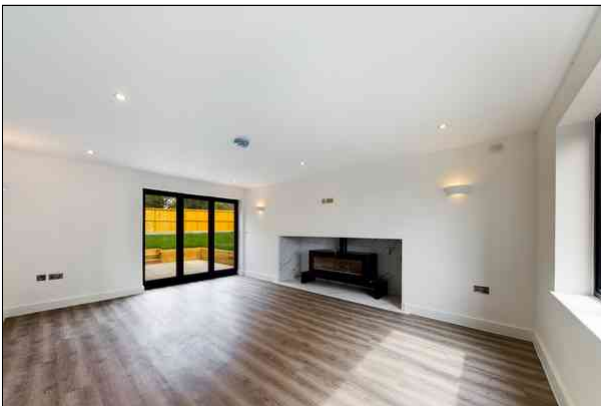




Terence Painter

ESTATE AGENTS

- New Home
- Detached Executive Home
- Gated Development
- Four Bedrooms
- Lounge with Log Burner
- Master Bedroom with En-Suite Shower Room & Walk-in Wardrobe
- Second Bedroom with En-Suite Shower Room
- Kitchen/Diner
- Home Office/Play Room
- Utility Room
- Cloakroom W.C.
- High Specification Fitted Kitchen with Integrated Appliances
- 10 Year Build Zone Warranty
- Well Appointed Family Bathroom
- Landscaped Garden
- Option to Purchase Adjoining Nature Reserve
- Reserve Now!



1 Windmill View, Ramsgate Road, Sarre, Birchington, Kent. CT7 0LF.

Freehold £685,000

AVAILABLE NOW! BRAND NEW FOUR BEDROOM EXECUTIVE DETACHED FAMILY HOME LOCATED WITHIN A GATED DEVELOPMENT IN THE PICTURESQUE VILLAGE OF SARRE!

An exciting opportunity to acquire this attractive newly built generous size four bedroom detached executive family home located at Windmill View, an exclusive gated development of just five brand new homes in the picturesque village of Sarre.

The property offers generous size living accommodation arranged over two floors which will have been finished to an impressive standard and with a high specification throughout.

On the ground floor there is a generous size entrance hall, double aspect lounge with a feature fireplace with a log burner inset, home office/play room, cloakroom/w.c, utility room and a kitchen/diner which features a well appointed modern kitchen with a wide range of integrated appliances.

On the first floor the spacious theme continues with a stunning family bathroom with a freestanding bath and four double bedrooms including a master bedroom suite which boasts an en-suite shower room and a walk-in wardrobe. The second bedroom also features an en-suite shower room.

Externally this home features a landscaped garden with large Indian sandstone patio area and a double driveway with electric car charging point.

available for occupation from mid-April this home is available to view now so call Terence Painter Estate Agents now on 01843 866 866 to arrange your viewing!

Location

Sarre

Sarre is small village ideally located within easy reach of the historic city of Canterbury (approx. 9 miles) and Ramsgate (8 miles), with its Royal Harbour and picturesque marina with its good selection of restaurants, bars and shops. The village of Minster (approx. 4 miles) offers a selection of independent shops, pubs and restaurants. Out of town leisure and shopping facilities can be found at Westwood Cross, approx. 7 miles distant. The property is easily connected with the motorway network via the A299 Thanet Way and A2 and the Thanet Parkway Railway Station (currently under construction) will connect with the High Speed rail services to Ashford International and London St Pancras, and is located within 6 miles.

Ground Floor

Entrance Hall

5.75m x 3.11m (18' 10" x 10' 2") There will be wood-effect vinyl flooring with underfloor heating, carpeted stairs to the first floor and doors leading off to the lounge, office/play room, cloakroom/w.c and the kitchen/diner.

Cloakroom/W.C

1.98m x 1.08m (6' 6" x 3' 7") There will be tiled flooring, concealed cistern with designer pan, heated towel rail, stylish vanity unit with hand wash basin inset and tiled flooring.

Lounge

5.63m x 3.98m (18' 6" x 13' 1") There is a double glazed window to the front of the property and bi-folding doors leading out onto a patio area and the rear garden. This room will feature a log burner inset to a recessed feature fireplace and wood-effect vinyl flooring with underfloor heating.

1 Windmill View, Ramsgate Road, Sarre, Birchington, Kent. CT7 0LF.

£685,000

Home Office/Play Room

3.22m x 3.22m (10' 7" x 10' 7") There is a double glazed window to the side of the property. Wood-effect vinyl flooring with underfloor heating.

Kitchen/Diner

5.62m x 4.08m (18' 5" x 13' 5") There are two double glazed windows to the front of the property and double glazed windows to the side and rear. Door to utility room. The kitchen comprises a range of high quality contemporary handle-less hi-gloss units with colour matched carcasses. There will be a range of integrated appliances including a Bora Pure Induction Cooktop with Integrated Cooktop extractor, Neff electric oven, dishwasher, microwave and and quartz worktops. There will be wood-effect vinyl flooring with underfloor heating .

Utility Room

3.22m x 2.01m (10' 7" x 6' 7") There is a door to the garden, and a range of wall and base units with space and plumbing for a washing machine. Wood effect vinyl flooring .

First Floor

Landing

3.32m x 3.09m (10' 11" x 10' 2") There is a loft hatch, carpet flooring and doors leading off to the bedrooms and family bathroom.

Master Bedroom

4.07m x 3.35m (13' 4" x 11' 0") There is a dormer window to the front of the property with farmland views and doors leading off to the en-suite shower room and walk-in wardrobe. There will be carpet flooring, radiator and a television point.

En-Suite Shower Room

2.23m x 1.89m (7' 4" x 6' 2") There is a dormer window to the rear of the property, walk in shower cubicle, concealed cistern with designer pan, heated towel rail, stylish vanity unit with a wash basin inset, tiled walls and flooring.

Walk-In Wardrobe

2.22m x 2.12m (7' 3" x 6' 11")

Bedroom Two

5.35m x 3.06m (17' 7" x 10' 0") There is a dormer window to the side and a double glazed window to the rear. There is a door to the en-suite shower room, carpet flooring , radiator and a television point.

En-Suite Shower Room

2.32m x 1.05m (7' 7" x 3' 5") There is a walk in shower cubicle, concealed cistern with designer pan, heated towel rail, stylish vanity unit with hand wash basin inset, tiled walls and flooring.

Bedroom Three

3.99m x 2.87m (13' 1" x 9' 5") There is a dormer window to the rear and a double glazed window to the side of the property. There will be carpet flooring, radiator and a television point.

Bedroom Four

3.97m x 2.79m (13' 0" x 9' 2") There is a double glazed window to the side of the property and a dormer window to the front. There will be carpet flooring, radiator and a television point.

1 Windmill View, Ramsgate Road, Sarre, Birchington, Kent. CT7 0LF.

£685,000

Bathroom

3.07m x 2.37m (10' 1" x 7' 9") There is a large frosted double glazed window to the front of the property. This room will be fitted with a wall mounted 'floating' W.C., a free standing bath, heated towel rail, stylish vanity unit with a wash hand basin inset, fully tiled walls, tiled flooring and underfloor heating.

Exterior

Garden

Parking

The development will feature a communal remote operated entrance gate with video intercom. This property will benefit from two allocated parking spaces to the front of the property with an electric car charging point. The driveway is finished with a gravel resin and granite paving leading to the front door with level thresholds and landscaped planters. There is also visitors parking located within the development.

Additional Features

The properties will feature an Air-Source Heat Pump boiler system supplying the hot water (with hot water storage tank) and the heating. There will be an underfloor hot-water heating system to the ground floor and radiators on the first floor. The property will benefit from intruder alarm systems, video gate entry system and door bells. Interior doors will be painted solid wood doors. The properties is also be fitted with mains operated fire and heat alarms.

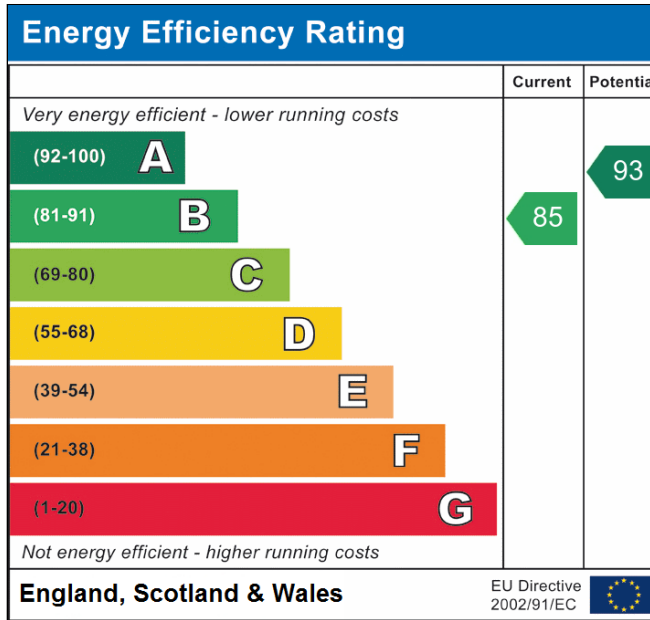
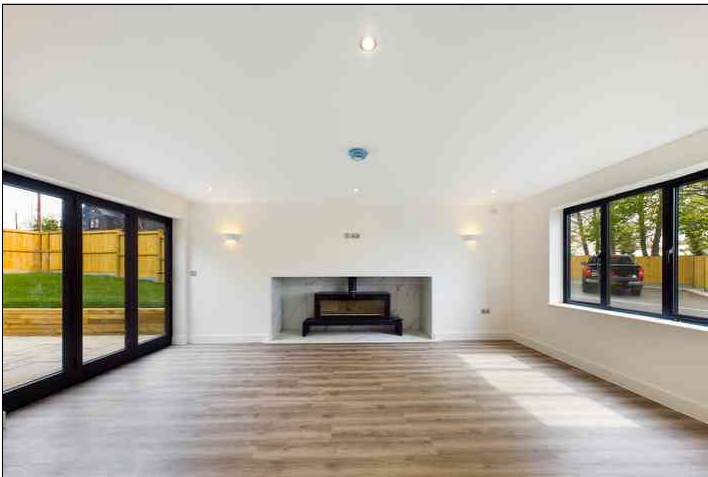
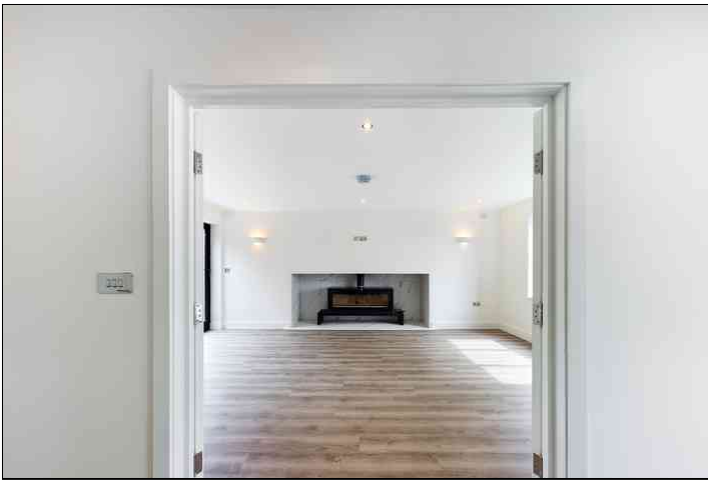
Nature Reserve

Located adjacent to the property is a designated nature reserve area. There is an opportunity to purchase this with the property, at an additional cost, please ask the agents for further details.



1 Windmill View, Ramsgate Road, Sarre, Birchington, Kent. CT7 0LF.

£685,000



Viewing strictly by prior appointment with the Selling Agents
TERENCE PAINTER.

Email: sales@terencepainter.co.uk

Prospect House, 44 High Street, Broadstairs, Kent, CT10 1JT.

These particulars do not constitute any part of an offer or contract. None of the statements contained in these particulars are to be relied on as representations of fact. Any intending purchaser should satisfy themselves by inspection or otherwise as to the correctness of the statements contained in these particulars. The Vendor does not make or give, and neither Terence Painter Properties, nor any person in its employment has any authority to make or give, any representation or warranty whatsoever in relation to this property. The mention of any appliances and/or services in these sales particulars does not imply that they are in full and efficient working order.



Ground Floor Building 1



Floor 1 Building 1

Approximate total area⁽¹⁾

1715.32 ft²

159.36 m²

Reduced headroom

18.01 ft²

1.67 m²

(1) Excluding balconies and terraces

⋮ Reduced headroom
(below 1.5m/4.92ft)

While every attempt has been made to ensure accuracy, all measurements are approximate, not to scale. This floor plan is for illustrative purposes only.

GIRAFFE360

1 Windmill View, Ramsgate Road, Sarre, Birchington, Kent. CT7 0LF.

£685,000

