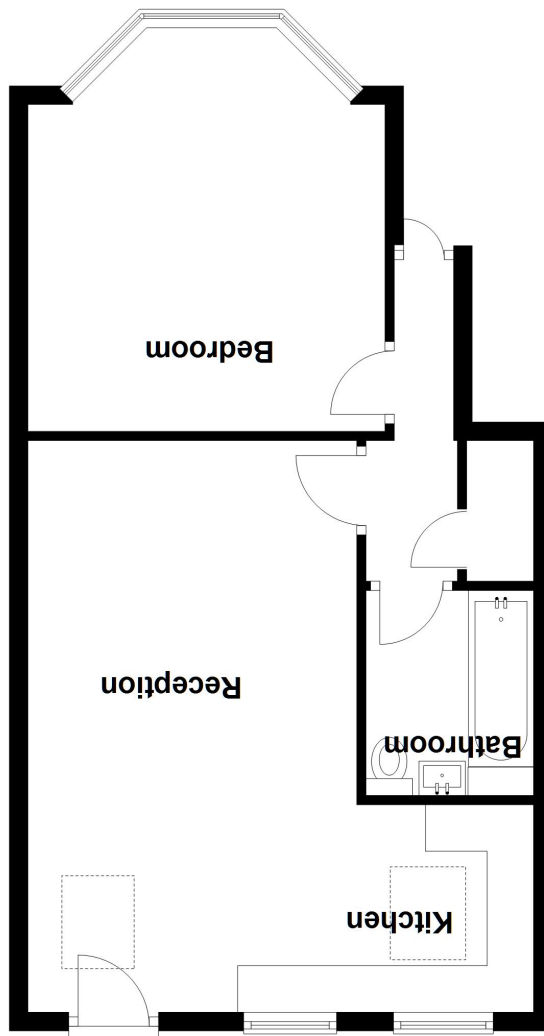


Total area: approx. 49.4 sq. metres (531.2 sq. feet)



Ground Floor
Approx. 49.4 sq. metres (531.2 sq. feet)



Flat 1 10 Greenford Avenue, London, Hanwell. W7 3QP.

£379,000



This newly converted one bedroom ground floor Victorian conversion offers spacious and modern accommodation throughout. The property is only but a short walk, yards from Hanwell BR station with access direct into Paddington and Heathrow, and also benefiting from the forthcoming Cross Rail. Also on your doorstep are multiple day to day shops and bus links into and beyond Ealing Broadway. The flat is completely newly fitted flat comes with a new lease and is in 'ready to move into' order. There is no onward chain so the buyer can own possession as soon as they wish and with too many more added benefits to mention, an early viewing is recommended ! Share of Freehold.

Bedroom

12' 7" x 11' 7" (3.84m x 3.53m) Front aspect double glazed bay window, radaiator, wood floor

Bathroom

Panel enclosed bath with shower attachment, vanity wash hand basin, low level WC, tiled walls and floor

Reception

Wood floor, spot lights, radiator, opening onto

Kitchen

Modern white eye and base level units with single bowl sink and mixer tap, fitted gas hob with oven, wall mounted boiler, plumbing and space for washing machine, two rear aspect double glazed windows and sky light, spot lights

Garden

Mainly paved with shrub and tree borders

