

21 Providence Court,

Frome, BA11 1FS

COOPER
AND
TANNER



OIEO £170,000 Leasehold

1 1 1 EPC C

Description

This spacious one-bedroom ground floor apartment has a stylish layout which incorporates a kitchen accessed off the reception room which enjoys a southerly aspect to the rear.

The apartment benefits from the use of a communal decked terrace which is a wonderfully quiet spot to enjoy the sunshine and views.

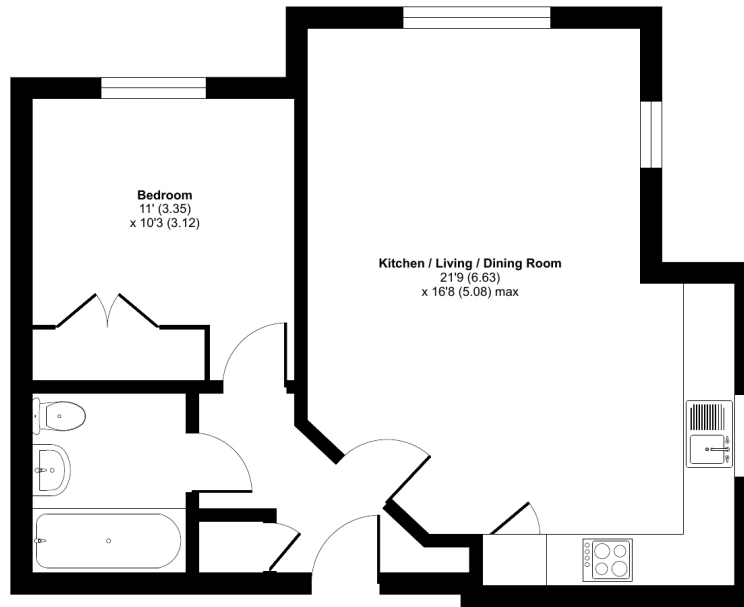
The property is set in a quiet corner position, in a central location and is very accessible. There is allocated parking.

An excellent first time buy or an investment opportunity.

A viewing is highly recommended.

Providence Court, Frome, BA11

Approximate Area = 521 sq ft / 48.4 sq m
For identification only - Not to scale



GROUND FLOOR



Certified
Property
Measurer

Floor plan produced in accordance with RICS Property Measurement Standards incorporating International Property Measurement Standards (IPMS2 Residential). © nrichcom 2023. Produced for Cooper and Tanner. REF: 988399



Features

- A spacious ground floor apartment
- River views
- One bedroom
- Communal balcony
- Allocated parking.
- Quiet corner position



Local Information

- Council Tax Band A
- **Tenure** Leasehold – 125 years, 110 years remaining.
- **Ground Rent** £300.00 per annum
- **EPC Rating** C

FROME OFFICE

Telephone 01373 455060

6 The Bridge, Frome, Somerset, BA11 1AR

frome@cooperandtanner.co.uk

COOPER
AND
TANNER

Important Notice: These particulars are set out as a general outline only for the guidance of intended purchasers and do not constitute, nor constitute part of, an offer or contract. All descriptions, dimensions, reference to condition and necessary permissions for use and occupation, warranties and other details are given without responsibility and any intending purchasers should not rely on them as statements or representations of fact but must satisfy themselves by inspection or otherwise as to the correctness of each of them.

