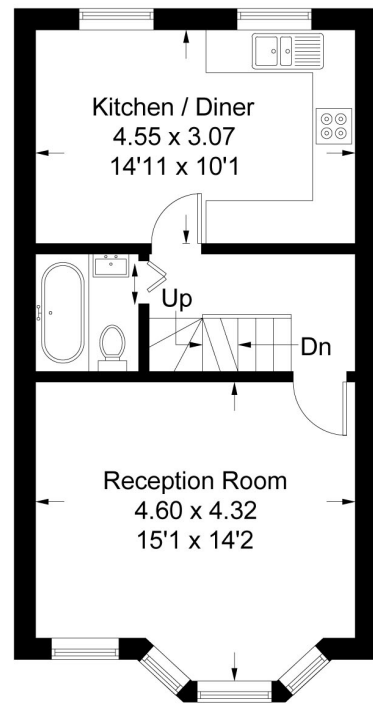
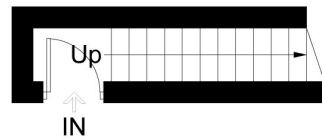
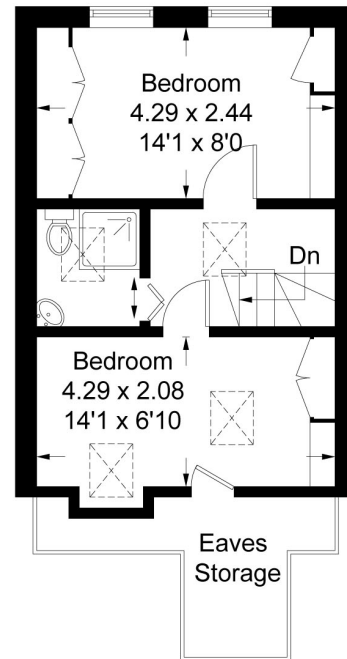


Regina Road, W13

Approximate Gross Internal Area = 72.2 sq m / 778 sq ft
(Excluding Eaves Storage)



Ground Floor



Second Floor

First Floor

Measured in accordance with RICS Code of Measuring Practice. To be used for identification and guidance purposes only. Whilst every care is taken in the preparation of this plan, please check all dimensions, shapes and compass bearings before making any decisions reliant upon them. www.london58.com © 2020 hello@london58.com



2 BEDROOM FLAT

Regina Road, W13
£525,000

This remarkable two bedroom period apartment is arranged over two storeys and has a grand entertaining space as well as a smart kitchen/ diner.

Located only moments from the soon to be Crossrail station in West Ealing, this imposing flat would suit professionals and investors alike.

FEATURES

- Period Split Level Apartment
- Two Double Bedrooms
- Two Bathrooms
- High Ceilings
- Close to West Ealing Crossrail
- Period Features
- Share of Freehold



2 BEDROOM FLAT

Regina Road, W13

Once inside, the front door to the apartment is straight ahead.

It opens into a bright hall with steps leading to the first floor landing. The living room is to the right and spans the entire width of the property. With a broad angled bay and a large picture window it's exceptionally bright and the light bounces off the stripped floorboards. The kitchen/ diner is opposite and is graciously proportioned. There are contrasting blue and warm wood units complemented by wood worktops arranged in a popular horseshoe shape so each appliance is easily to hand. There's even enough room for a large dining table and chairs which makes this space perfect for entertaining. The bathroom is next door and decorated in calming aqua tones with a white suite. The bedrooms are upstairs on the second floor. Both easily accommodate double beds and have bespoke storage built in as well as plenty in the eaves. A well placed shower room services both bedrooms.

