



# Holly Cottage

Hoops Lane, Therfield,  
Hertfordshire, SG8 9QH  
Freehold O.I.E.O £1,150,000

country  
properties



Country Properties are delighted to offer this beautiful Grade II Listed family residence, situated only a moment's walk away from Therfield Village Green and The Fox & Duck a rustic country pub. Located just off the A505 between Royston (3miles) and Baldock (7miles) which both have railway links to London & Cambridge, as well as commutable links via A10, M11 & A1. This beautiful property boasts some stunning original features and benefits from two entrance hallways, a large reception room, a spacious kitchen/diner, four great sized bedrooms, a family bathroom, and shower room. To the front of the property a driveway allows for plenty off-road parking, a double garage, log store, summer house/barn studio, shed, extensive rear garden, Anderson shelter, stable block with tack room and stunning wrap-around landscaped grounds to include a paddock, in total approximately 1.8acres.

- Detached Grade II Listed Extended Thatched Cottage
- Shower Room & Family Bathroom
- Original Features & Exposed Beams
- Spacious Living Room & Kitchen/Diner
- 1 Acre Paddock with Stable Block
- Summer House with mezzanine level & a LPG fireplace, glass doors leading onto a large patio, ideal for entertaining
- 4 Bedrooms
- Inglenook Fireplace
- Popular Village Location
- Beautiful Landscaped Gardens
- Double Garage & Drive for 6 Vehicles





## Front Gardens

Stunning landscaped gardens surrounded by trees and a large hedgerow across the front of the property with a central pathway leading up to the front door of the charming grade II listed cottage

## Boot Room/ Entrance Porch

4' 6" x 6' 9" (1.37m x 2.06m) Accessed via the side pathway through a glazed stable door, single glazed window to front aspect. Beautifully fitted bench with shoe rack below.

## Kitchen & Dining Room

16' 0" x 20' 2" (4.88m x 6.15m) This endearing country kitchen with exposed beams, natural marble, benefits from two single glazed windows to the front aspect, fully fitted wall, base and display units, double bowl undermount stainless steel sink, a beautiful island with large Limestone top, space for a large American fridge/freezer & space for an AGA Range cooker. Opens into the dining space, with a stunning Inglenook multi fuel fireplace for those cold winter nights.

## Bathroom

This impressive family bathroom on the ground floor, has been beautifully done up with exposed beams, the original roll top bath restored to its full glory, low level WC, wash hand basin with vanity unit & integrated washing machine and tumble dryer, heated towel rail, water under floor heating, and a single glazed window to the side aspect.

## Living Room

12' 5" x 16' 1" (3.78m x 4.90m) This spacious living room has a single glazed windows to the front aspect overlooking the gardens, LPG gas feature fireplace with exposed beams throughout. Leads into the snug area .

## Snug Area

8' 4" x 13' 6" (2.54m x 4.11m) The delightful snug area which is part of the extension has a double glazed window to the side aspect and double glazed patio doors onto the rear gardens with far reaching views.





## Downstairs Shower Room

Beautiful modern fitted shower room with a large double shower cubicle with mains shower, wash hand basin, low level flush WC, electric under floor heating and a double glazed window to the rear.

## Master Bedroom

12' 8" x 18' 0" (3.86m x 5.49m) The master bedroom is a large double with fitted wardrobes and a double glazed window to the rear aspect with beautiful scenic views across their land and beyond. This room provides access into the second bedroom.

## Bedroom Two

14' 1" x 18' 7" (4.29m x 5.66m) The second bedroom is a spacious double room with access into the master bedroom and third bedroom. Accessed via its own staircase, there is a built in cupboard, and dual aspect single glazed windows to the front and side of the property over looking the grounds.

## Bedroom Three

10' 7" x 11' 5" (3.23m x 3.48m) The third bedroom is a good sized double room with a built in cupboard, access into the second bedroom and front single glazed window.





## Bedroom Four

9' 5" x 12' 4" (2.87m x 3.76m) The fourth bedroom is a good sized single room with built in wardrobes and a single glazed window to the side aspect.

## Double Garage

17' 5" x 20' 3" (5.31m x 6.17m) The spacious double garage has power, lighting, electric box, toilet, wash hand basin with hot and cold running water, two sets of double wooden doors and its fully insulated. Log store to the side.

## Summer Room/ Barn Studio with Mezzanine

9' 8" x 17' 2" (2.95m x 5.23m) The summer room/ barn studio is located to the side of the garage with a large mezzanine level above and storage area to the rear. There are 4 x Velux windows to both sides, an LPG gas fireplace and large double glazed sliding patio doors onto the patio which has ample space for garden furniture and two fitted electric heaters. The ideal area for enjoying those evening sunsets and entertaining. Mezzanine area restricted head height.

## Shed

9' 10" x 11' 9" (3.00m x 3.58m) Large outside shed located in the side garden with single glazed windows to one side

## Anderson Shelter

10' 0" x 22' 9" (3.05m x 6.93m) Located to the rear garden, ideal for storage. restricted head height.

## Stables

11' 1" x 14' 0" (3.38m x 4.27m) There are two stables and a large tack room located in a one acre fenced paddock, with power, lighting and water. All three boxes are the same size.

## Rear Garden

The striking grounds of this residence have been beautifully thought-out and landscaped, mainly laid to lawn with mature trees, shrubs, plants and hedgerows. This property offers large patio areas for entertaining or alfresco dining, with lawns for the children, grand children and dogs to play, while over looking your horses or livestock.





## Holly Cottage

Holly Cottage is a truly captivating cottage nestled in the heart of Therfield village, this cosy country home, has everything to offer all the family. Do not miss the chance to view this truly exquisite residence.

### Our Vendor's Loves

It has felt such a privilege to live at Holly Cottage for the last 23 years.

We could not have had a more idillic environment to bring up three children. We love the peaceful tranquility being so close to nature, walking, relaxing, cosy nights by the fires. Quad biking, BBQ's and sundowners up at the barn mesmerised by the sunsets. Whatever age, toddlers, children, teenagers, adults, we have all been blown away by the enchantment of Holly Cottage.

We have enjoyed the most exciting garden parties, anniversaries and hosted a wonderful wedding. Winter, especially Christmas, is a truly magical time of the year to experience. We each have unforgettable happy memories from living at Holly Cottage.





Holly Cottage,  
Hoops Lane, SG8

Approximate Area = 301.09 sq m / 3241 sq ft  
(Including Out Buildings & Excluding Anderson shelter)  
Approximate Out Buildings Area = 140.37 sq m / 1511 sq ft  
(Including Void)  
Anderson shelter Area = 21.18 sq m / 228 sq ft

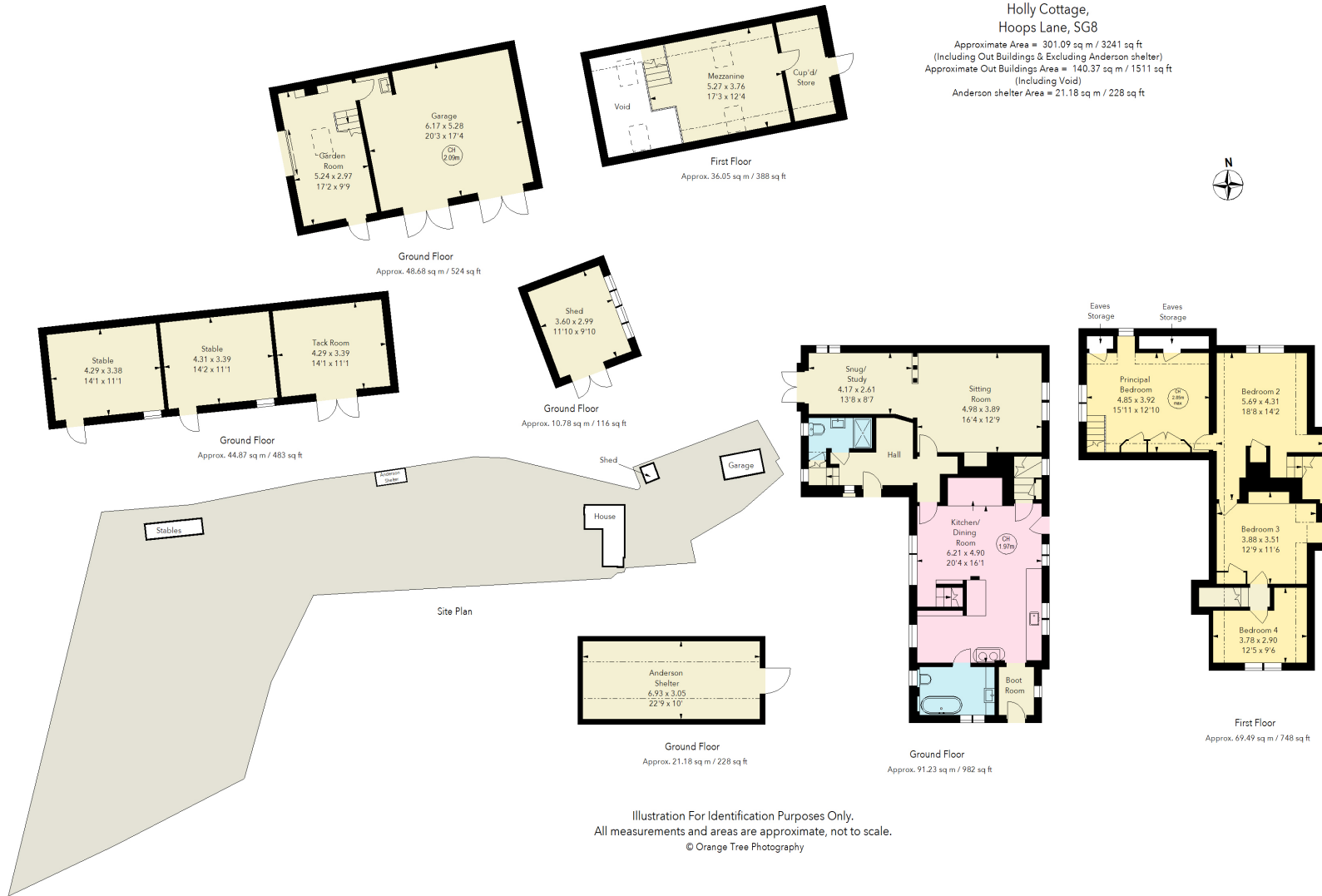


Illustration For Identification Purposes Only.  
All measurements and areas are approximate, not to scale.  
© Orange Tree Photography

All measurements are approximate and quoted in metric with imperial equivalents and for general guidance only and whilst every attempt has been made to ensure accuracy, they must not be relied on. The fixtures, fittings and appliances referred to have not been tested and therefore no guarantee can be given and that they are in working order. Internal photographs are reproduced for general information and it must not be inferred that any item shown is included with the property. For a free valuation, contact the numbers listed on the brochure.



Viewing by appointment only

Country Properties | 45, High Street | SG8 9AW

T: 01763 245121 | E: [royston@country-properties.co.uk](mailto:royston@country-properties.co.uk)

[www.country-properties.co.uk](http://www.country-properties.co.uk)

country  
properties