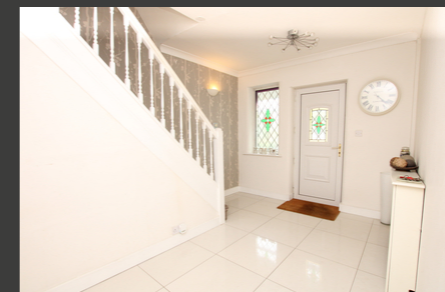


Lime Grove, Lowton, WA3 1HL

£330,000

Offers Over



Spacious three bedroom semi-detached property with larger than average rear garden and plans have been drawn up for the potential to extend to a fourth bedroom with en suite and open plan living space to the rear, plans can be viewed upon request.

 x 3  x 1

See more of this house at [ashtons.net](https://www.ashtons.net)

