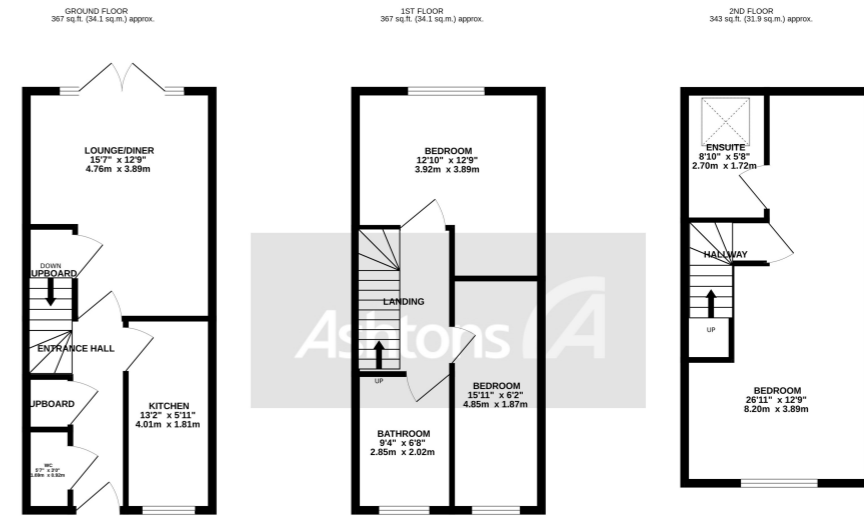


# 14 Lingley Court, Great Sankey, WA5 £270,000



TOTAL FLOOR AREA: 1078 sq.ft. (100.1 sq.m.) approx.

While every attempt has been made to ensure the accuracy of the floorplan contained here, measurements of doors, windows, rooms and any other items are approximate and no responsibility is taken for any error, omission or mis-statement. This plan is for illustrative purposes only and should be used as such by any prospective purchaser. The services, systems and appliances shown have not been tested and no guarantee as to their operability or efficiency can be given.  
Made with Metreplan ©2023



Don't miss the opportunity to make this stunning townhouse your forever home. Contact us today to arrange a private viewing and experience the allure and elegance of this family-friendly haven.



See more of this house at [ashtons.net](https://www.ashtons.net)

