



philip  
INDEPENDENT  
ESTATE  
AGENT  
Jarvis



**Westwood Park The Lenham, Ham Lane, Lenham, Maidstone, Kent. ME17 2PZ.**

**£585,000**

## Property Summary

"Jones Homes really know how to build a quality property. I was so impressed at the attention to detail".  
- Matthew Gilbert, Branch Manager.

Presenting to the market the last two units available at Westwood Park which is a Jones Home development located on the edge of Lenham village. The two units available are both four bedroom detached homes with names of The Davenham and The Lenham.

The developers also have various incentives available which adds to the desirability of the units.

Lenham is an incredibly popular village which boasts a wide range of shops, amenities and facilities to include schooling, two public houses and restaurants. There are also excellent commuter links with great access to the M20 as well as its direct railway line to London Victoria.

Do not miss this last chance to be apart of this new exciting village development, so book your viewing without delay.

## Features

- Jones Homes New Build
- Stunning Four Bedroom Detached Home
- Ensuite To Master Bedroom
- Village Location
- Incentives Available
- High Quality Finish Throughout
- NEFF Appliances
- EPC Rating: TBC
- Council Tax Band: TBC



## **Ground Floor**

### **Front Door To**

### **Hall**

Radiator. Stairs to first floor landing with cupboard underneath housing consumer unit.

### **Kitchen/Diner**

Two sets of double glazed window to rear. Double glazed French doors to rear. Radiator. Range of base and wall units. Double sink. Integrated appliances to include Neff oven, Neff fridge/freezer. Neff dishwasher and Neff gas hob with extractor above.

### **Utility Room**

Double glazed door to side access. Radiator. Base and wall units with sink. Space for washing machine. Wall mounted gas Vaillant boiler.

### **Lounge**

Double glazed bay window to front. Radiator. TV & BT point. Feature fireplace. Two double windows to side.

### **Study**

Double glazed window to front. Radiator. TV & BT point.

### **WC**

Radiator. Extractor. Corner hand basin and low level WC, half tiled walls.

## **First Floor**

### **Landing**

Radiator. Cupboard housing water tank.

### **Bedroom One**

Double glazed window to front. Radiator. Two built in double wardrobes. TV point.

### **Ensuite**

Double glazed frosted window to front. Fully tiled walls. Suite comprising of low level WC, wash hand basin and shower cubicle, chrome heated towel. Radiator. Extractor.

### **Bedroom Two**

Double glazed window to front. Radiator. TV point.

### **Bedroom Three**

Double glazed window to rear. Radiator. TV point. Hatch to loft access.

### **Bedroom Four**

Double glazed window to rear. Radiator. Tv point.

### **Bathroom**

Double glazed frosted window to rear. Fully tiled walls. Chrome heated towel rail. Extractor. Suite comprising of low level WC, wash hand basin. Panelled bath with shower attachment. Separate walk in shower cubicle.

## **Exterior**

### **Front Garden**

Flower beds to two borders. Paved pathway to front door. Side access.

### **Parking**

Block paved driveway for two vehicles. Leading to

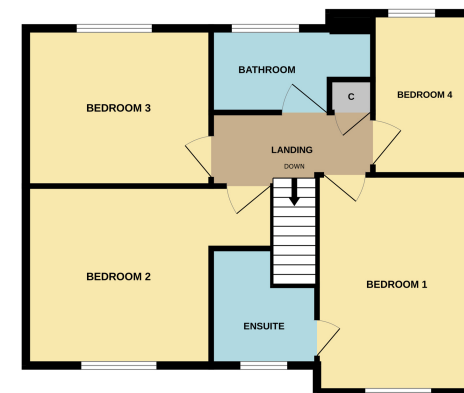
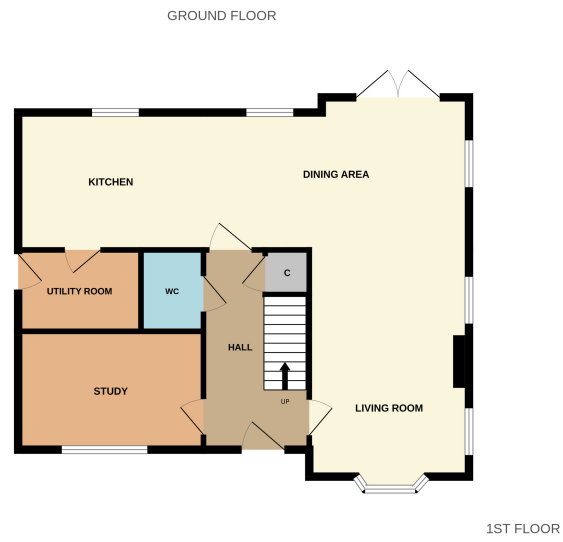
### **Single Garage**

Up and over door. Power and light. Pedestrian access.

### **Rear Garden**

Mainly laid to lawn with laurel borders. Paved patio. Side access.





Whilst every attempt has been made to ensure the accuracy of the floorplan contained here, measurements of doors, windows, rooms and any other items are approximate and no responsibility is taken for any error, omission or mis-statement. This plan is for illustrative purposes only and should be used as such by any prospective purchaser. The services, systems and appliances shown have not been tested and no guarantee as to their operability or efficiency can be given.  
Made with Metropix ©2024

Please Note: All dimensions are approximate and quoted for guidance only. Reference to appliances and/or services does not imply they are necessarily in working order or fit for purpose. interested parties are advised to obtain verification from their solicitors as to the freehold/leasehold status of the property, the position regarding any fixtures and fittings and where the property has been extended/converted as to Planning Approval and Building Regulations compliance. These particulars do not constitute or form part of an offer or contact, nor may they be regarded as representations. All interested parties must themselves verify their accuracy. Where a room layout or virtual tour included this is for the general guidance only, it is not to scale and its accuracy cannot be confirmed.



Viewing Strictly By Appointment With

