

FOR SALE

£239,950

Twickenham Drive, Leasowe, Wirral. CH46 2QF



Well-presented family home! Sat on Twickenham Drive in Leasowe is this substantial, three bedroom, semi-detached home. A credit to the current owners throughout, you also find yourself close to local amenities, reputable schools and great transport links, along with stunning walks across Leasowe beach right on your doorstep. This is the ideal home for a first-time buyer or growing family due to everything on offer.

Ground Floor

Lounge

12' 0" x 14' 11" (3.66m x 4.55m)

Dining Room

11' 8" x 14' 5" (3.56m x 4.39m)

Kitchen

16' 8" x 10' 5" (5.08m x 3.17m)

Garage

7' 9" x 16' 3" (2.36m x 4.95m)

First Floor

Bedroom

12' 0" x 13' 2" (3.66m x 4.01m)

Bedroom

12' 0" x 12' 0" (3.66m x 3.66m)

Bedroom

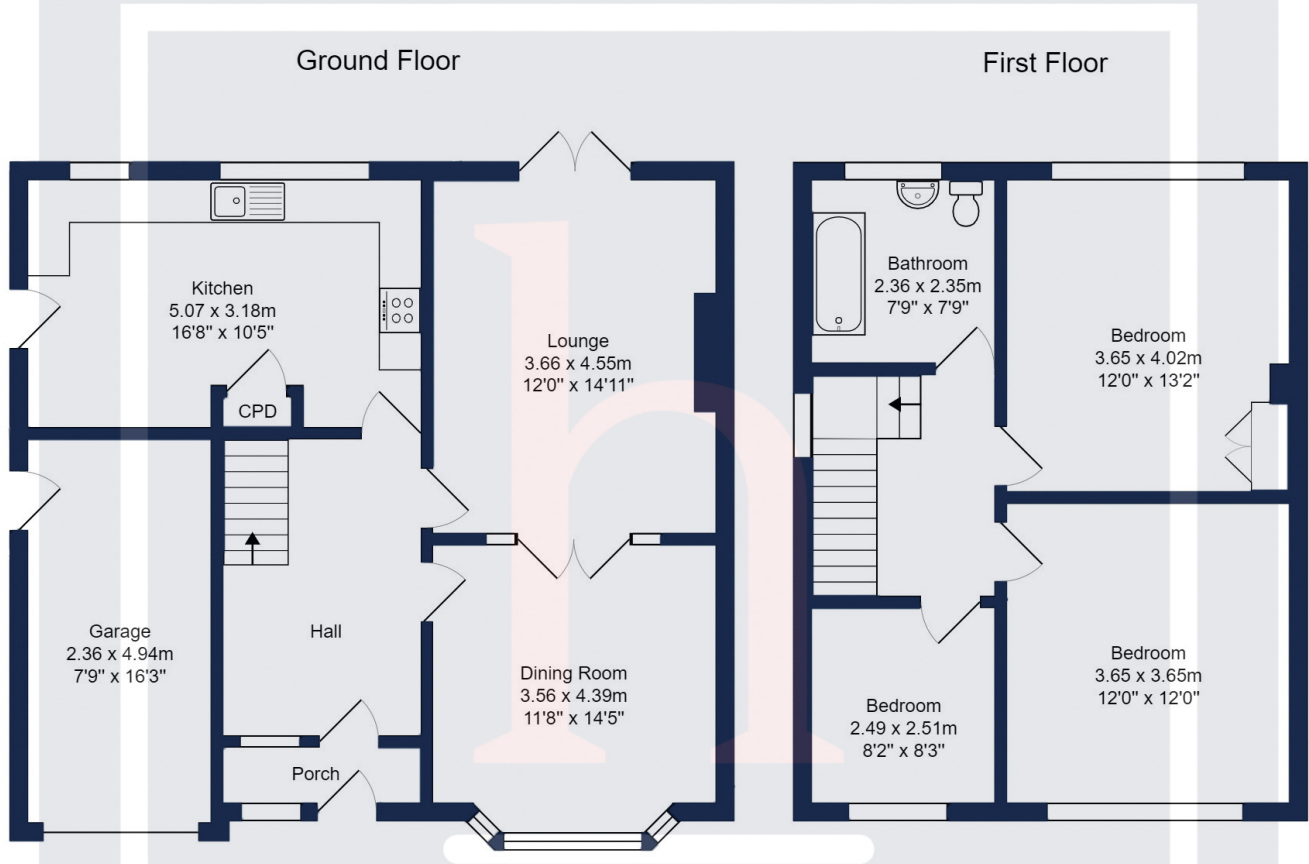
8' 2" x 8' 3" (2.49m x 2.51m)

Bathroom

7' 9" x 7' 9" (2.36m x 2.36m)







Total Area: 122.3 m² ... 1316 ft²
 All measurements are approximate and for display purposes only

Energy Efficiency Rating		Current	Potential
<i>Very energy efficient - lower running costs</i>			
(92+)	A		
(81-91)	B		84
(69-80)	C		
(55-68)	D	69	
(39-54)	E		
(21-38)	F		
(1-20)	G		
<i>Not energy efficient - higher running costs</i>			
England, Scotland & Wales		EU Directive 2002/91/EC	