



30 Exeter Road, Feltham, Greater London, TW13 5NX

WELL PRESENTED & SPACIOUS THREE BEDROOM PROPERTY SITUATED ALONG THIS SOUGHT AFTER ROAD IDEALLY LOCATED FOR LOCAL SHOPS & SCHOOLS AND PROVIDING EASY ACCESS FOR LOCAL MOTORWAY NETWORKS. The property benefits from a spacious lounge, fitted kitchen open to dining room, three well-proportioned bedrooms, bathroom, large secluded rear garden with garage to rear. Viewings Highly Recommended!

ROOM DESCRIPTIONS

Double glazed door leading to:

Entrance Hall

Double glazed window, two radiators, stairs to first floor, understairs storage cupboard, doors to:

Lounge

Rear aspect double glazed sliding patio door to Garden, light and power points, radiator, TV point, wood-style laminate flooring.



Dining Room

Front aspect double glazed window, light and power points, radiator, wood-style laminate flooring.



Kitchen

Rear aspect double glazed window and door to Garden, range of fitted units at eye and base level, roll edged worktops, 1 1/2 bowl sink drainer unit, space for cooker, washing machine, dishwasher and fridge/freezer. Wall mounted boiler.



First Floor

Landing

Front aspect double glazed window, light point, radiator, access to loft space and doors to:

Bedroom 1

Rear aspect double glazed window, light and power points, radiator, built-in storage cupboard.



ROOM DESCRIPTIONS

Bedroom 2

Rear aspect double glazed window, light and power points, radiator, built-in storage cupboard.



Bedroom 3

Front aspect double glazed window, light and power points, radiator.



Bathroom

Front aspect double glazed window, panel enclosed bath with shower over, low level W.C, pedestal wash hand basin, radiator, partly tiled walls.



Outside

Front Garden

Mainly laid to lawn with pathway to front door.

Rear Garden

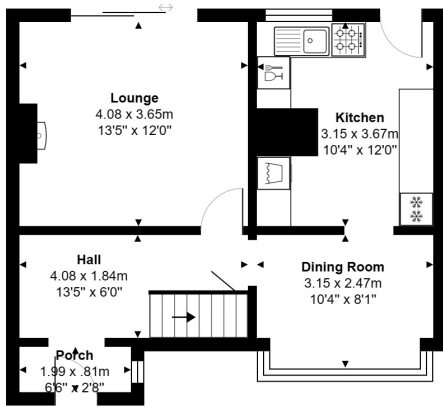
Brick-built sheds and W.C, paved patio nearest to house leading to lawn with shrub borders, pathway to rear gate, Garage inset to garden, outside tap and light.



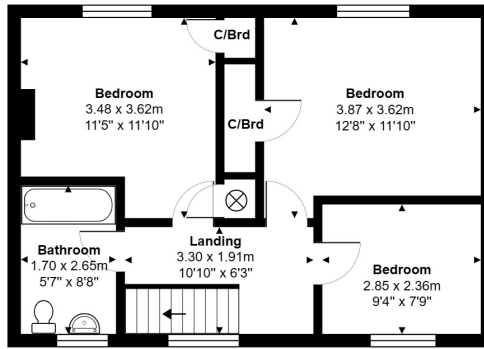
Garage

With metal up and over door.

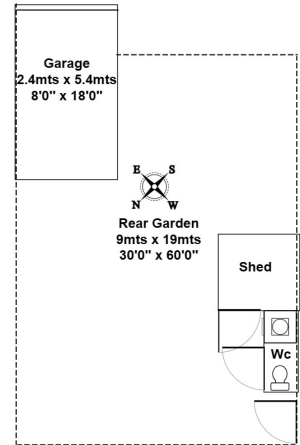
FLOORPLAN



Ground Floor



First Floor



Garden

Total Area: 91.5 m² ... 985 ft²

All measurements are approximate and for display purposes only.