



# Harvest Way, Maldon, CM9 4PS

Council Tax Band E (Maldon District Council)



£530,000 Freehold



## ACCOMMODATION

A superbly presented four bedroom detached family home which has been much improved throughout and features smooth ceilings, modern bathroom and en-suite showers and more recently a new fitted kitchen with integrated appliances. The accommodation includes entrance hall, cloakroom, lounge, separate dining room, study and kitchen with utility room. On the first floor are two double bedrooms with fitted wardrobes and modern en-suite showers, two single bedrooms and a modern family bathroom complete the internal space. Outside there is a tandem garage with extensive eaves storage space and parking for 2 cars to the front. The rear garden enjoys an east facing aspect and features a large patio area and extensive lawn with screen hedging to provide a high degree of privacy.

## LOCATION

Blackwater Park is a popular development located between Maldon and Heybridge, accessed via Heybridge Approach. There are local nature/river walks at Elms Park, which is opposite the development. Blackwater Retail Park is minutes away and provides a range of shopping and recreational facilities. Maldon town centre extends the range of shops and facilities on offer and there is also Hythe Quay and Promenade Park which are both very popular locations for visitors to Maldon and local families. For those commuting to London then Hatfield Peverel station is located less than 5.5 miles away and there is also access onto A12 and direct train links to London Liverpool Street.

- Popular Blackwater Park development
- Two en-suite shower rooms and family bathroom
- Re-fitted kitchen with integrated appliances and separate utility room
- Gas central heating and double glazing
- Cul de sac position
- Early viewing advised
- Superbly presented detached four bedroom family home
- Lounge, dining room and study
- Ground floor cloakroom
- Tandem garage with extensive roof storage space
- Enclosed east facing rear garden





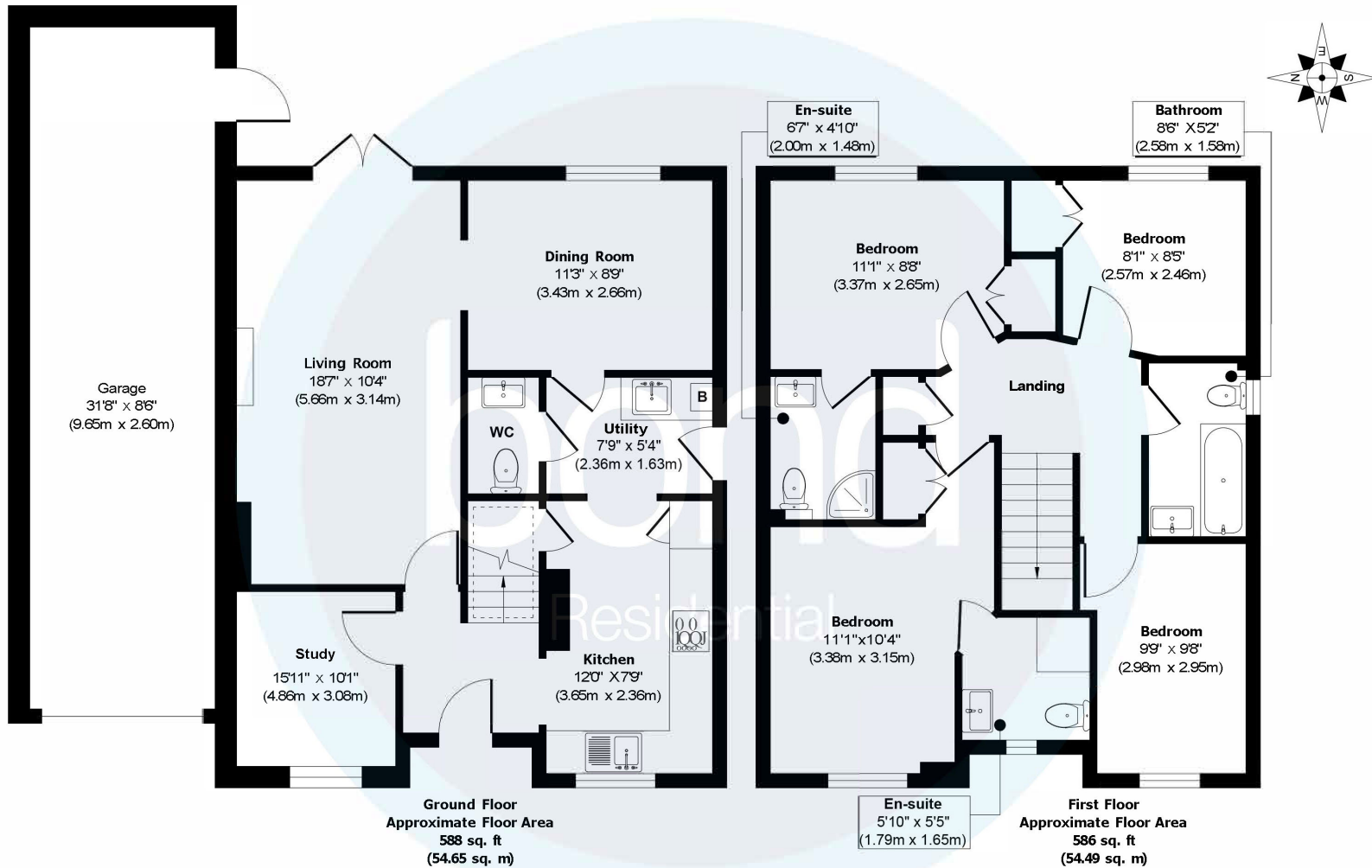












**Approx. Gross Internal Floor Area 1174 sq. ft/ 109.14 sq. m**

Illustration for identification purposes only, measurements are approximate, not to scale.

Produced by Elements Property

10, Maldon Road,  
Danbury, Essex, CM3 4QQ  
Telephone: 01245 222856  
Website: [www.bondresidential.co.uk](http://www.bondresidential.co.uk)

Consumer Protection from Unfair Trading Regulations 2008 and the Business Protection from Misleading Marketing Regulations 2008. Bond Residential have made every effort to ensure that consumers and/or businesses are treated fairly and provided with accurate material information as required by law. We have not tested any apparatus, equipment, fixture, fitting or any services and as such are unable to verify they are in working order, fit for their purpose, or within the ownership of the seller or landlord. Neither have we been able to check the legal documentation to verify the legal status of the property. We therefore advise potential buyers or tenants to verify these matters with their own solicitors or other advisers.

