

HILLBROW ROAD

Esher



Hawksman

2 SELBORNE VILLAS
HILLBROW ROAD
ESHER
SURREY
KT10 9UD

Villa Home | 4 Bedrooms - 2 ensuite

Dressing Room | 4 Bathrooms

Gorgeous Kitchen/Breakfast/Family Room

Immaculate Garden | Utility Room

Garage and Parking | Moments from Esher

High Street | Close to Esher Rail Station and

Sandown Park

HAWKSMAN.COM

01372 235135

ESHER@HAWKSMAN.COM



KITCHEN/BREAKFAST ROOM



20'10" X 19'8"











DRAWING ROOM



19'7" X 14'1"



BEDROOM

18'1" X 10'3"





BEDROOM

13'5" X 9'5"





BEDROOM

18'0" X 10'3"





BEDROOM

10'4" X 9'3"

















2
Selsome Villas



2
Selborne Villas



GARDNER ALABAMA


GARDNER ALABAMA

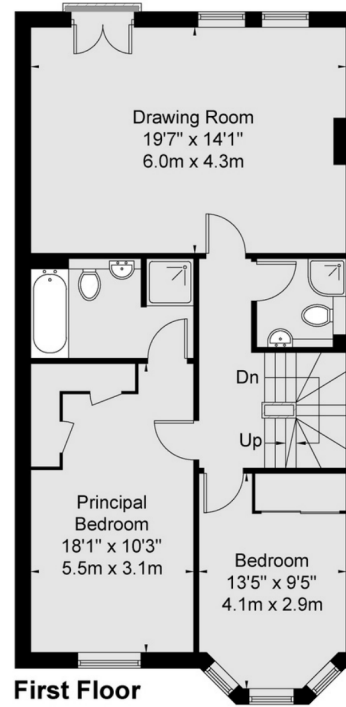
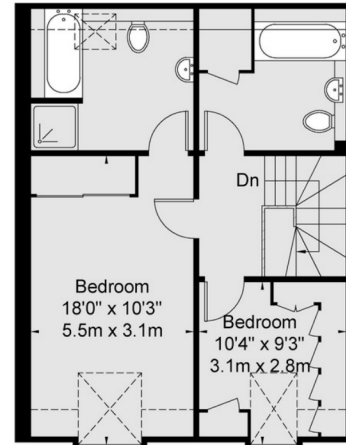
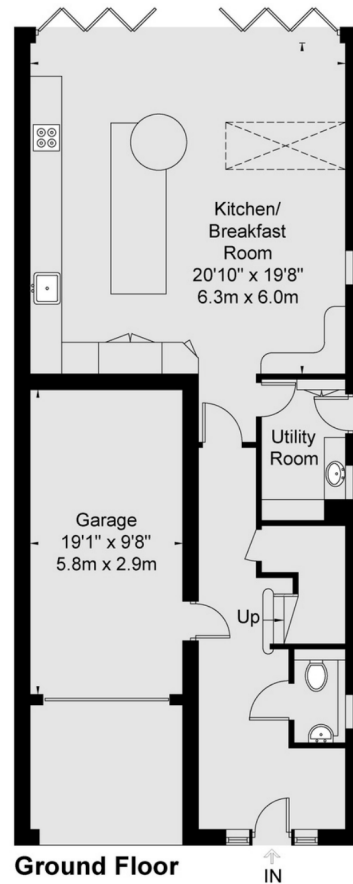
HY05 PZ

Selborne Villas

Approx Gross Internal Area = 205.3 Sq m / 2209 Sq Ft



 = Reduced headroom below 1.5m / 5'0"



Viewmedia @ 2023
Viewmedia.co.uk

Whilst every attempt has been made to ensure the accuracy of this floor plan, measurements of doors, windows and rooms are approximate and no responsibility is taken for any error or omission. This illustration is for identification purpose only. Measured and drawn accordance with RICS guidelines. Not drawn to scale, unless stated. Dimensions shown are to the nearest 3" and are to the points indicated by the arrow heads.