



Mill Hill Road, London, W3 8JE

Cow & Co
LONDON



Guide price of £475,000 - £575,000. A stylish, split-level garden flat on a quiet street of period houses just a short walk from Acton Town Tube Station. Light filled and extremely spacious this property is part of a recent conversion of two adjoining houses on Mill Hill Road. With two large double bedrooms, a modern bathroom, a further separate WC and a modern open plan kitchen living space which opens on to a large and private garden this property offers a bright modern feel throughout.

Acton Town tube station (District and Piccadilly lines) is just over a quarter of a mile away and Acton Central station (Overground) is just over half a mile away. Elizabeth Line station Acton Mainline is 12min walk from the property.



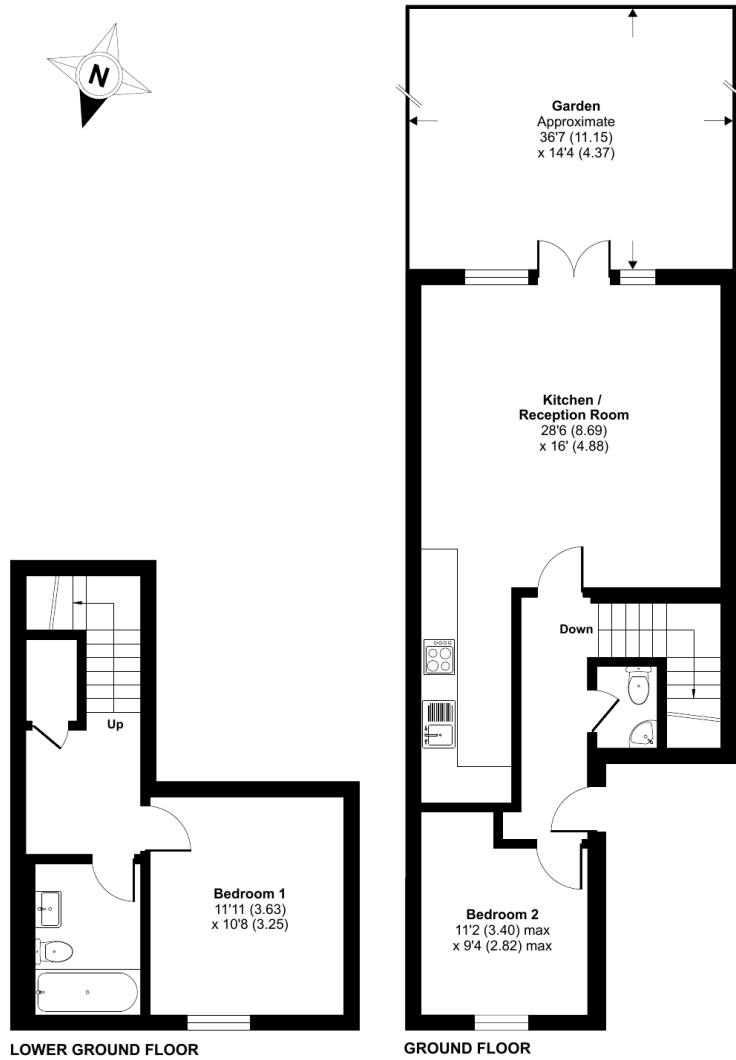
- Split level apartment
- Two double bedroom apartment
- Large private garden
- Modern Kitchen
- Separate additional W.C
- Spacious living area with ample space to dine and entertain
- Mill Hill Conservation Area
- Close to a wealth of amenities and transport links



Mill Hill Road, London, W3

Approximate Area = 845 sq ft / 78.5 sq m

For identification only - Not to scale



Floor plan produced in accordance with RICS Property Measurement Standards incorporating International Property Measurement Standards (IPMS2 Residential). © nchecon 2023. Produced for Cow & Co Properties Ltd. REF: 1059232

Tel: 0208 065 0010
Email: thehub@cowandco-london.com
Web: cowandco-london.com

Agents note: All measurements are approximate and whilst every attempt has been made to ensure accuracy they are for general guidance only and must not be relied on. The fixture and fittings referred to have not been tested and therefore no guarantee can be given that they are in working order. Internal photographs are reproduced for general information and it must not be inferred that any item shown is included with the property.

Cow & Co

LONDON