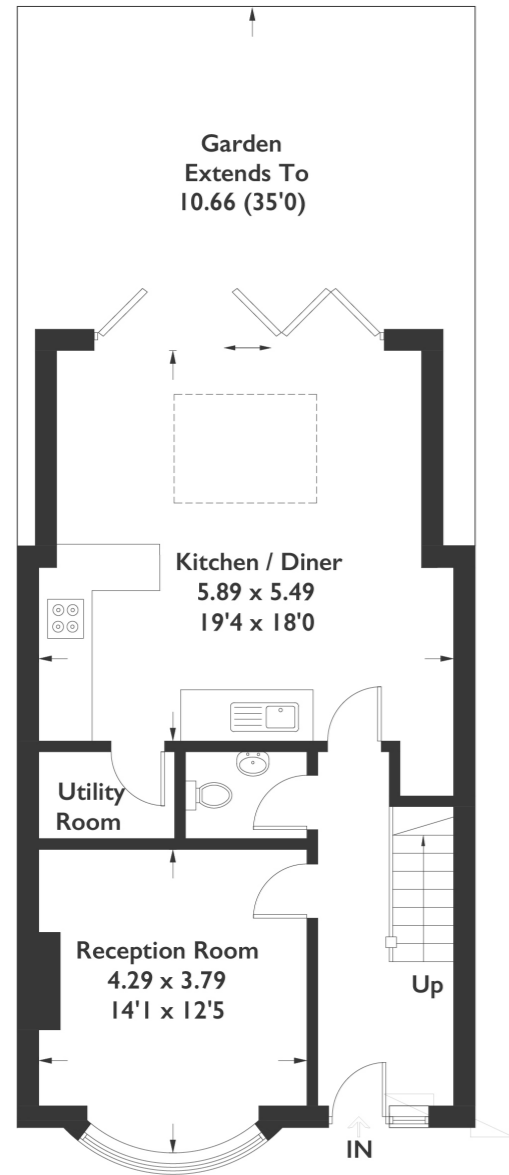
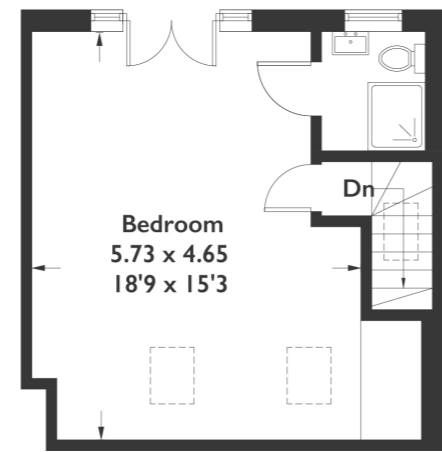


Burnham Way, W13

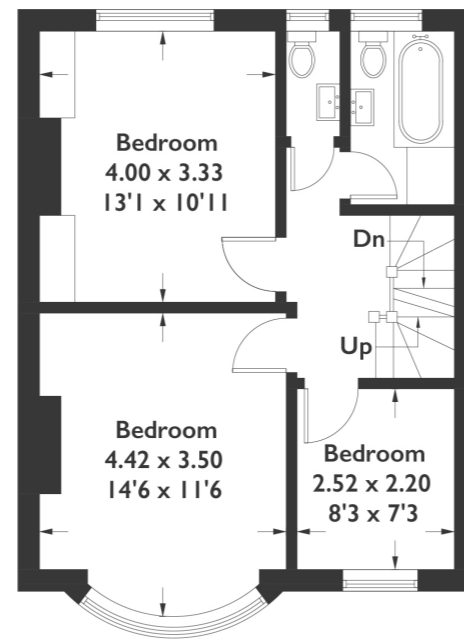
Approximate Gross Internal Area = 139.5 sq m / 1502 sq ft



Ground Floor



Loft



First Floor



4 BEDROOM HOUSE

Burnham Way, W13

£999,950

This four bedroom house, refurbished by the current owners, has been stylishly designed to complement the 1930's era houses in the street yet also offer the best of modern family living.

With an open plan kitchen/ diner and a landscaped rear garden, it's the perfect family home.

FEATURES

- 1930's House
- Four Bedrooms
- Close to Fielding Primary
- Open Plan Kitchen/Diner
- Moments from Walpole & Lammas Parks
- Quiet Tree Lined Road

4 BEDROOM HOUSE

Burnham Way, W13

£999,950

Located on a peaceful road in the heart of Northfields moments from local amenities and transport links and schools.

Approached through a tidy front garden, the smart front door opens into the spacious hallway. To the left is the living room with a large bay window and fireplace, providing the main focal point. Next door is the open plan kitchen and diner. The contemporary kitchen is fitted with black granite worktops and white cupboards, resulting in an elegant finish. There is also a convenient utility room to the left of the kitchen. The open plan dining area which overlooks the garden, can fit a large dining table perfect for entertaining.

Outside, the garden features patio and is mostly laid to lawn. It enjoys the best of the sun all day due to its westerly aspect.

Back inside and upstairs on the first floor, is the family bathroom and three bedrooms, two of which can accommodate double beds and additional space for storage.

Up a few stairs on the second floor, is the principle bedroom with an en-suite bathroom and eaves storage. There are also Juliet balcony doors with stunning views over Ealing. EPC Rating: C

