



Day & Co  
ESTATE AGENTS

28 Cavendish Street  
Keighley  
BD21 3RG



23 Ashmount Mews, Haworth,  
Keighley, West Yorkshire, BD22  
8EQ

£275,000

T: 01535 664609

W: [www.dayandcoestateagents.co.uk](http://www.dayandcoestateagents.co.uk)

E: [keighley@dayandcoestateagents.co.uk](mailto:keighley@dayandcoestateagents.co.uk)



- Well Presented Modern Semi-Detached
- Parking & Single Garage
- Cul-De-Sac Location

- Four Bedrooms & Master En-Suite
- Sought After Historic Village Of Haworth
- EPC Rating C

## SUMMARY

**\*\*A MODERN 4 BEDROOM SEMI-DETACHED FAMILY HOME, CUL-DE-SAC POSITION IN SOUGHT AFTER HISTORIC VILLAGE OF HAWORTH!!** Having an en-suite shower room to the master bedroom, front garden, rear patio, parking & single garage - **VIEWING ESSENTIAL TO FULLY APPRECIATE!!** EPC Rating C

## FULL DESCRIPTION

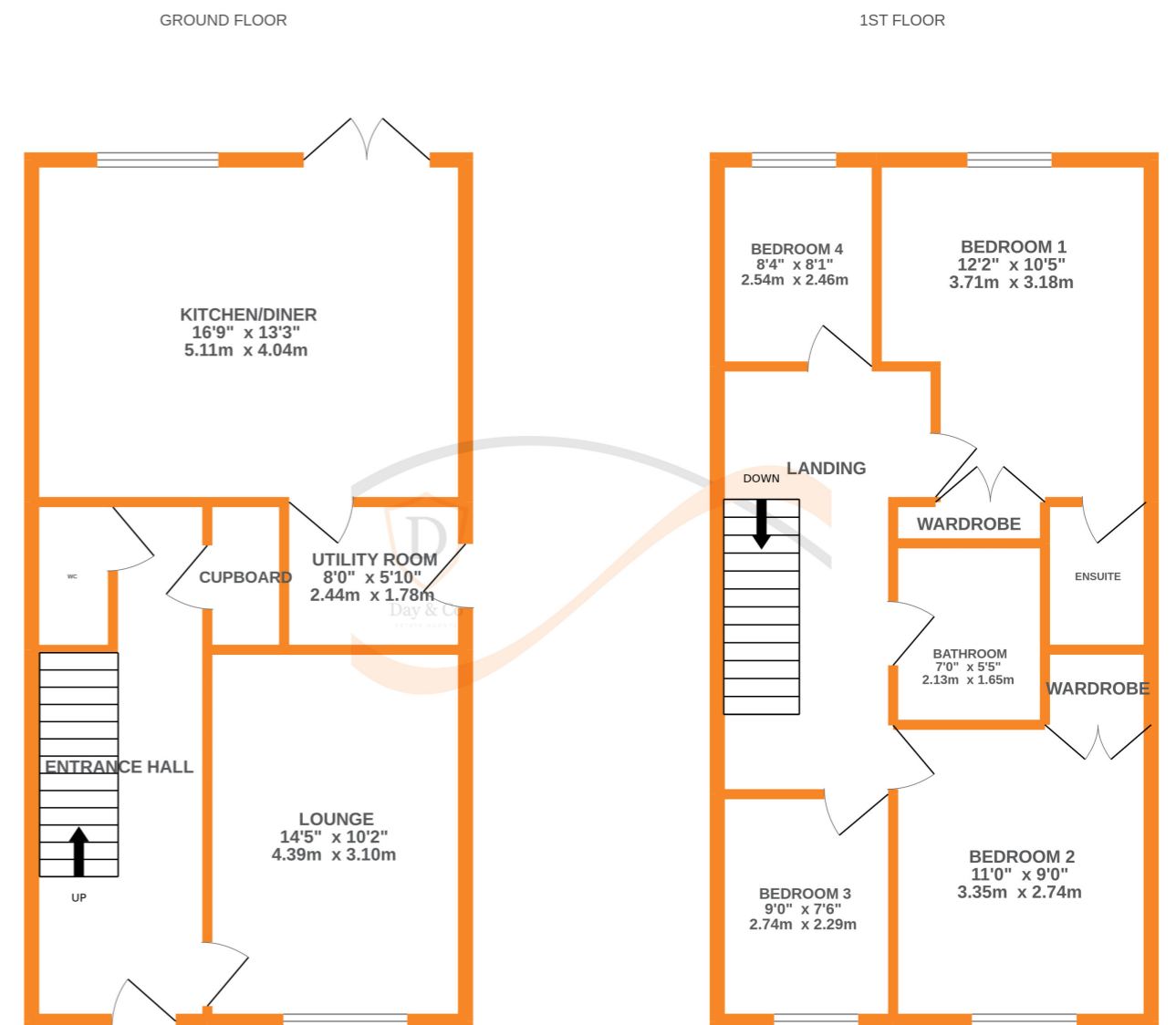
Viewing is essential to fully appreciate this modern four bedroom semi-detached property, situated in a pleasant cul-de-sac position in the sought after historic village of Haworth.

The deceptively spacious accommodation comprises of an entrance hall giving access to a useful cloaks WC, the spacious dining kitchen has a range of modern base and wall mounted units, integrated oven, hob and extractor fan, double glazed patio doors to the rear, and gives access to a separate utility room. The lounge has an electric fire, double glazed window to the front aspect and a radiator. To the first floor there are four bedrooms, the master having fitted wardrobes and an en-suite shower room, and the second bedroom also benefiting from built in wardrobes. The house bathroom completes the internal accommodation having a bath with shower over, WC, wash hand basin.

Externally there is a rear patio, front lawn, parking and a single garage. There is access to the communal garden which enjoys fabulous far reaching views.

EPC Rating C.

Council Tax Banding D.



Whilst every attempt has been made to ensure the accuracy of the floorplan contained here, measurements of doors, windows, rooms and any other items are approximate and no responsibility is taken for any error, omission or mis-statement. This plan is for illustrative purposes only and should be used as such by any prospective purchaser. The services, systems and appliances shown have not been tested and no guarantee as to their operability or efficiency can be given.  
Made with Metropix ©2022