

## **Thira House 6b Godwyn Road**

Folkestone  
CT20 2LA

**£1,250,000 FREEHOLD**

FOR SALE WITH BURNAP + ABEL... Burnap + Abel welcome you to this stunning 4 bedroom, 3 bathroom home located on a picturesque tree-lined road in the charming town of Folkestone. Boasting a spacious layout and contemporary design, this magnificent property is sure to impress even the most discerning buyers. Step inside and be greeted by a grand entrance hall that flows into the formal living area with high ceilings and large windows that flood the room with natural light. The gourmet kitchen features top-of-the-line appliances, sleek countertops, and plenty of storage space for all your culinary needs. The master suite is a true oasis, complete with a luxurious ensuite bathroom and walk-in closets. Three additional bedrooms provide ample space for family or guests, while the landscaped garden provides an impressive space for summer parties or barbecues. Conveniently located near the high speed railway stations, local shops, restaurants, parks, and schools, this home truly has it all. Don't miss your chance to own a piece of paradise in the heart of Folkestone's West End. Call sole agent Burnap + Abel and schedule your showing today.



**Entrance Hall**

**Lounge/Kitchen/Dining Room**

34' 3" x 26' 6" (10.44m x 8.08m)

**Sitting Room**

16' 11" x 11' 11" (5.16m x 3.63m)

**Study**

11' 5" x 7' 3" (3.48m x 2.21m)

**Utility Room**

10' 0" x 7' 7" (3.05m x 2.31m)

**W.C**

**First Floor Landing**

**Bedroom Two**

14' 6" x 12' 11" (4.42m x 3.94m)

**Dressing Room**

**En-Suite**

**Bedroom Three**

20' 4" x 10' 9" (6.20m x 3.28m)

**Bedroom Four**

14' 5" x 12' 7" (4.39m x 3.84m)

**Bathroom**

9' 10" x 9' 7" (3.00m x 2.92m)

**Master Suite**

21' 1" x 17' 5" (6.43m x 5.31m)

**En-Suite**

**Walk-in Wardrobe 1**

**Walk-in Wardrobe 2**

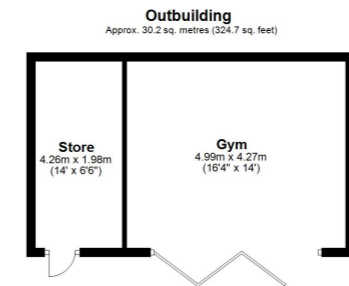
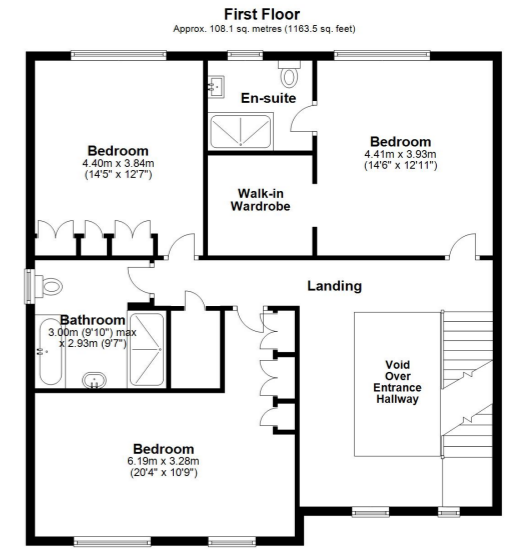
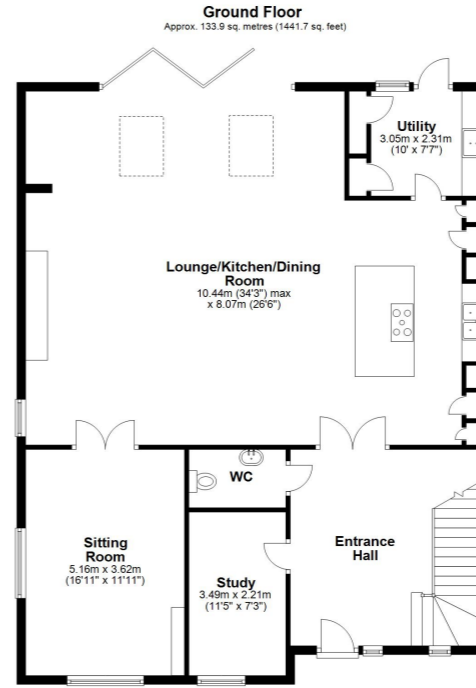
**Off Road Parking**

**Rear Garden**

**Outbuilding**

GYM - 16' 4" x 14' 0" (4.98m x 4.27m)

STORAGE - 14' 0" x 6' 6" (4.27m x 1.98m)



Whilst every attempt has been made to ensure the accuracy of the floor plan contained here, measurements of doors, windows, rooms and any other items are approximate and no responsibility is taken for any error, omission or mis-statement. This plan is for illustrative purposes only and should be used as such by any prospective purchaser. Plan produced using PlanUp.

