



## Robert Close, Potters Bar, Hertfordshire, EN6

**£715,000**

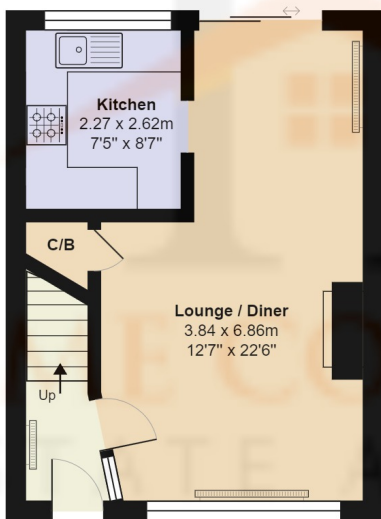
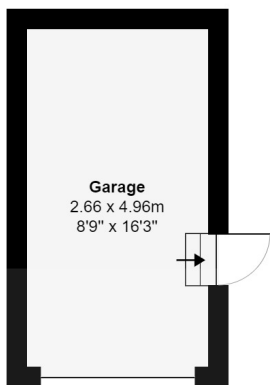
- DAME ALICE CATCHMENT AREA 2023
- OWN DRIVEWAY & GARAGE
- POTENTIAL FOR DOUBLE STOREY SIDE EXTENSION (STPP)
- POTENTIAL FOR REAR EXTENSION (STPP)
- THREE BEDROOM SEMI DETACHED
- SOUTH EASTERLY FACING GARDEN
- POTENTIAL FOR LOFT CONVERSION (STPP)

# Robert Close, Potters Bar, Hertfordshire, . EN6

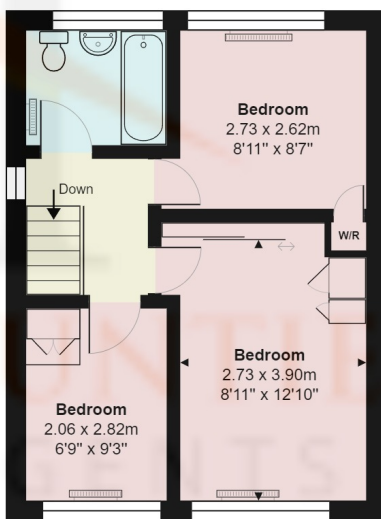
## £715,000 Freehold

Situated well within the New Dame Alice Owens School catchment under 300m is this delightful Three Bedroom Semi-Detached home. The property is set back from the road and benefits from off street parking and own driveway, offering potential for a double storey side and rear extension ( stpp ) Internally the home consists of open plan lounge diner, separate kitchen on the ground floor and on the first floor two double bedrooms and a single bedroom plus family bathroom.

The South Easterly facing garden is larger than the homes on the opposite side of the road and benefits from a garage, patio to rear and tiered lawn.



**Ground Floor**  
Area: 34.1 m<sup>2</sup> ... 368 ft<sup>2</sup>



**First Floor**  
Area: 34.1 m<sup>2</sup> ... 367 ft<sup>2</sup>

### Robert Close, Hertfordshire EN6

Total Area: 81.8 m<sup>2</sup> ... 881 ft<sup>2</sup>

All measurements are approximate and for display purposes only

