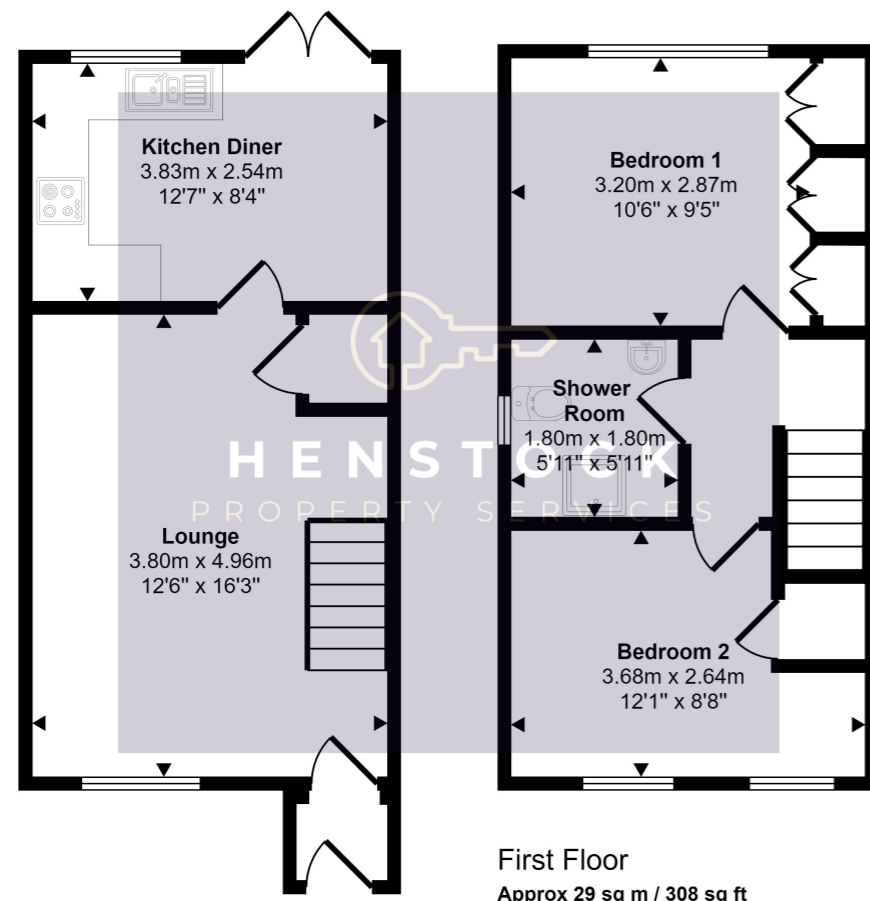


Approx Gross Internal Area
59 sq m / 634 sq ft



This floorplan is only for illustrative purposes and is not to scale. Measurements of rooms, doors, windows, and any items are approximate and no responsibility is taken for any error, omission or mis-statement. Icons of items such as bathroom suites are representations only and may not look like the real items. Made with Made Snappy 360.



HENSTOCK
PROPERTY SERVICES



27 Cinnabar Drive, Middleton, Manchester, Lancashire M24 5DG

- 2 BED MODERN SEMI DETACHED
- POPULAR LOCATION
- PLEASANT REAR GARDEN
- UPVC DOUBLED GLAZING
- GAS CENTRAL HEATING

£210,000



PROPERTY DESCRIPTION

Henstock Property Services are pleased to market this 2 bedroomed modern semi-detached family home. The living accommodation briefly comprises; entrance porch to hallway, front lounge, modern fitted kitchen / diner, 2 bedrooms and a shower room. The property also has the benefit of gas central heating, uPVC double glazed windows, off road parking and a pleasant rear garden. Well situated close to schools (primary & secondary), local shops/supermarkets, local amenities, leisure/fitness facilities, good transport services and motorway links M60/M62/M66

Entrance

Porch into hallway

Lounge

3.80m x 4.96m (12' 6" x 16' 3") views to front, open spindled staircase, central feature fireplace, marble surround, period style coal and flame effect electric fire, under stair storage, 2 double radiators.

Kitchen / Diner

3.83m x 2.54m (12' 7" x 8' 4") views to rear, modern maple woodgrain style units, black high gloss marble effect worktops, built in single electric oven, 4 ring gas hob, extractor, 1 1/2 bowl stainless steel sink, space for dining suite, patio doors to rear, double radiator.

Exterior

Rear: Indian stone paved paths and patio, second patio with lawn and planted borders, single shed.

Upper Floor

Bedroom 1

2.76m x 3.90m (9' 1" x 12' 10") L shaped into alcove, views to front, built in storage, single radiator.

Bedroom 2

3.39m x 2.86m (11' 1" x 9' 5") views to rear, modern built in white wardrobes with central mirrored draw pack, single radiator.

Shower Room

1.86m x 1.83m (6' 1" x 6' 0") double base walk in shower cubicle with wall mounted electric shower, vanity sink, close coupled w.c, marble effect boarded walls, spotlights, chrome heated towel rail.

Exterior

Front garden area - block paved path, lawn with flower beds, side block paved off road parking.

Rear garden - Indian stone paths and patio, 2nd patio with Pegoda, lawn and planted borders, single shed.

