



HILTON KING & LOCKE

SPECIALISTS IN PROPERTY



Windsor Avenue, Hillingdon, Uxbridge, Greater London. UB10 9AY.

OIEO £700,000 Freehold

Situated in one of the most popular roads on the Oak Farm Estate is this four bedroom, two reception, two bathroom extended semi, which is set on a good plot and presented in excellent order throughout. This property has over 1500 square ft of accommodation on offer.

Close by are an array of shops, amenities and schools, plus Hillingdon Station is nearby. There is also quick and easy access to the A40 and M25.

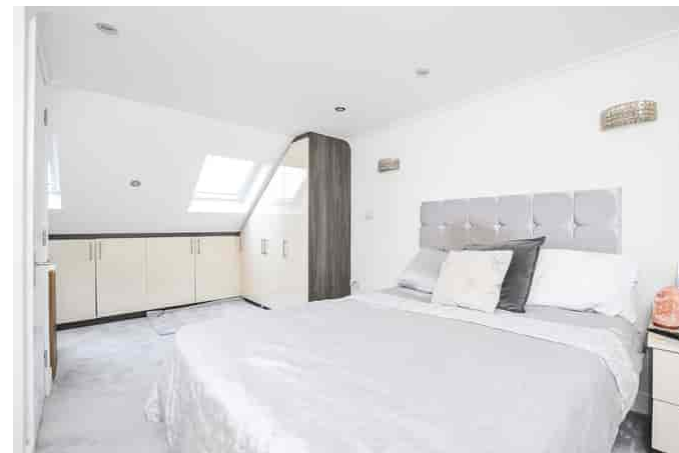
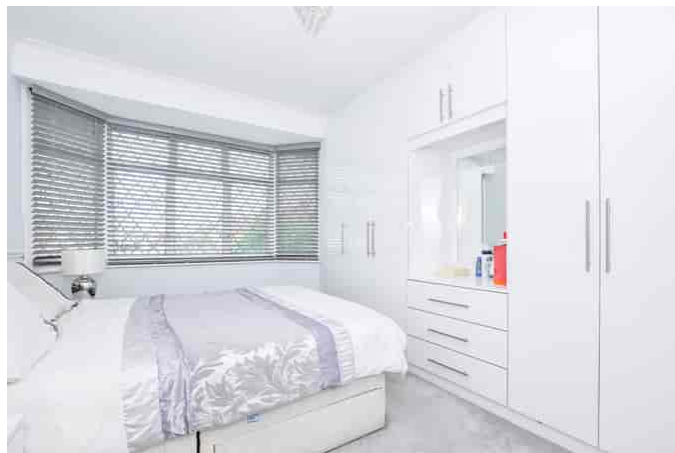
Accommodation on the ground floor includes a through sitting/dining room, 17' x 11'9 modern kitchen/breakfast room, utility room, a cloakroom, and a useful 16' x 6'7 office/playroom.

The first floor consists of three well proportioned bedrooms and a family bathroom, while the extended loft houses a 16'6 x 10'4 master suite with eaves storage and ensuite shower room.

Outside, there is ample off street parking at the front, plus an excellent sized rear garden that has a resin patio and large lawn.

Extra features include an air conditioning unit and underfloor heating to some of the ground floor.





Important Notice

Particulars: These particulars are not an offer or contract, nor part of one. You should not rely on statements by Hilton King & Locke Ltd in the particulars or by word of mouth or in writing as being factually accurate about the property, its condition or its value. Hilton King & Locke Ltd does not have any authority to make any representations about the property, and accordingly any information given is entirely without responsibility on the part of the agents, seller(s) or lessor(s).

Photographs etc: The photographs show only certain parts of the property as they appeared at the time they were taken. Areas, measurements and distances given are approximate only.

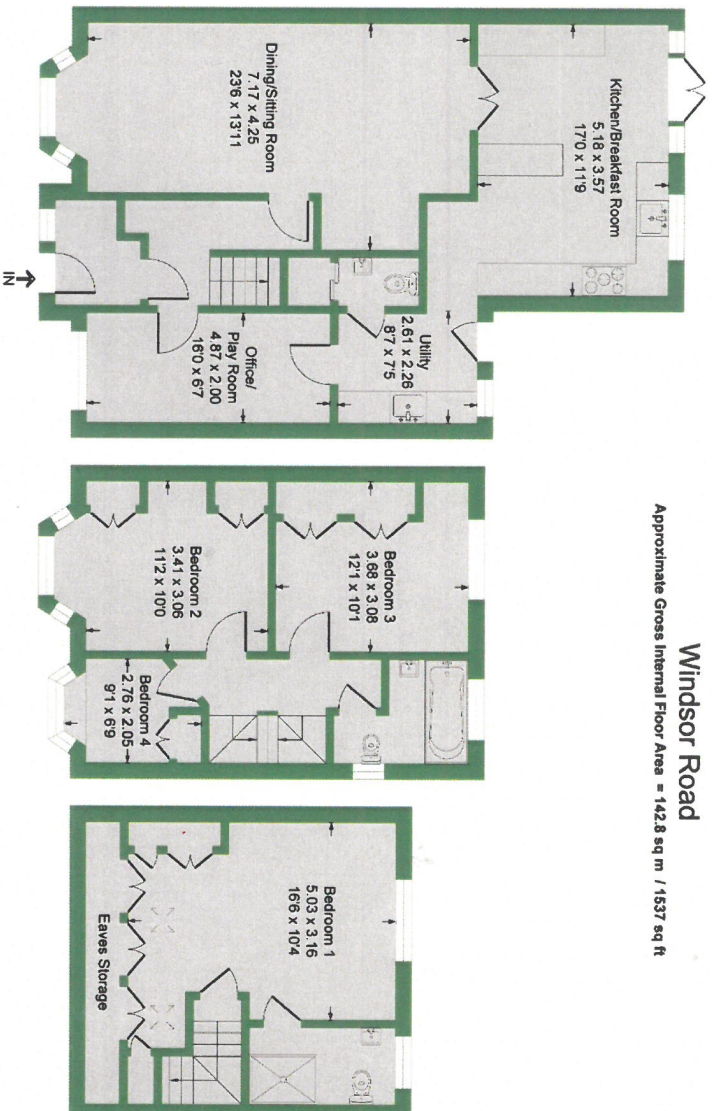


23 High Street
Iver Buckinghamshire SL0 9ND

Tel: 01753 650033
iver@hklhome.co.uk

Windsor Road

Approximate Gross Internal Floor Area = 142.8 sq m / 1537 sq ft



Ground Floor
Approximate Floor Area
826.58 sq.ft
(76.79 sq.m)

First Floor
Approximate Floor Area
424.58 sq.ft
(39.44 sq.m)

Second Floor
Approximate Floor Area
286.38 sq.ft
(26.60 sq.m)

Illustration for identification purposes only, measurements are approximate, not to scale.