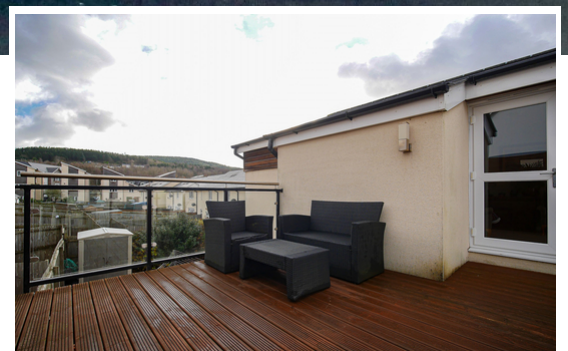




8 Naiad Road, Pentrechwyth, Swansea, SA1 7FB

Asking Price: £210,000

- Superb Link-Detached Home
- Two Double Bedrooms
- Open Plan Lounge & Fitted Kitchen
- Secure Off Road Parking Via Gated Access
- Spacious Terrace Feature
- Ground Floor Family Bathroom



Entrance Hall

Front door, airing cupboard, staircase to first floor, radiator, doors to:-

Bedroom One

3.48m x 3.32m (11' 5" x 10' 11") Front aspect glazed window, radiator

Bedroom Two

3.47m excluding wardrobe x 2.70m (11' 5" excluding wardrobe x 8' 10") Rear aspect glazed window, radiator, built-in mirror wardrobe

Bathroom

Three piece suite comprising of panelled enclosed bath with electric shower over, WC, pedestal wash basin, heated towel rail, extractor fan

First Floor**Fitted Kitchen/Lounge Area**

8.32m x 3.49m (27' 4" x 11' 5") Window and door to the front leading to a Juliet balcony, window and door to the side leading to terrace, radiator, a range of matching wall and base units, roll edged work surfaces with splashback, inset sink with single drainer, integrated gas hob, electric oven, cooker hood, dishwasher and fridge freezer. A wall mounted boiler and storage cupboard

Terrace

A decked terrace with glass retainers to the front and rear

Outside

Retaining wall and bi-folding gates leading to driveway, a lawn, a range of flower and shrub borders and secure panel fencing

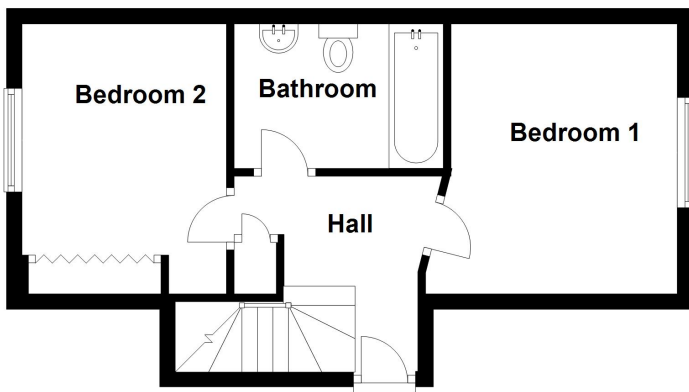
Tenure

We believe the property to be Leasehold

Disclaimer

Whilst these particulars are believed to be accurate, they are set for guidance only. Fresh have not tested any fixtures, fittings or services and cannot confirm that they are in working order or fit for purpose. Any floor plan provided is intended as a general guide to the layout of the accommodation and is not drawn to scale. We cannot confirm the tenure of the property is accurate and advise all buyers to obtain verification from their solicitor or surveyor. We strongly recommend that all the information which we provide about the property is verified by yourself or your advisers



Ground Floor**First Floor**