



Asking Price

£179,950

Leasehold

ASHLEY COURT, ASHLEY ROAD, POOLE BH14 9BZ



2



1



1



1



0

- ◆ **FIRST FLOOR APARTMENT**
- ◆ **PURPOSE BUILT**
- ◆ **TWO DOUBLE BEDROOMS**
- ◆ **NO FORWARD CHAIN**

A purpose built, two bedroom, first floor apartment benefiting from gas fired heating, double glazing and off road parking being offered without a forward chain.

Property Description

Ashley Court was constructed in 2004 and comprises fourteen one and two bedroom apartments arranged over three storeys. This particular apartment is situated on the first floor and the accommodation comprises a living room, two double bedrooms, kitchen and family bathroom. The home has been double glazed throughout and offers gas fired heating, as well as an entry telecom system.

Gardens and Grounds

There is a communal bicycle store and off road parking spaces for residents which are available on a first come first served basis.

Extra Information:

Tenure: Leasehold

Length of Lease: 125 years from 25 December 2004

Service Charge Details: £1,479.21 per annum

Sinking Fund Charge: £375.00 per annum

Ground Rent: £75 per six months

Type of Letting permitted: Min Term of 6 months.

Location

Poole is renowned for its sandy beaches and vibrant town with places to eat, drink and shop. The train station is a short walk with frequent train services to London Waterloo, Bournemouth, Southampton, The New Forest, Winchester, and Weymouth. Poole bus station is also close by offering both frequent local and long distance services. The area is also served by Bournemouth and Southampton airports and Poole's Cross Channel Ferry services. Poole Quay is at the end of Poole High Street with its numerous restaurants, bars and ferries to Brownsea Island. The Jurassic Coast to the west and the New Forest to the east are two of the most beautiful areas of the U.K. The area benefits from numerous leisure facilities including wind surfing, sailing, swimming and golf. There are miles of award winning sandy beaches, including the famous Sandbanks beach, which is less than five miles away.



Size: 480 sq ft (44.6 sq m)

Heating: Gas fired (combi) serviced annually

Glazing: Double glazed

Parking: Casual Off Road

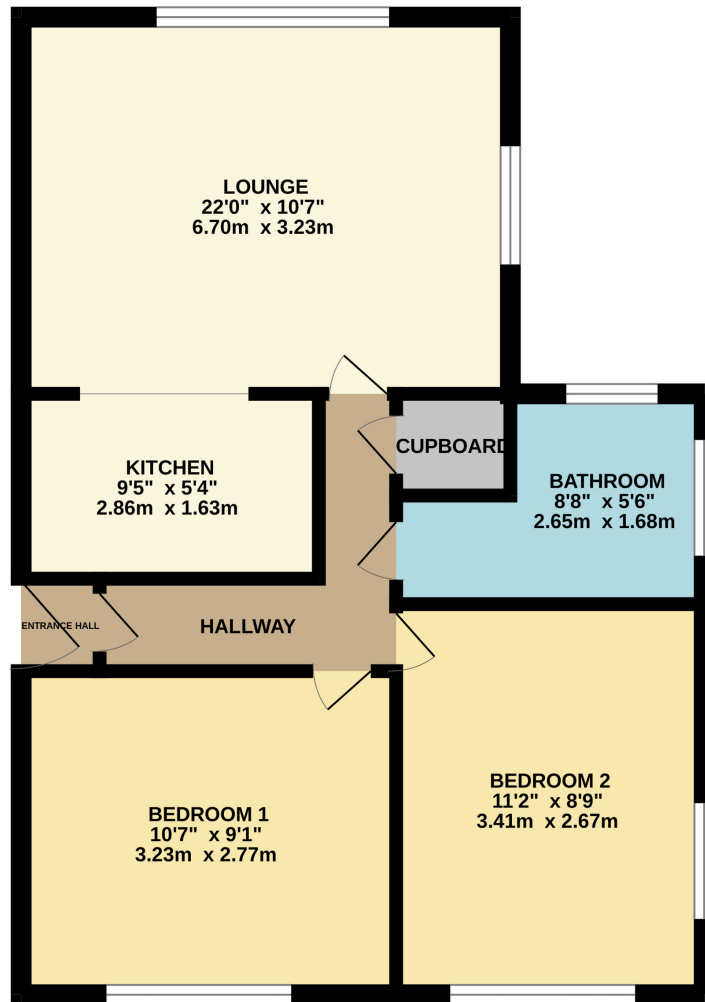
Garden: N/A

Main Services: Electric, water, gas, drains, telephone

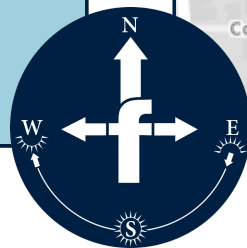
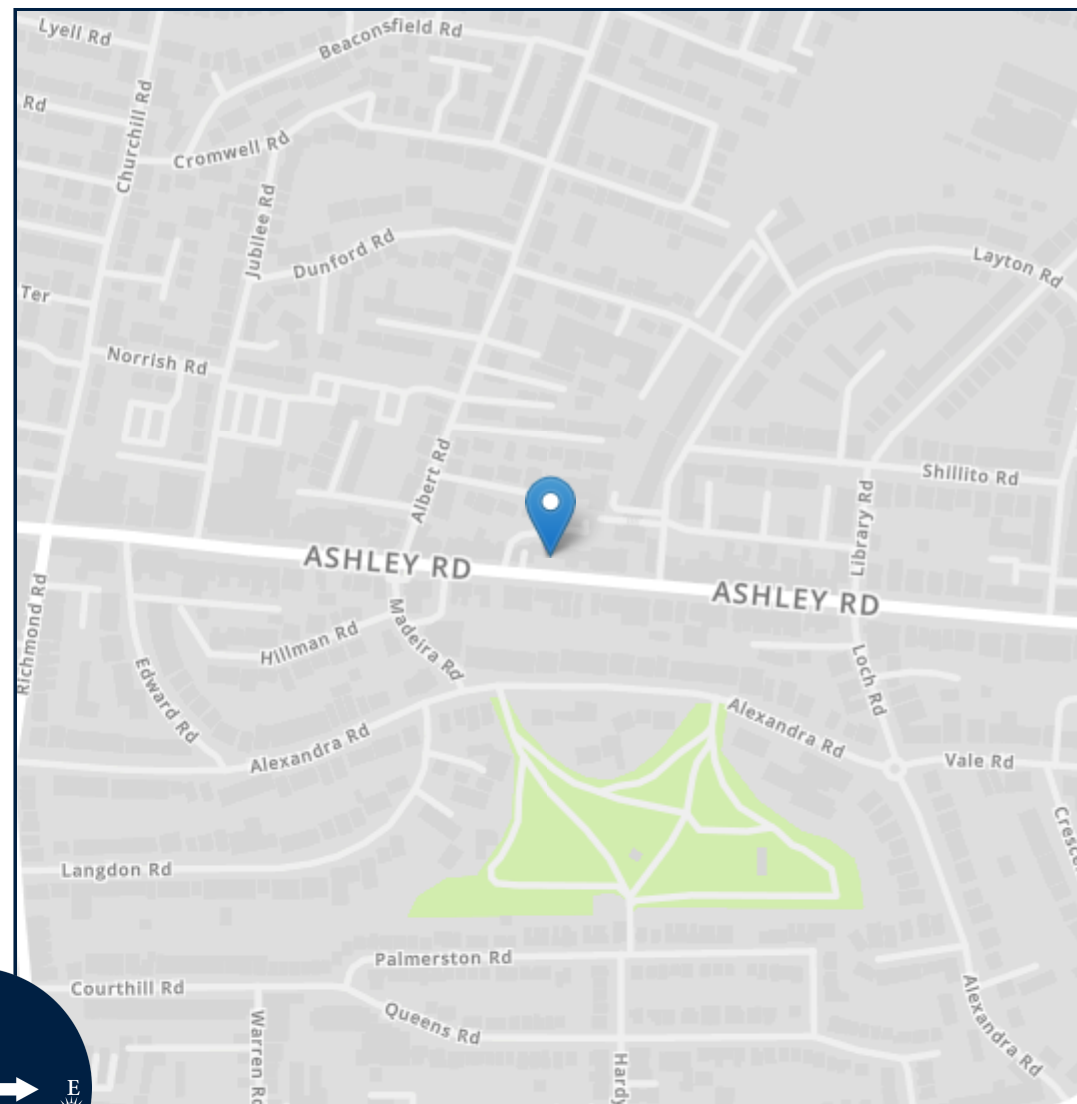
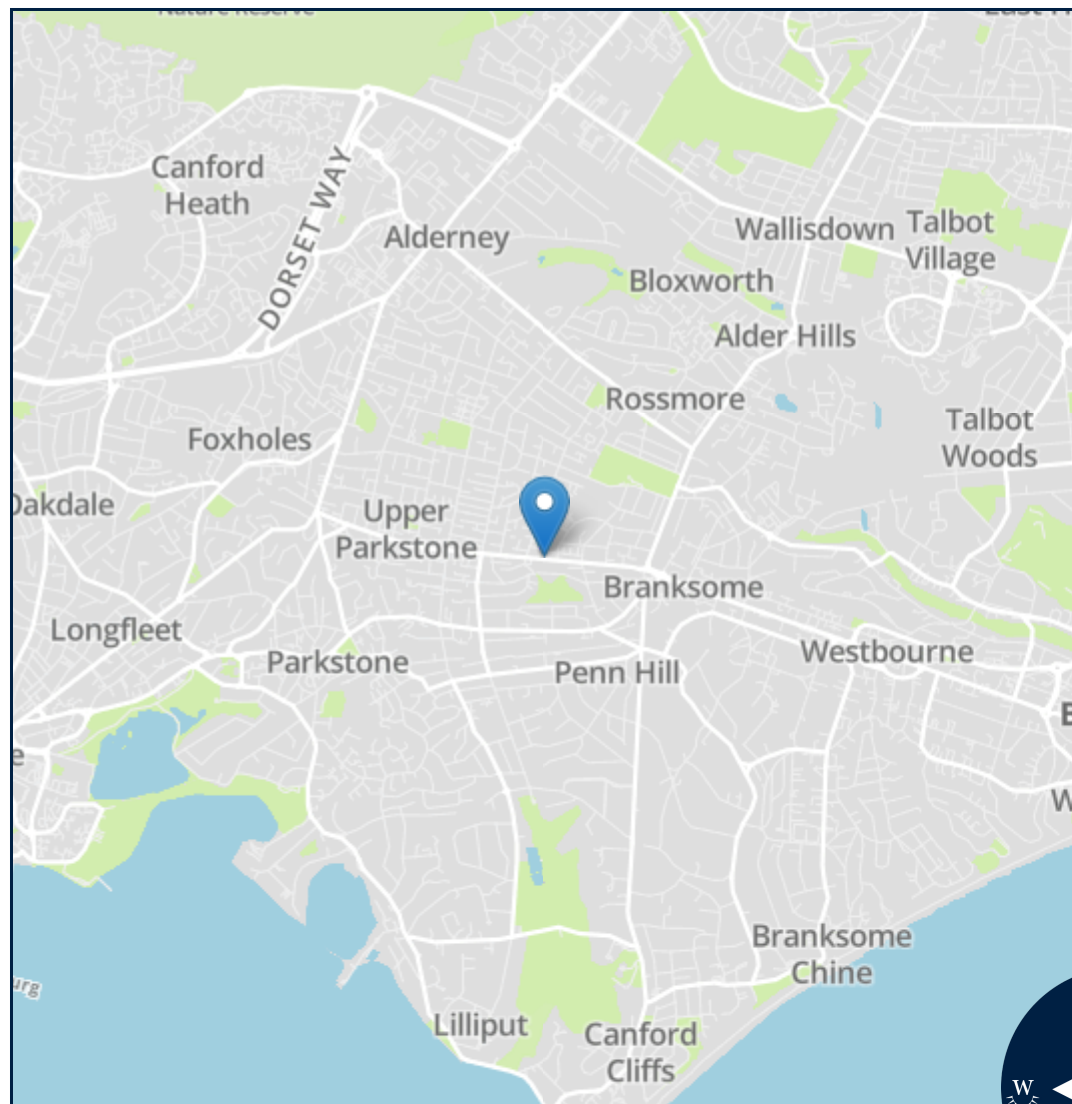
Local Authority: BCP Council

Council Tax Band: B

GROUND FLOOR
480 sq.ft. (44.6 sq.m.) approx.



TOTAL FLOOR AREA : 480 sq.ft. (44.6 sq.m.) approx.
Measurements are approximate. Not to scale. Illustrative purposes only
Made with Metropix ©2024



Important notice: Fisks Estate Agents, their clients and any joint agents give notice that 1: They are not authorised to make or give any representations or warranties in relation to the property either here or elsewhere, either on their own behalf or on behalf of their client or otherwise. They assume no responsibility for any statement that may be made in these particulars. These particulars do not form part of any offer or contract and must not be relied upon as statements or representations of fact. 2: Any areas, measurements or distances are approximate. The text, photographs and plans are for guidance only and are not necessarily comprehensive. It should not be assumed that the property has all necessary planning, building regulation or other consents and Fisks Estate Agents have not tested any services, equipment or facilities. Purchasers must satisfy themselves by inspection or otherwise.



12 East Street, Wimborne,
Dorset, BH21 1DS
www.fisksestateagents.co.uk
01202 880000