



4 Charmille Court Warren Road, Ashford, Surrey, TW15 1SD

STUNNING 2 BEDROOM, 2 BATH/SHOWER ROOM APARTMENT SITUATED IN SOUGHT AFTER MODERN DEVELOPMENT IDEALLY LOCATED FOR ASHFORD TOWN CENTRE & LOCAL MOTORWAY NETWORKS. The property benefits from a spacious lounge/diner, modern fitted kitchen, two double bedrooms (en-suite to Bed 1), further luxury bathroom suite, allocated parking bay and share of freehold. Viewings Highly Recommended!

ROOM DESCRIPTIONS

Communal Entrance

With security-entry door & stairs to first floor.

First Floor

Entrance Hall

Light point, entry-phone, radiator, built-in storage cupboard.

Lounge/Diner

Front aspect UPVC double glazed windows, light and power points, two radiators, TV point.



Kitchen

Side aspect UPVC double glazed window, range of modern fitted units at eye and base level, roll edged worktops, breakfast bar, 1 1/2 bowl sink drainer unit, built-in oven and hob with extractor over, integrated dishwasher and wine fridge. Space for fridge/freezer and washing machine. Partly tiled walls, tiled floor, radiator.



Bedroom 1

Front aspect UPVC double glazed windows, light and power points, radiator, built-in wardrobes.



ROOM DESCRIPTIONS

En-suite Shower Room

Side aspect UPVC double glazed window, low level W.C, wash hand basin inset to cabinet, built-in shower, tiled walls, recessed downlighters, extractor, heated towel rail.



Outside

1 Allocated Parking Bay



Bedroom 2

Front aspect UPVC double glazed window, light and power points, radiator, built-in wardrobe.



Bathroom

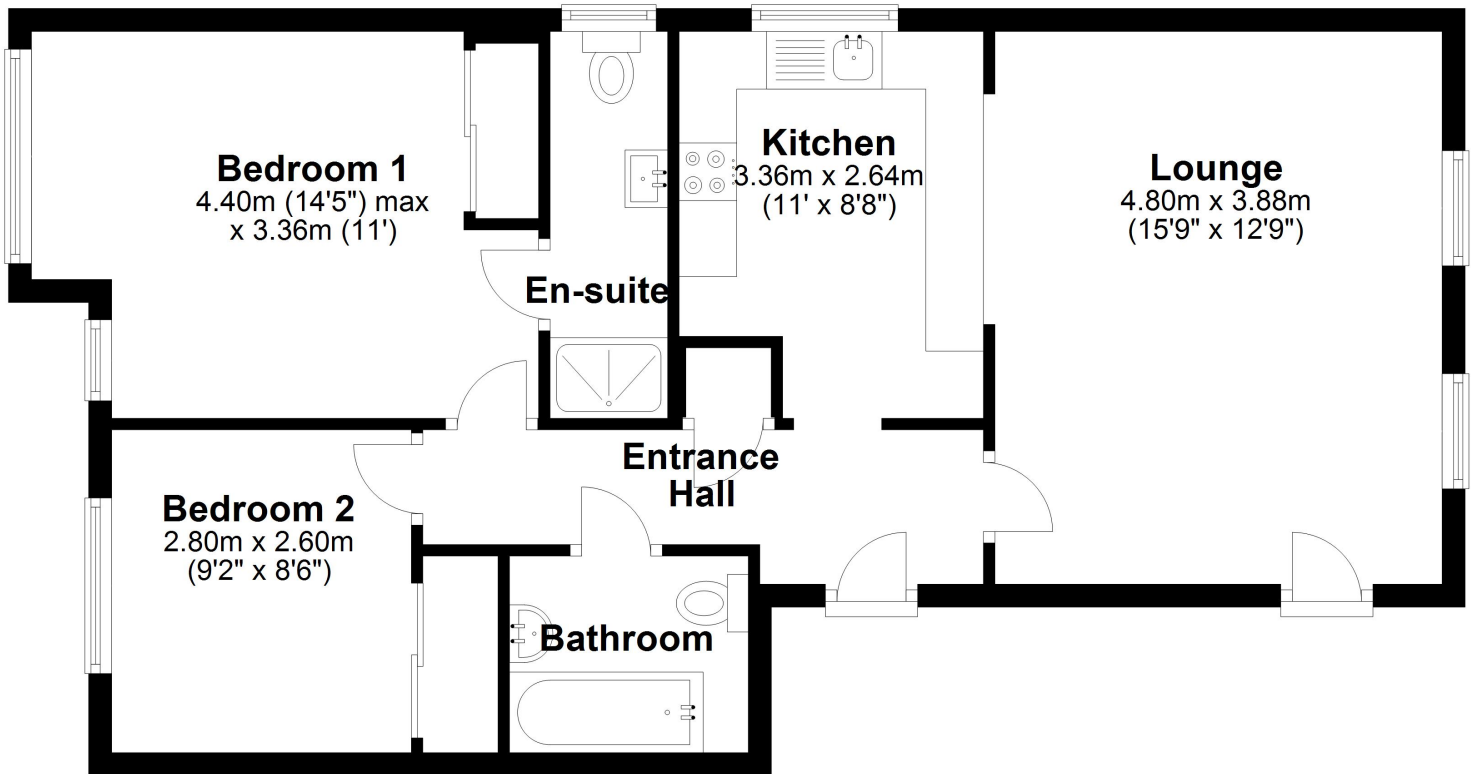


Panel enclosed bath, low level W.C, wash hand basin inset to cabinet, partly tiled walls, tiled floor, heated towel rail, recessed downlighters, extractor.

FLOORPLAN

First Floor

Approx. 65.0 sq. metres (699.6 sq. feet)



Total area: approx. 65.0 sq. metres (699.6 sq. feet)