



**132 Rhyddings Terrace, Brynmill, Swansea,
SA2 0DR**

Asking Price: £260,000

- Five Bedroom HMO Property
- Fitted Kitchen & Communal Area
- Upstairs Shower Room With Separate WC
- Enclosed & Secure Garden To The Rear
- Great Investment Location
- No Onward Chain



Entrance Hall

Stairs to first floor landing, radiator, doors to:-

Kitchen/Living Room

6.18m x 3.03m (20' 3" x 9' 11") Dual aspect glazed windows, door to garden, range of eye and base level cupboards and drawers, inset stainless steel single drainer sink unit with mixer tap, inset four ring gas hobs with extractor hood over and oven under, space and plumbing for washing machine, space for upright fridge freezer, radiator

Bedroom One

3.79m x 3.61m (12' 5" x 11' 10") Front aspect glazed bay window, radiator

Bedroom Two

3.39m x 2.88m (11' 1" x 9' 5") Rear aspect glazed window, radiator

First Floor Landing

Doors to:-

Bedroom Three

4.69m x 3.50m (15' 5" x 11' 6") Two front aspect glaze windows, radiator

Bedroom Four

3.46m x 2.95m (11' 4" x 9' 8") Rear aspect glazed window, radiator

Bedroom Five

3.07m x 2.81m (10' 1" x 9' 3") Rear aspect glazed window, radiator

Shower Room

Side aspect glazed window, three piece suite comprising shower cubicle, WC, wash hand basin, heater towel rail

WC

Two piece suite comprising WC, washe hand basin, heated towel rail, cupboard housing wall mounted gas fired boiler

Garden

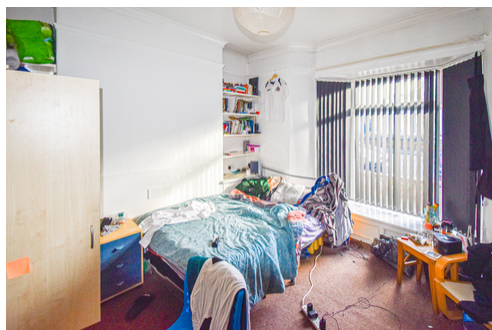
Secure and enclosed rear garden with hard standing and area laid to lawn

Tenure

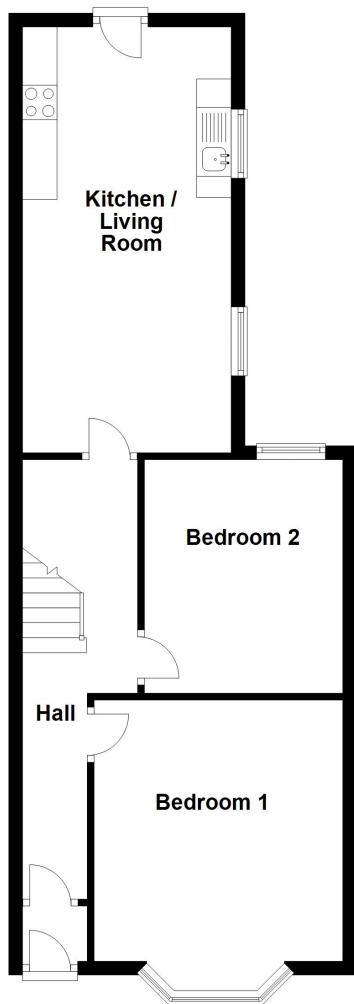
We believe the property to be Freehold

Disclaimer

Whilst these particulars are believed to be accurate, they are set for guidance only. Fresh have not tested any fixtures, fittings or services and cannot confirm that they are in working order or fit for purpose. Any floor plan provided is intended as a general guide to the layout of the accommodation and is not drawn to scale. We cannot confirm the tenure of the property is accurate and advise all buyers to obtain verification from their solicitor or surveyor. We strongly recommend that all the information which we provide about the property is verified by yourself or your advisers



Ground Floor



First Floor

