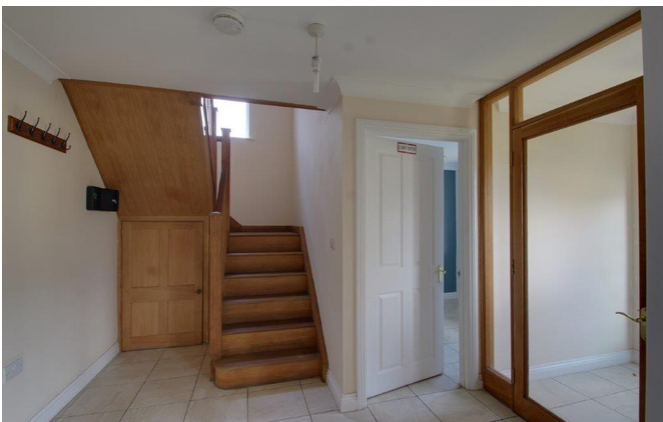


# Kyte Road

Shepton Mallet, BA4 5PJ

COOPER  
AND  
TANNER



£450,000

 4  2  2 EPC TBC

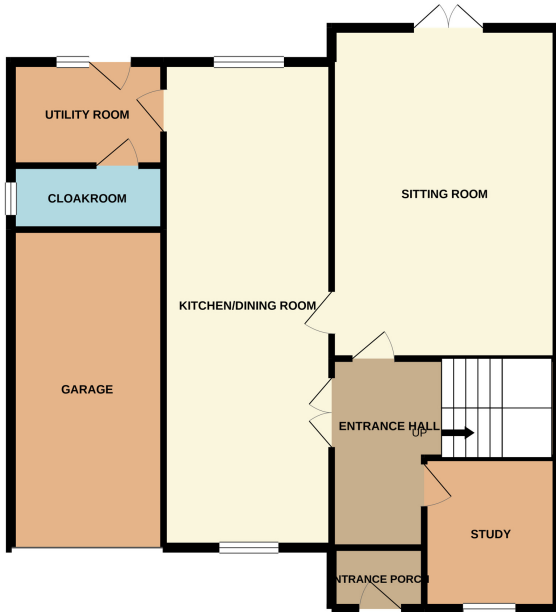
---

## Description

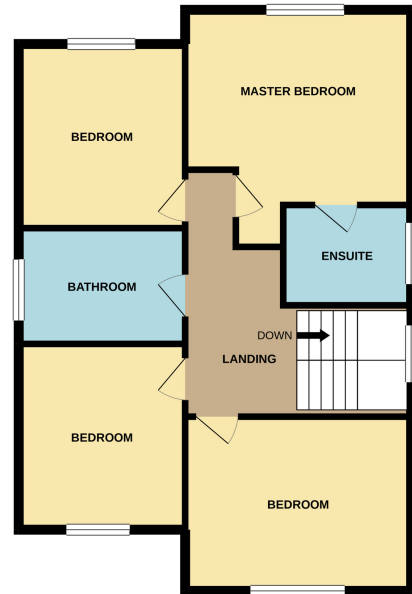
A detached modern four bedroom home offering deceptively spacious accommodation situated on a very popular road within walking distance of the town and Collett park. The property benefits from family sized kitchen/diner, large sitting room with open fireplace, study, utility, master bedroom with ensuite bathroom, garage, gardens and driveway parking. Offered with no onward chain.



GROUND FLOOR  
1017 sq.ft. (94.5 sq.m.) approx.



1ST FLOOR  
752 sq.ft. (69.8 sq.m.) approx.



TOTAL FLOOR AREA: 1768 sq.ft. (164.3 sq.m.) approx.

Whilst every attempt has been made to ensure the accuracy of the floorplan contained here, measurements of doors, windows, rooms and any other items are approximate and no responsibility is taken for any error, omission or mis-statement. This plan is for illustrative purposes only and should be used as such by any prospective purchaser. The services, systems and appliances shown have not been tested and no guarantee as to their operability or efficiency can be given.  
Made with Metropix ©2021



## Features

- Main bedroom with an en suite bathroom
- Family sized kitchen/dining room
- Study
- Utility
- Enclosed rear garden
- Driveway and garage
- Popular location

## Local Information

- Tenure
- EPC Rating TBC

### SHEPTON MALLET OFFICE

Telephone 01749 372200

32, High Street, Shepton Mallet, Somerset BA4 5AS

[sheptonmallet@cooperandtanner.co.uk](mailto:sheptonmallet@cooperandtanner.co.uk)

**COOPER  
AND  
TANNER**

Important Notice: These particulars are set out as a general outline only for the guidance of intended purchasers and do not constitute, nor constitute part of, an offer or contract. All descriptions, dimensions, reference to condition and necessary permissions for use and occupation, warranties and other details are given without responsibility and any intending purchasers should not rely on the matters stated or representations of fact but must satisfy themselves by inspection or otherwise as to the correctness of each of them.

