





A luxuriously appointed, three storey, three bedroom town house with new kitchen and bathrooms, large conservatory and converted garage.

- Fully Modernised
- New Kitchen & Bathrooms
- Large Conservatory
- Converted Garage
- Three Double Bedrooms
- Low Maintenance Garden
- Parking for Two Cars

Description

A luxuriously appointed, three storey, three bedroom town house on popular development. The property has been fully modernised and updated by the current owners, who have added a large conservatory to the rear of the house, which sits open plan to the living kitchen, they have also converted the integral garage to a further reception room, which could of course be used as a fourth bedroom. The kitchen and both bathrooms have been replaced with modern fittings and the house is offered in excellent decorative condition throughout. Externally there is a low maintenance rear garden with patio area and artificial grass and there is parking for at least two cars in front of the house. This property would be a great choice for someone looking for a 'move in luxury home'



Location

The property is situated on the fringe of the popular Kingsmead development and next door to Sir John Deane's Six Form College. Local amenities are well catered for with a good selection of shops and other facilities available at the Kingsmead local centre, which is also home to the very popular Kingfisher Public House. Two railways serve the area with the West Coast Main Line service running through Hartford, enabling access to London within two hours. Trains to Manchester and Chester run from Greenbank or Northwich station. The nearby A556 easily facilitates access to the region's major road network with Manchester and Liverpool airports both within 20 miles. Above all, where Northwich really excels is its range of excellent schools. Kingsmead has its own very well regarded and Ofsted rated 'Outstanding' primary school and The County High School Leftwich, which is also rated Outstanding by Ofsted is within walking distance. Nearby Northwich caters for a more comprehensive range of amenities, including leading supermarkets with Waitrose, Sainsbury's and Tesco all represented.

Tenure

FREEHOLD

EPC Rating:

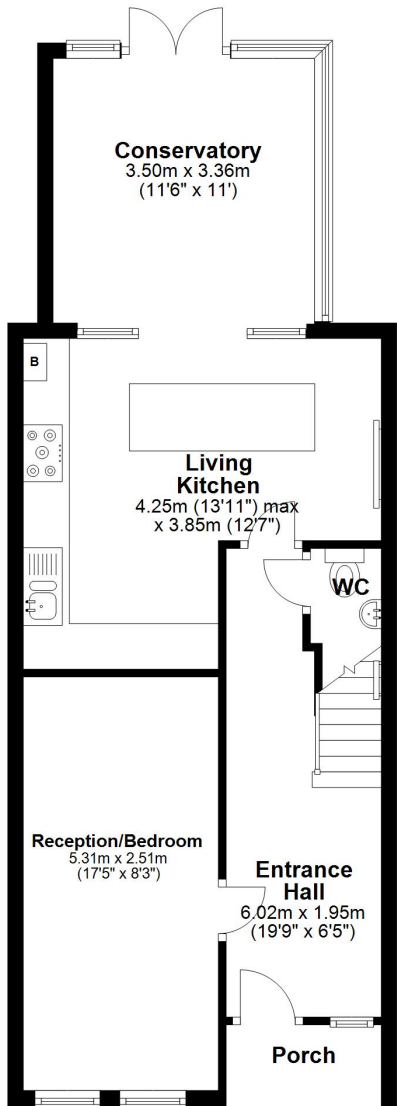
Important Notes

Type Here



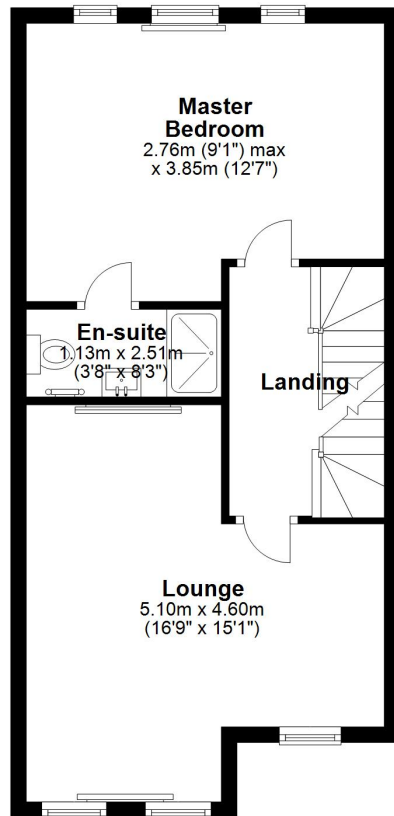
Ground Floor

Approx. 51.2 sq. metres (551.3 sq. feet)



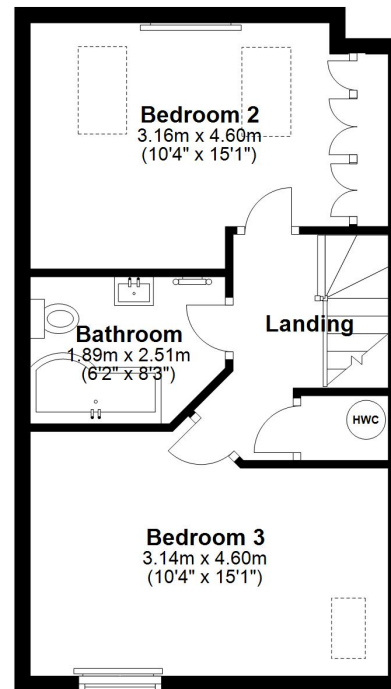
First Floor

Approx. 44.0 sq. metres (473.1 sq. feet)



Second Floor

Approx. 38.3 sq. metres (411.9 sq. feet)



Total area: approx. 133.4 sq. metres (1436.2 sq. feet)

