



Flat 6, 46 Silverstone House, Newport Road, Woolstone, Milton Keynes, Buckinghamshire, MK15 0AA

O.I.E.O £220,000 £220,000

Leasehold

- Two toilets
- One bed first floor apartment
- Open plan lounge/kitchen/diner
- Double bedroom with en-suite
- Desirable and highly sought-after location
- Brilliant investment or first time purchase
- EPC Rating





One Bedroom first floor apartment located in the highly desirable location of Woolstone. The property comprises of entrance hall, WC, open plan lounge/kitchen/diner and double bedroom with en-suite. The specification is of a high standard including fully integrated kitchen, granite work tops with integrated appliances and quality flooring throughout.

£1,300 A YEAR SERVICE CHARGE £250 A YEAR GROUND RENT

Silverstone House is a stones throw away from Ouzel Valley Park, a grassy rural land that runs along side the River Ouzel with walking/cycling paths that lead to Willen Lake. Milton Keynes Train Station is approx 3.1 miles away as well as the Centre:MK which boast a variety of restaurants, shops and bars.

Nearby leisure facilities include Willen Lake (1 mile) and Woburn Golf Club (7 miles). Shopping facilities include the Kingston Centre (2 miles) and Central Milton Keynes (3 miles). Milton Keynes Central railway station - with services to Euston taking 36 minutes - is 4 miles away and M1 junction 14 is 3 miles. The property is in the Oakgrove school catchment area and there are GP surgeries in Middleton (2.5 miles) and Walnut Tree (3 miles).

Living

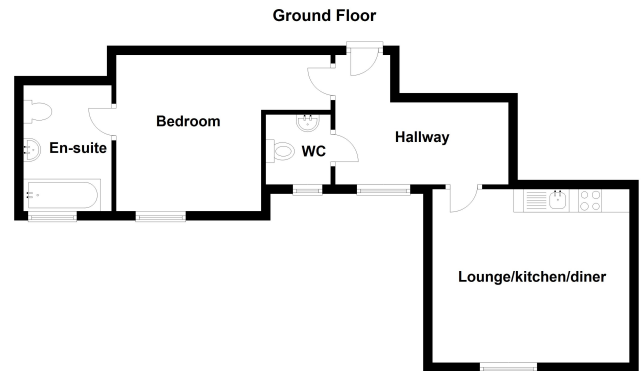
4.40m x 4.80m (14' 5" x 15' 9")

Bedroom

4.38m x 2.57m (14' 4" x 8' 5")

Disclaimer

Whilst we have endeavoured to prepare our sales particulars accurately none of the services, appliances or equipment have been tested. A buyer should satisfy themselves on such matters prior to purchase. Any measurements or distances mentioned in these particulars are for guide reference only. If such particulars are fundamental to a purchase, buyers should rely on their own enquiries. All enquiries should be directed to Elevation Estate Agents in the first instance.



Floor plans are for layout purposes only. Measurements are approximate and subject to inaccuracies. Plan produced using PlanUp.