

FOR
SALE



The Grove, Epsom, Surrey KT17 4JW



OVER 60'S RETIREMENT APARTMENT £135,000 Leasehold

252, Chessington Road, Ewell, Epsom, KT19 9XF 0208 394 2555 sales@jacksonnoon.com

PROPERTY SUMMARY

*** REFURBISHED *** JACKSON NOON ESTATE AGENTS are pleased to offer this MODERN ONE DOUBLE BEDROOM RETIREMENT APARTMENT with lounge, MODERN KITCHEN AND SHOWER ROOM, double glazing, COMMUNAL GARDENS AND PARKING, RESIDENTS LOUNGE all located in a QUIET CUL DE SAC and a LEVEL WALK TO EPSOM TOWN CENTRE.....NO CHAIN.....CALL NOW TO VIEW.

POINTS OF INTEREST

- *One Bedroom Retirement Flat*
- *Modern Kitchen & Shower Room*
- *Double Glazing*
- *Communal Gardens & Parking*
- *Residents Lounge & Laundry Room*
- *No Chain*



ROOM DESCRIPTIONS

Front Door to

Communal Entrance

Stairs and lift to first floor, access to Residents Lounge

Entrance Hall

Cloaks hanging space

Lounge

14' 3" x 13' 11" (4.34m x 4.24m) Airing cupboard, double glazed window

Modern Kitchen

7' 3" x 6' 1" (2.21m x 1.85m) Single drainer stainless steel sink unit inset in roll top work surface, range of cupboards and units, space for fridge and freezer, fitted oven and hob, extractor

Bedroom 1

17' 6" x 8' 8" (5.33m x 2.64m) Heater, fitted wardrobes, double glazed window

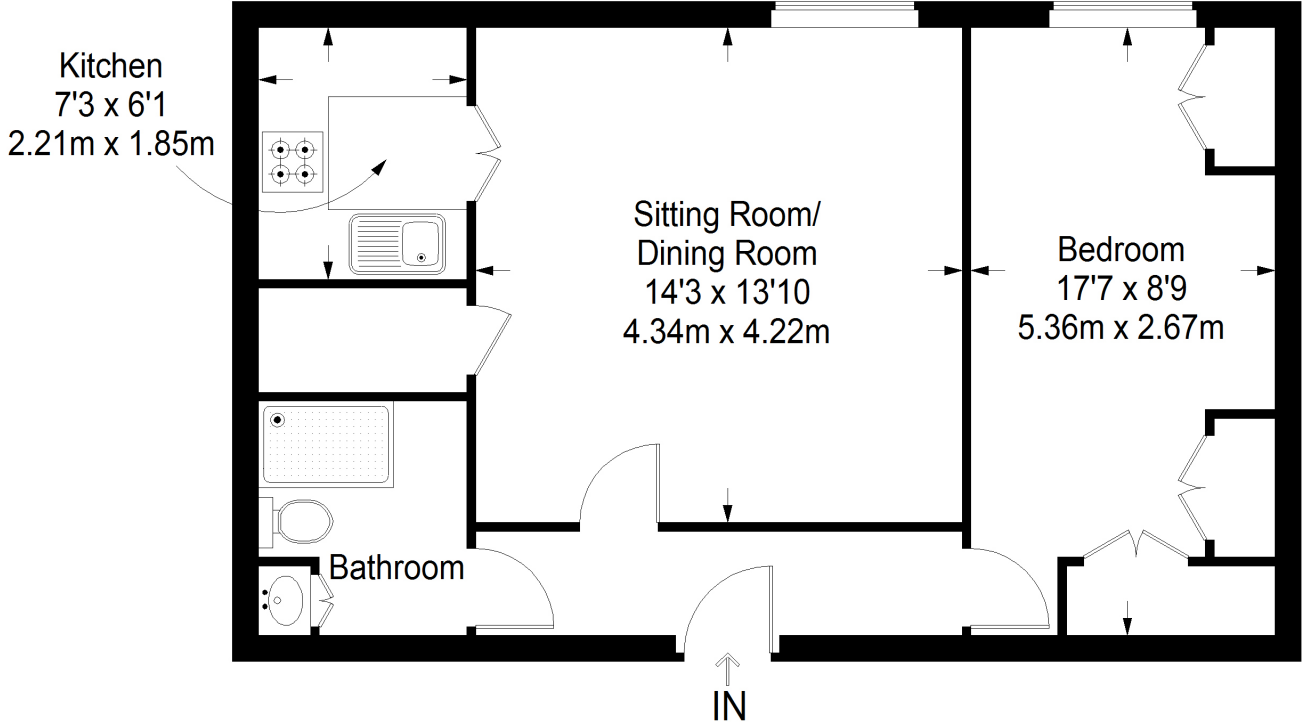
Modern Shower Room

Comprising shower cubicle, fitted shower, low level wc, wash hand basin, tiled walls

Outside

Communal Gardens & Allocated Parking

Badgers Court



First Floor = 513 sq ft

Approximate Gross Internal Area
FIRST FLOOR = 513 sq ft / 47.66 sq m
Total = 513 sq ft / 47.66 sq m



This plan is for layout guidance only. Not drawn to scale unless stated. Windows and door openings are approximate. Whilst every care is taken in the preparation of this plan, please check all dimensions, shapes and compass bearings before making any decisions reliant upon them. (ID357409)